

NORTHWEST COMMERCIAL CENTER THIRD

KNOW ALL PERSONS BY THESE PRESENTS: That Northwest Investments of La Crosse, LLC, a Wisconsin limited liability company, owner of the following described property:

Outlot G, NORTHWEST COMMERCIAL CENTER, Rochester, Minnesota.

Containing 11.28 acres, more or less.

Has caused the same to be surveyed and platted as NORTHWEST COMMERCIAL CENTER THIRD.

In witness whereof, said Northwest Investments of La Crosse, LLC, a Wisconsin limited liability company, has caused these presents to be signed by its proper officer this 23rd day of MAY, 2014.

SIGNED: NORTHWEST INVESTMENTS OF LA CROSSE, LLC

Donald P. Zietlow
Donald P. Zietlow, Member

STATE OF WISCONSIN
COUNTY OF LA CROSSE

This instrument was acknowledged before me on MAY 23, 2014 by Donald P. Zietlow, Member of Northwest Investments of La Crosse, LLC, a Wisconsin limited liability company.

Janis Hue
Notary Public, Olmsted County, Minnesota
LA CROSSE WISCONSIN

Janis Hue
Notary Printed Name

My commission expires 10-27-17

SURVEYOR'S CERTIFICATE

I Mark E. Severson do hereby certify that this plat was prepared by me or under my direct supervision; that I am a duly Licensed Land Surveyor in the State of Minnesota; that this plat is a correct representation of the boundary survey; that all mathematical data and labels are correctly designated on this plat; that all monuments depicted on this plat have been, or will be correctly set within one year; that all water boundaries and wet lands, as defined in Minnesota Statutes, Section 505.01, Subd. 3, as of the date of this certificate are shown and labeled on this plat; and all public ways are shown and labeled on this plat.

Dated this 27 day of May, 2014.

Mark E. Severson
Mark E. Severson, Licensed Land Surveyor
Minnesota License No. 18887

STATE OF MINNESOTA
COUNTY OF OLMTSTED

The instrument was acknowledged before me on May 27, 2014 by Mark E. Severson.

Beverly E. Delisle
Notary Public, Olmsted County, Minnesota

Beverly E. Delisle
Notary Printed Name

My commission expires Jan. 31, 2015

COUNTY SURVEYOR

I hereby certify that in accordance with Minnesota Statutes, Section 505.021, Subd. 11, this plat has been reviewed and approved this 28 day of MAY, 2014.

Paul A. Thoreson
Olmsted County Surveyor

CITY APPROVAL

State of Minnesota
County of Olmsted
City of Rochester

I, Aaron S. Reeves, City Clerk, in and for the City of Rochester, do hereby certify that on the 5 day of May, 2014, the accompanying plat was duly approved by the Common Council of the City of Rochester. In testimony thereof I have hereunto signed my name and affixed the seal of said City of Rochester this 7 day of June, 2014.

Aaron S. Reeves
Aaron S. Reeves, City Clerk

PROPERTY RECORDS AND LICENSING

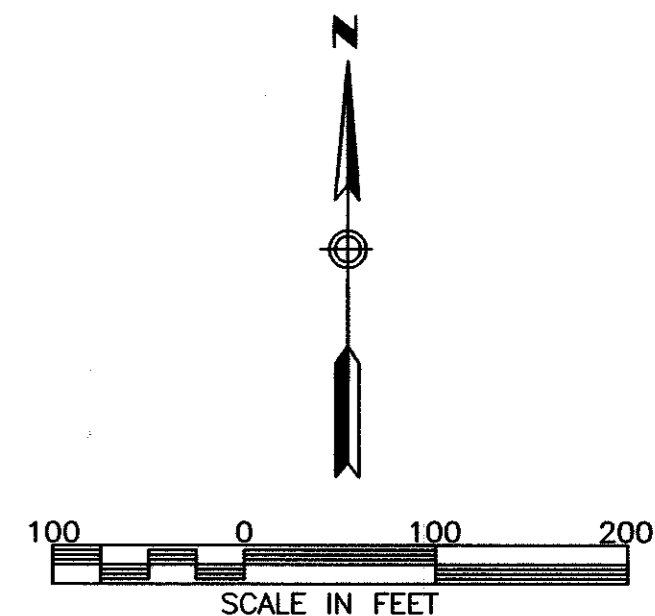
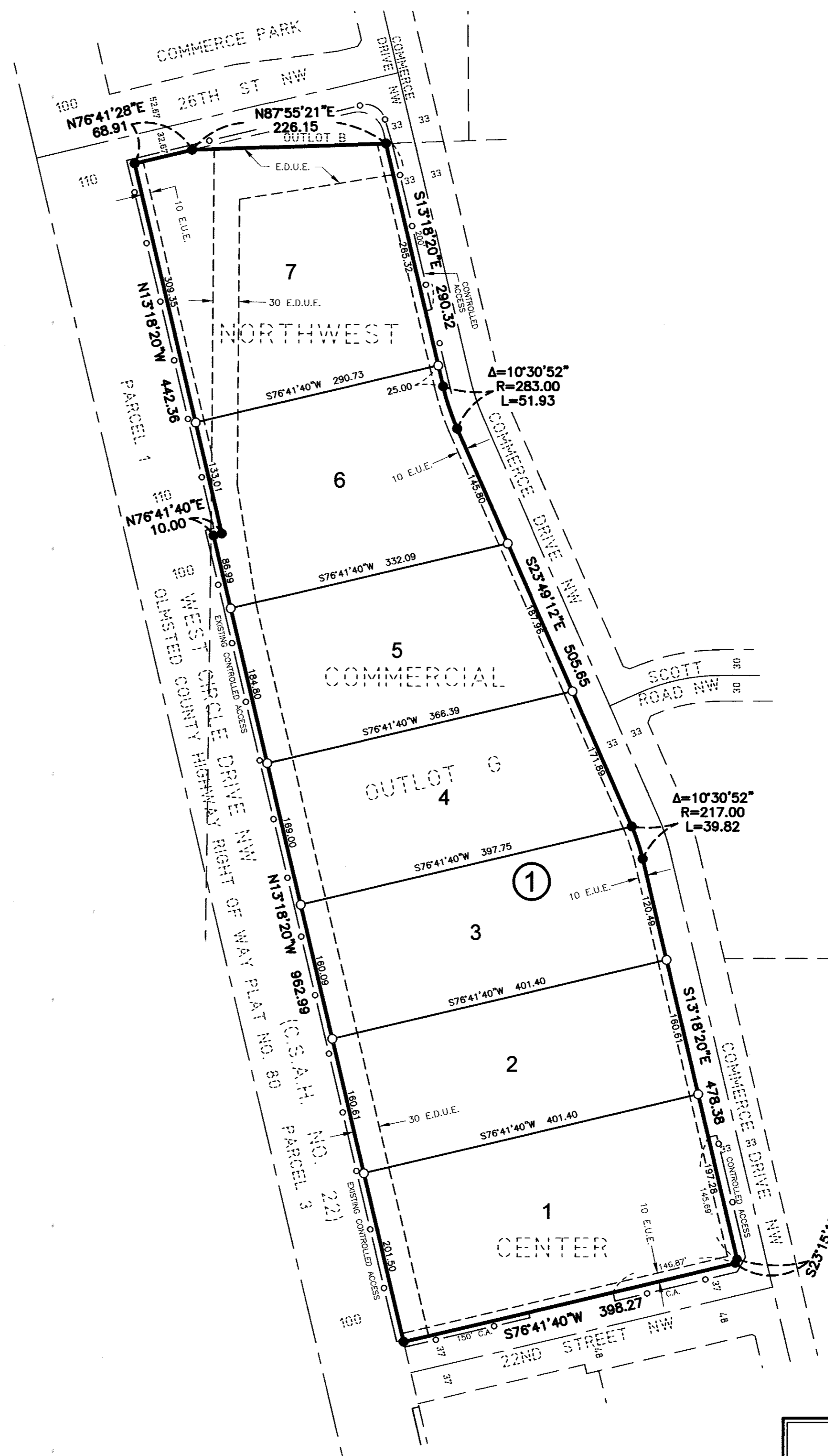
Taxes payable in the year 2014 on the land described herein have been paid, there are no delinquent taxes and transfer has been entered this 4th day of JUNE, 2014.

DOCUMENT NUMBER A-1347550

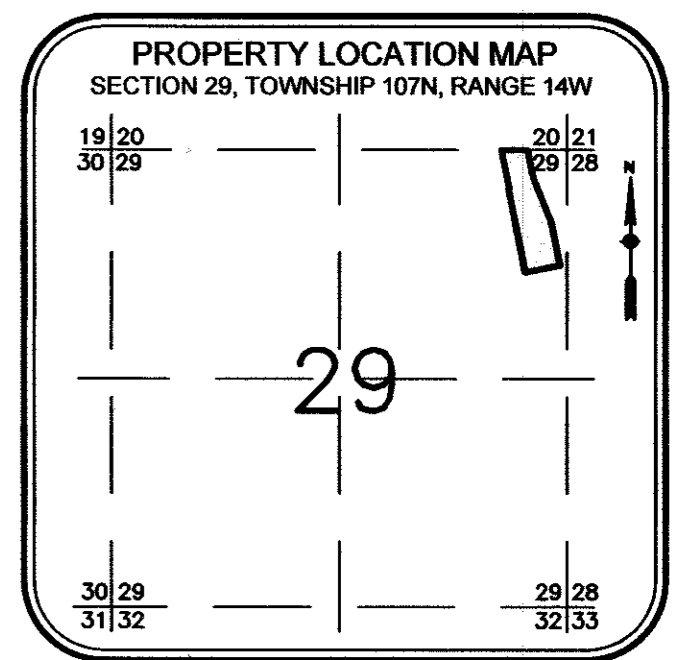
I hereby certify that this instrument was filed in the Office of Property Records and Licensing for the record on this 4th day of JUNE, 2014, at 4:1/2 o'clock P.M., and was duly recorded in the Olmsted County records.

W. Mark Krupski
Director of Property Records & Licensing

Wendy von Wald
Deputy



BASIS OF BEARING SYSTEM:
ALL BEARINGS ARE IN RELATIONSHIP WITH THE WEST LINE OF OUTLOT G, NORTHWEST COMMERCIAL CENTER, WHICH IS ASSUMED TO BE NORTH 13 DEGREES 18 MINUTES 20 SECONDS WEST.



NOTE:
ALL MONUMENTS SHOWN THUS: ○ ARE 5/8" I.D. CAPPED PIPES WITH LICENSE NO. 18887 WHICH WILL BE SET WITHIN 1 YEAR AFTER RECORDING OF THIS PLAT.
ALL MONUMENTS SHOWN THUS: ● ARE FOUND 5/8" PIPES UNLESS OTHERWISE NOTED.
E.D.U.E. = EXISTING DRAINAGE AND UTILITY EASEMENT
E.U.E. = EXISTING UTILITY EASEMENT
C.A. = CONTROLLED ACCESS
CONTROLLED ACCESS DEFINED:
INGRESS OR EGRESS TO, FROM, OR ACROSS THE ABUTTING ROADWAY IS RESTRICTED BY THE ROAD AUTHORITY PURSUANT TO MINNESOTA STATE STATUTE 160.08.

1280-A

McGhie & Betts
1648 Third Avenue S.E.
Rochester, MN 55904
Telephone: 507-289-3919
Fax: 507-289-7333
mbi@mcghiebetts.com

McGhie & Betts
WSB & Associates, Inc.