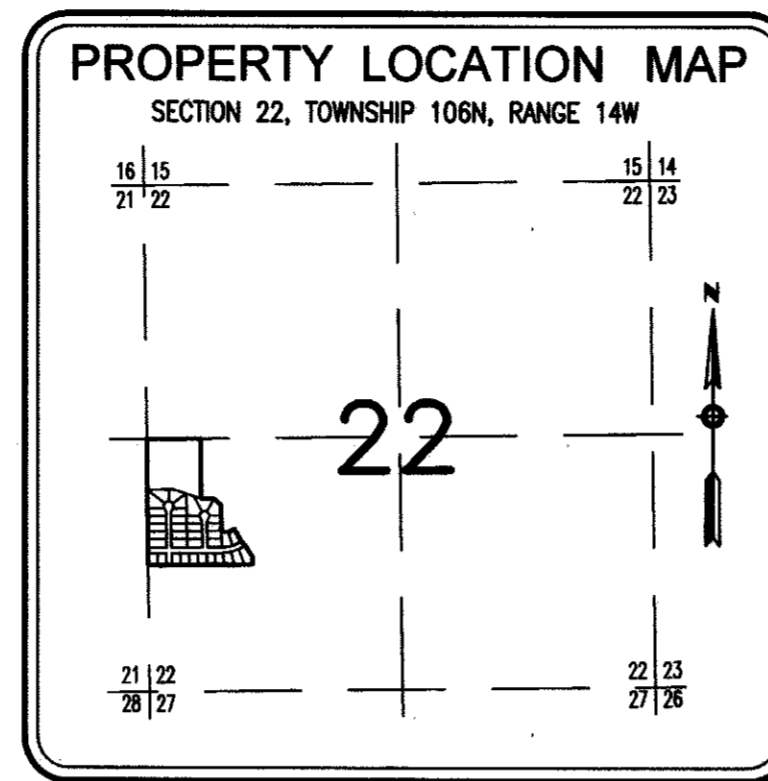


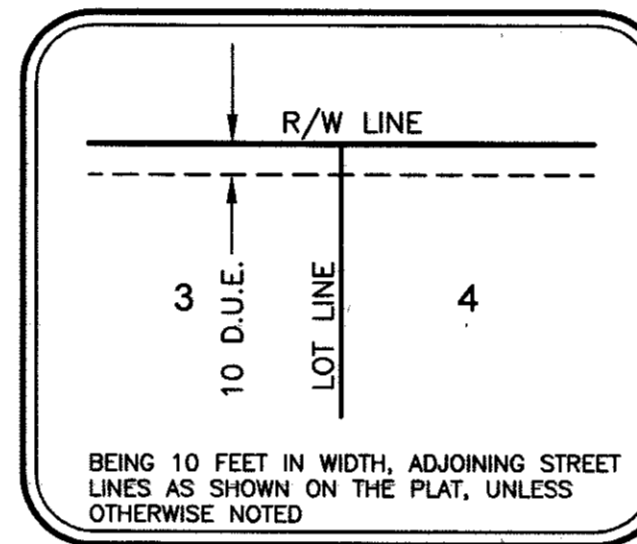
HART FARM FOURTH



BASIS OF BEARING SYSTEM : ALL BEARINGS ARE IN RELATIONSHIP WITH THE WEST LINE OF THE SW 1/4 OF SEC. 22-106-14 WHICH IS ASSUMED TO BE S01°21'50"E.



DRAINAGE AND UTILITY EASEMENT DETAIL



NOTE:
ALL MONUMENTS SHOWN THUS: ○ ARE 5/8" I.D. CAPPED PIPES WITH LICENSE NO. 18887 WHICH WILL BE SET WITHIN 1 YEAR AFTER RECORDING OF THIS PLAT.
ALL MONUMENTS SHOWN THUS: ● ARE FOUND 5/8" PIPES UNLESS OTHERWISE NOTED.
D.U.E. = DRAINAGE AND UTILITY EASEMENT
E.D.E. = EXISTING DRAINAGE EASEMENT

KNOW ALL PERSONS BY THESE PRESENTS: That Woodcrest Development, Inc., a Minnesota corporation, owner of the following described property:

A part of the North Half of the Southwest Quarter of Section 22, Township 106 North, Range 14 West, Olmsted County, Minnesota, described as follows:

Beginning at the northwest corner of the Southwest Quarter of said Section 22; thence South 01 degree 21 minutes 50 seconds East, assumed bearing, along the west line of said Southwest Quarter, 1316.69 feet to the southwest corner of the North Half of said Southwest Quarter; thence North 88 degrees 48 minutes 20 seconds East, 1088.34 feet to the southwest corner of Lot 3, Block 7, HART FARM SOUTH (the next ten courses are along the westerly lines of HART FARM SOUTH, HART FARM THIRD and HART FARM SECOND); thence North 01 degree 11 minutes 40 seconds West, 80.00 feet; thence North 33 degrees 00 minutes 57 seconds West, 135.66 feet; thence North 44 degrees 55 minutes 55 seconds West, 61.81 feet; thence North 30 degrees 10 minutes 15 seconds West, 150.64 feet; thence South 62 degrees 26 minutes 29 seconds West, 70.85 feet; thence South 88 degrees 48 minutes 32 seconds West, 69.19 feet; thence North 01 degree 11 minutes 28 seconds West, 283.66 feet; thence North 51 degrees 27 minutes 34 seconds West, 100.72 feet; thence South 88 degrees 48 minutes 32 seconds West, 132.80 feet; thence North 01 degree 13 minutes 30 seconds West, 628.68 feet to the north line of the Southwest Quarter of said Section 22; thence South 88 degrees 46 minutes 30 seconds West along said north line, 561.75 feet to the point of beginning.

Containing in all, 22.21 acres, more or less.

Has caused the same to be surveyed and platted as HART FARM FOURTH and does hereby dedicate to the public for public use, the public ways and the drainage and utility easements as created by this plat.

In witness whereof, said Woodcrest Development, Inc., a Minnesota corporation, has caused these presents to be signed by its proper officer this 27th day of NOVEMBER, 2013.

SIGNED: WOODCREST DEVELOPMENT, INC.

Daniel L. Penz
Daniel L. Penz, Chief Manager

STATE OF MINNESOTA
COUNTY OF OLMTSTED

This instrument was acknowledged before me on NOVEMBER 27th, 2013 by Daniel L. Penz, Chief Manager, member of Woodcrest Development, Inc., a Minnesota corporation.

Anna Sue Larson
Notary Public, Olmsted County, Minnesota

ANNE SUE LARSON
Notary Printed Name

My commission expires 01/31/2019

SURVEYOR'S CERTIFICATE

I Mark E. Severson do hereby certify that this plat was prepared by me or under my direct supervision; that I am a duly Licensed Land Surveyor in the State of Minnesota; that this plat is a correct representation of the boundary survey; that all mathematical data and labels are correctly designated on this plat; that all monuments depicted on this plat have been, or will be correctly set within one year; that all water boundaries and wet lands, as defined in Minnesota Statutes, Section 505.01, Subd. 3, as of the date of this certificate are shown and labeled on this plat; and all public ways are shown and labeled on this plat.

Dated this 27 day of NOVEMBER, 2013.

Mark E. Severson
Mark E. Severson, Professional Surveyor
Minnesota License No. 18887

STATE OF MINNESOTA
COUNTY OF OLMTSTED

The instrument was acknowledged before me on NOVEMBER 27th, 2013 by Mark E. Severson.

Anna Sue Larson
Notary Public, Olmsted County, Minnesota

ANNE SUE LARSON
Notary Printed Name

My commission expires 01/31/2019

OLMTSTED COUNTY SURVEYOR

I hereby certify that in accordance with Minnesota Statutes, Section 505.021, Subd. 11, this plat has been reviewed and approved this 9 day of DECEMBER, 2013.

Paul S. Thorsen
Olmsted County Surveyor

CITY APPROVAL

State of Minnesota
County of Olmsted
City of Rochester

I, Judy K. Scherr, City Clerk, in and for the City of Rochester, do hereby certify that on the 5th day of August, 2013, the accompanying plat was duly approved by the Common Council of the City of Rochester. In testimony thereof, I have hereunto signed my name and affixed the seal of said City of Rochester this 9th day of DECEMBER, 2013.

Judy K. Scherr
Judy K. Scherr, City Clerk

PROPERTY RECORDS AND LICENSING

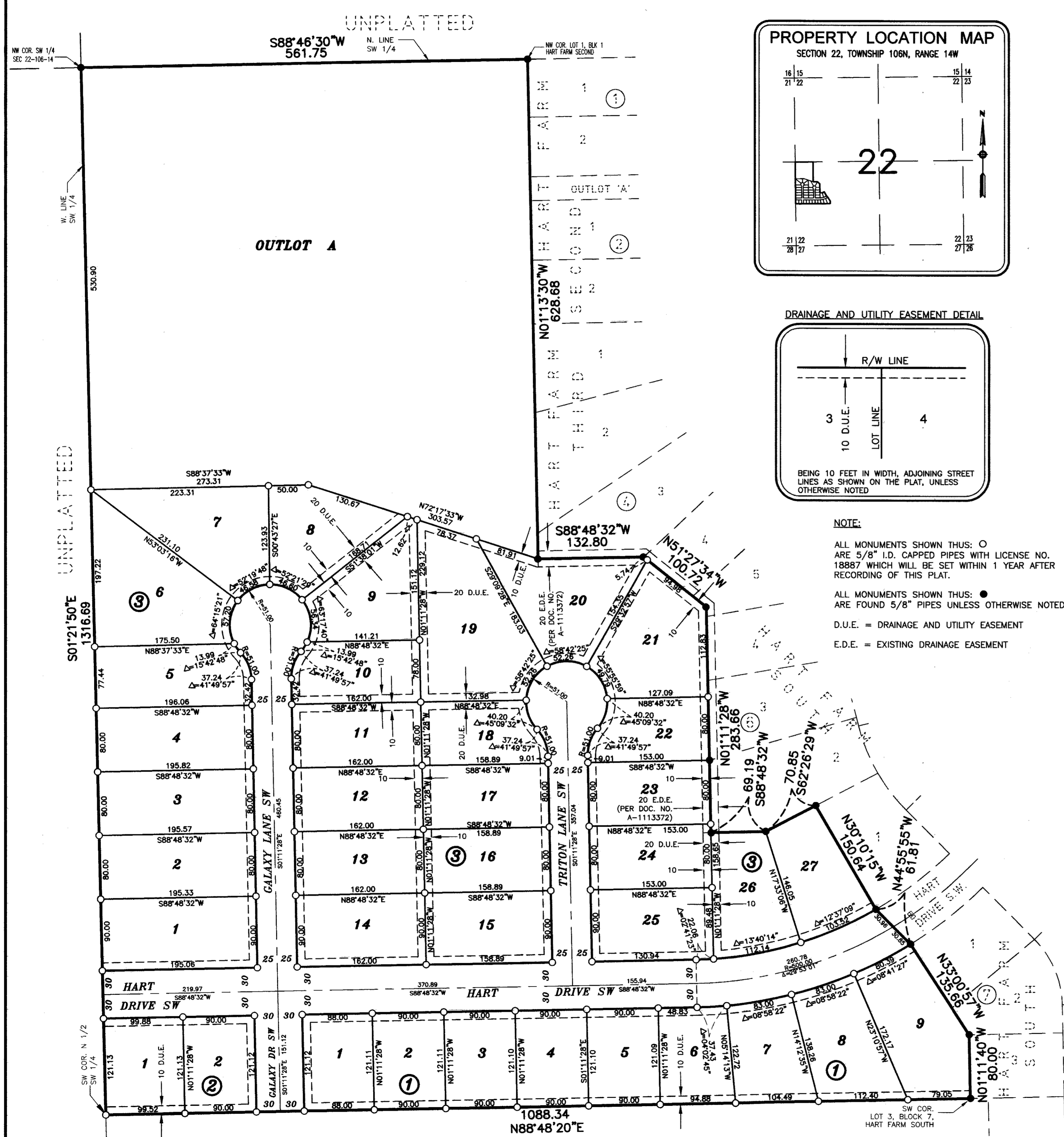
Taxes payable in the year 2013 on the land described herein have been paid, there are no delinquent taxes and transfer has been entered this 10th day of DECEMBER, 2013.

DOCUMENT NUMBER A-1337678

I hereby certify that this instrument was filed in the Office of Property Records and Licensing for the record on this 10th day of DECEMBER, 2013, at 9 o'clock A.M., and was duly recorded in the Olmsted County records.

W. Mark Karpaki
Director of Property Records & Licensing

Wendy von Wald
Deputy



1268A

McGhie & Betts, Inc.
1648 Third Avenue S.E.
Rochester, MN 55904
Telephone: 507-289-3919
Fax: 507-289-7333
mbi@mcghiebetts.com

Land Surveying
Civil Engineering
Consulting
Land Planning
Geotechnical Engineering
Construction Material Testing
Landscape Architecture

Betts, Inc.