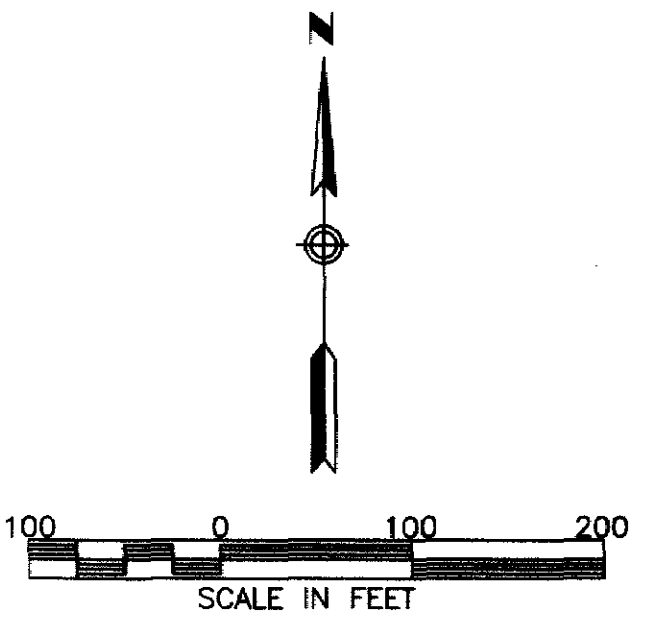


THE HOMESTEAD SECOND



KNOW ALL PERSONS BY THESE PRESENTS: That The Homestead at Rochester, Inc., a Minnesota non-profit corporation, owner of the following described property:

Lots 1, 2 and 4, Block 1 and Outlot 'A', all in THE HOMESTEAD FIRST REPLAT, Rochester, Minnesota.

Containing 28.25 acres, more or less.

Has caused the same to be surveyed and platted as THE HOMESTEAD SECOND.

In witness whereof, said The Homestead at Rochester, Inc., a Minnesota non-profit corporation, has caused these presents to be signed by its Asst Secretary this 18 day of November, 2013.

SIGNED: THE HOMESTEAD AT ROCHESTER, INC.

Nancy Gavin

STATE OF MINNESOTA
COUNTY OF Hennepin

This instrument was acknowledged before me on November 18, 2013 by Nancy Gavin, Asst Secretary of The Homestead at Rochester, Inc., a Minnesota non-profit corporation.

Lisa M. Klancke
Notary Public, Hennepin County, Minnesota

Lisa M. Klancke
Notary Printed Name

My commission expires 1/31/2015

SURVEYOR'S CERTIFICATE

I Mark E. Severson do hereby certify that this plat was prepared by me or under my direct supervision; that I am a duly Licensed Land Surveyor in the State of Minnesota; that this plat is a correct representation of the boundary survey; that all mathematical data and labels are correctly designated on this plat; that all monuments depicted on this plat have been, or will be correctly set within one year; that all water boundaries and wet lands, as defined in Minnesota Statutes, Section 505.01, Subd. 3, as of the date of this certificate are shown and labeled on this plat; and all public ways are shown and labeled on this plat.

Dated this 15 day of November, 2013.

Mark E. Severson
Mark E. Severson, Professional Surveyor
Minnesota License No. 18887

STATE OF MINNESOTA
COUNTY OF OLMSTED

The instrument was acknowledged before me on November 15, 2013 by Mark E. Severson.

Sheel Ryan
Notary Public, Olmsted County, Minnesota

Sheel Ryan
Notary Printed Name

My commission expires Jan 31, 2018

OLMSTED COUNTY SURVEYOR

I hereby certify that in accordance with Minnesota Statutes, Section 505.021, Subd. 11, this plat has been reviewed and approved this 13 day of NOVEMBER, 2013.

Paul A. Thurston
Olmsted County Surveyor

CITY APPROVAL

State of Minnesota
County of Olmsted
City of Rochester

I, Judy K. Scherr, City Clerk, in and for the City of Rochester, do hereby certify that on the 18th day of NOVEMBER, 2013, the accompanying plat was duly approved by the Common Council of the City of Rochester. In testimony thereof, I have hereunto signed my name and affixed the seal of said City of Rochester this 21st day of NOVEMBER, 2013.

Judy K. Scherr
Judy K. Scherr, City Clerk

PROPERTY RECORDS AND LICENSING

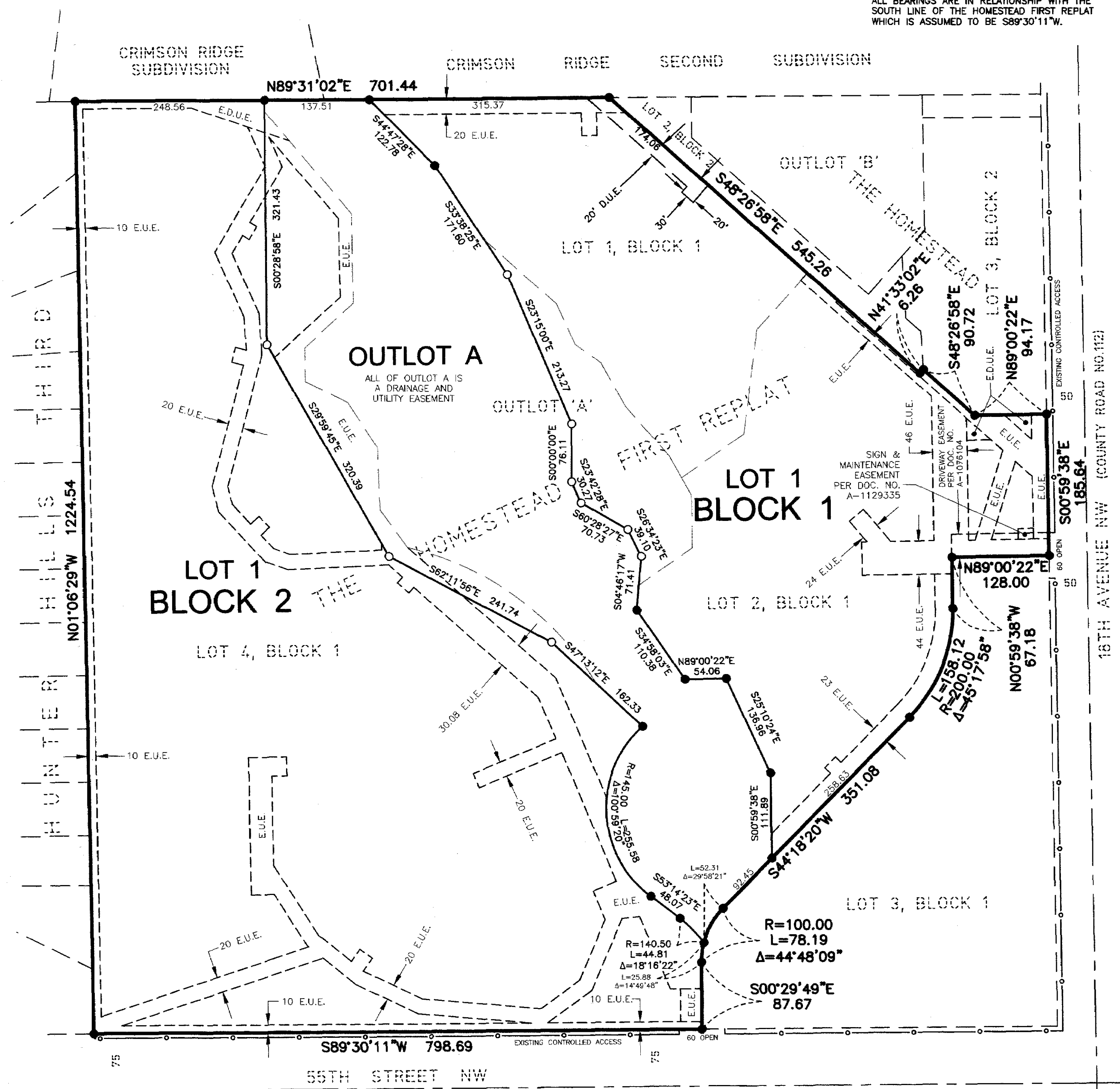
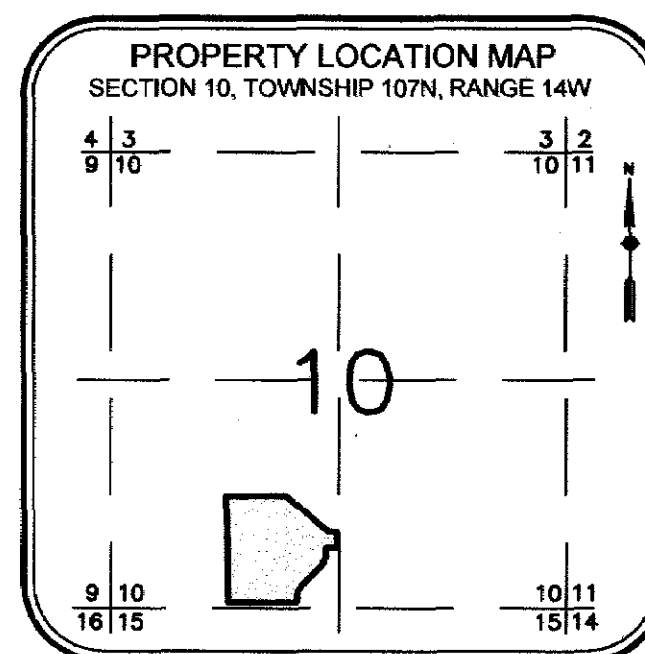
Taxes payable in the year 2013 on the land described herein have been paid, there are no delinquent taxes and transfer has been entered this 21st day of November, 2013.

DOCUMENT NUMBER A-1336541

I hereby certify that this instrument was filed in the Office of Property Records and Licensing for the record on this 21st day of November, 2013, at 1 o'clock P.M., and was duly recorded in the Olmsted County records.

W Mark Knapski
Director of Property Records & Licensing

Wendy von Wald
Deputy



NOTE:
ALL MONUMENTS SHOWN THUS: ○
ARE 5/8" I.D. CAPPED PIPES WITH LICENSE NO. 18887 WHICH WILL BE SET WITHIN 1 YEAR AFTER RECORDING OF THIS PLAT.
ALL MONUMENTS SHOWN THUS: ●
ARE FOUND 5/8" PIPES UNLESS OTHERWISE NOTED.
E.U.E. = EXISTING UTILITY EASEMENT
E.D.U.E. = EXISTING DRAINAGE AND UTILITY EASEMENT
D.U.E. = DRAINAGE AND UTILITY EASEMENT

McGhie & Betts, Inc.
1648 Third Avenue S.E.
Rochester, MN 55904
Telephone: 507-289-3919
Fax: 507-289-7333
mbl@mcghiebetts.com

McGhie
Land Surveying
Civil Engineering
Consulting
Land Planning
Geotechnical Engineering
Construction Material Testing
Landscape Architecture

Betts, Inc.

1267A

02349-00 (4173/12607)