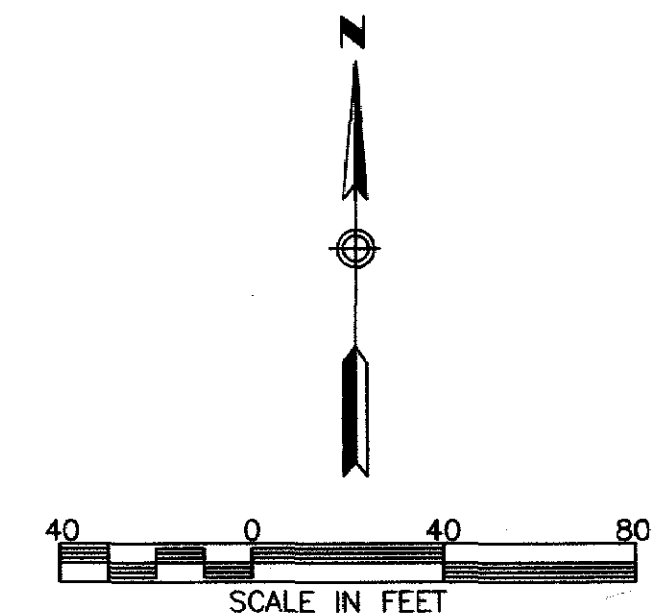
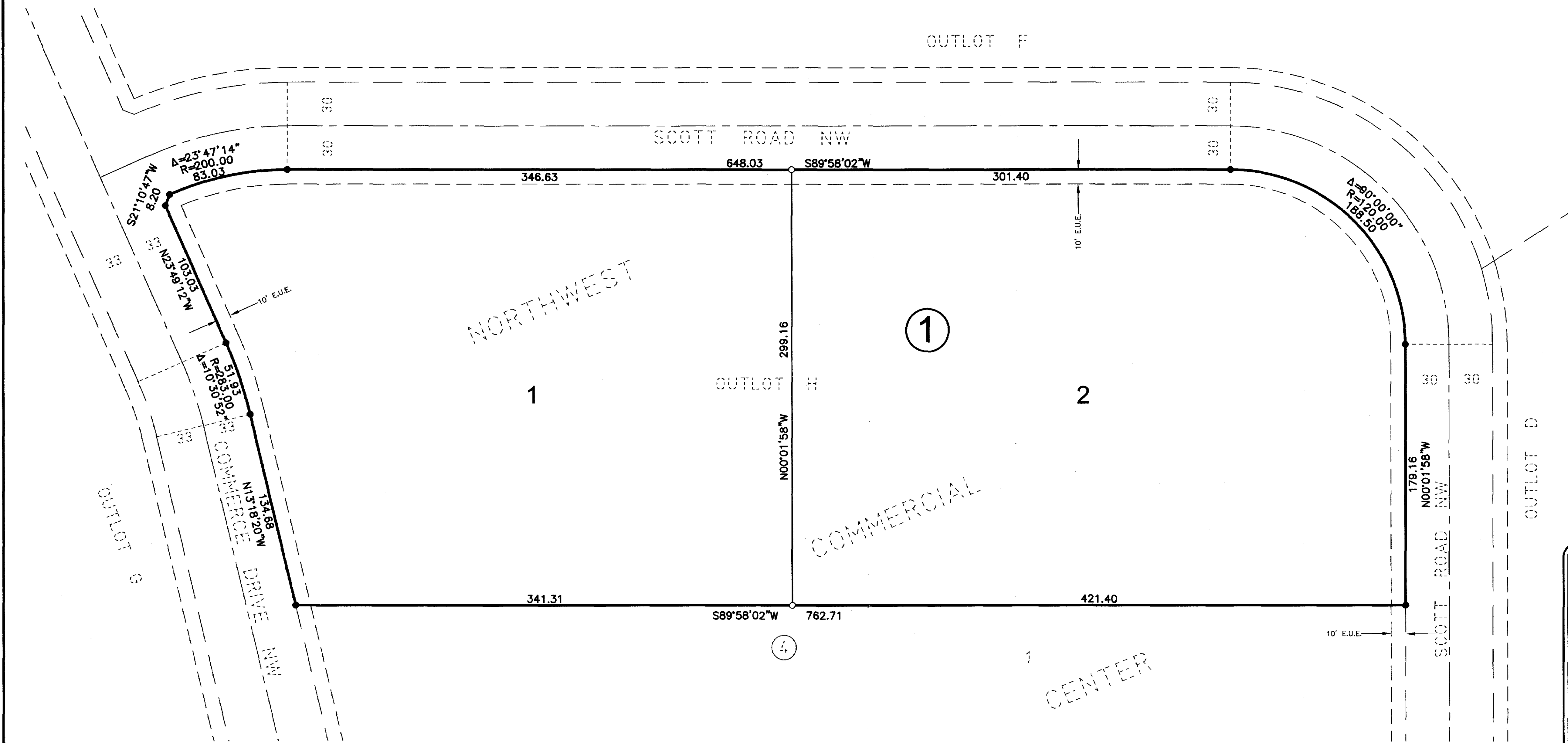
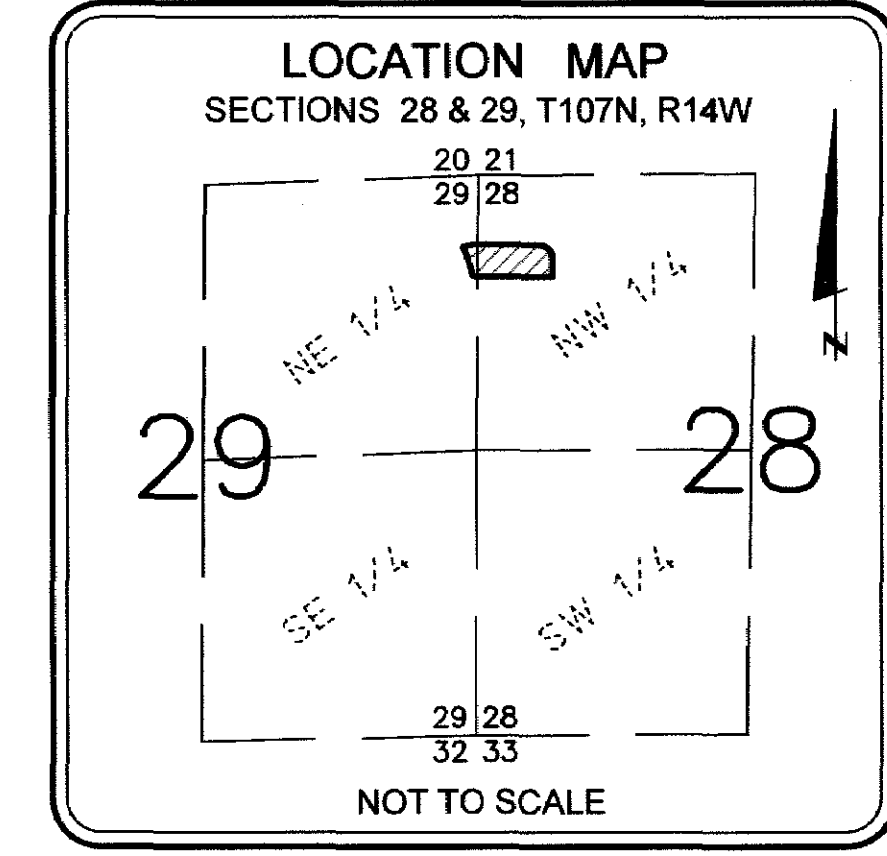


NORTHWEST COMMERCIAL CENTER SECOND



BASIS OF BEARING SYSTEM:
 ALL BEARINGS ARE IN RELATIONSHIP WITH THE SOUTH
 LINE OF OUTLOT H, NORTHWEST COMMERCIAL CENTER,
 WHICH IS ASSUMED TO BE SOUTH 89 DEGREES 58
 MINUTES 02 SECONDS WEST.

NOTE:
 ALL MONUMENTS SHOWN THUS: ○
 ARE 5/8" I.D. CAPPED PIPES WITH LICENSE
 NO. 18887 WHICH WILL BE SET WITHIN 1 YEAR
 AFTER RECORDING OF THIS PLAT.
 ALL MONUMENTS SHOWN THUS: ●
 ARE FOUND 5/8" PIPES UNLESS OTHERWISE
 NOTED.
 D.U.E. = DRAINAGE AND UTILITY EASEMENT



KNOW ALL PERSONS BY THESE PRESENTS: That Northwest Investments of La Crosse, LLC, a Wisconsin limited liability company, owner of the following described property:
 Outlot H, NORTHWEST COMMERCIAL CENTER, Rochester, Minnesota.
 Containing 5.44 acres, more or less.
 Has caused the same to be surveyed and platted as NORTHWEST COMMERCIAL CENTER SECOND.
 In witness whereof, said Northwest Investments of La Crosse, LLC, a Wisconsin limited liability company, has caused these presents to be signed by its proper officer this 12 day of September, 2013.
 SIGNED: NORTHWEST INVESTMENTS OF LA CROSSE, LLC
Donald P. Zietlow
 Donald P. Zietlow, Member
 STATE OF Minnesota
 COUNTY OF Dodge
 This instrument was acknowledged before me on September 12, 2013, by Donald P. Zietlow, Member of Northwest Investments of La Crosse, LLC, a Wisconsin limited liability company.
Wade Delisle
 Notary Public, Olmsted County, Minnesota
 My commission expires January 31, 2015

SURVEYOR'S CERTIFICATE
 I Mark E. Severson do hereby certify that this plat was prepared by me or under my direct supervision; that I am a duly Licensed Land Surveyor in the State of Minnesota; that this plat is a correct representation of the boundary survey; that all mathematical data and labels are correctly designated on this plat; that all monuments depicted on this plat have been, or will be correctly set within one year; that all water boundaries and wet lands, as defined in Minnesota Statutes, Section 505.01, Subd. 3, as of the date of this certificate are shown and labeled on this plat; and all public ways are shown and labeled on this plat.
 Dated this 13 day of SEPTEMBER, 2013.
Mark E. Severson
 Mark E. Severson, Licensed Land Surveyor
 Minnesota License No. 18887
 STATE OF MINNESOTA
 COUNTY OF OLMDSTED
 The instrument was acknowledged before me on September 13, 2013 by Mark E. Severson.
Beverly E. Delisle
 Notary Public, Olmsted County, Minnesota
 My commission expires January 31, 2015
COUNTY SURVEYOR
 I hereby certify that in accordance with Minnesota Statutes, Section 505.021, Subd. 11, this plat has been reviewed and approved this 12 day of SEPTEMBER, 2013.
Paul S. Thorsen
 Olmsted County Surveyor

CITY APPROVAL
 State of Minnesota
 County of Olmsted
 City of Rochester
 I, Judy K. Scherr, City Clerk, in and for the City of Rochester, do hereby certify that on the 12th day of SEPTEMBER, 2013, the accompanying plat was duly approved by the Common Council of the City of Rochester. In testimony thereof I have hereunto signed my name and affixed the seal of said City of Rochester this 20th day of SEPTEMBER, 2013.
Judy K. Scherr
 Judy K. Scherr, City Clerk
PROPERTY RECORDS AND LICENSING
 Taxes payable in the year 2013 on the land described herein have been paid, there are no delinquent taxes and transfer has been entered this 20th day of September, 2013.
 DOCUMENT NUMBER A-1332020
 I hereby certify that this instrument was filed in the Office of Property Records and Licensing for the record on this 20th day of September, 2013, at 10:22 o'clock A.M., and was duly recorded in the Olmsted County records.
W. Mark Krupski
 Director of Property Records & Licensing
Wendy von Wald
 Deputy

McGhie & Betts, Inc.
 1648 Third Avenue S.E.
 Rochester, MN 55904
 Telephone: 507-289-3919
 Fax: 507-289-7333
 mbi@mcghiebetts.com

McGhie

Betts, Inc.

Land Surveying
 Civil Engineering
 Consulting
 Land Planning
 Geotechnical Engineering
 Construction Material Testing
 Landscape Architecture

1262A