

HIMMELS GARTEN

KNOW ALL PERSONS BY THESE PRESENTS: That Fred E. Schmidt and Darlene M. Schmidt, husband and wife, owners, of the following proposed property:

The Northeast Quarter of the Northeast Quarter of Section 22, Township 106 North, Range 13 West, Olmsted County, Minnesota, EXCEPT: Beginning at the southeast corner of said Northeast Quarter of the Northeast Quarter; thence North 00 degrees 29 minutes 16 seconds West, assumed bearing, along the east line of said Northeast Quarter of the Northeast Quarter, 519.00 feet; thence North 89 degrees 57 minutes 58 seconds West, parallel with the south line of said Northeast Quarter of the Northeast Quarter, 240.00 feet; thence South 00 degrees 29 minutes 16 seconds East, 89.00 feet; thence North 89 degrees 57 minutes 58 seconds West, 175.00 feet; thence South 00 degrees 29 minutes 16 seconds East, 207.00 feet; thence North 89 degrees 57 minutes 58 seconds West, 73.00 feet; thence South 00 degrees 29 minutes 16 seconds East, 223.00 feet to the south line of said Northeast Quarter of the Northeast Quarter; thence South 89 degrees 57 minutes 58 seconds East, along said south line, 488.00 feet to the point of beginning.

Containing 34.94 acres, more or less.

Have caused the same to be surveyed and platted as HIMMELS GARTEN and do hereby dedicate to the public for public use, the public ways and the drainage and utility easements as created by this plat.

In witness whereof said Fred E. Schmidt and Darlene M. Schmidt, husband and wife, have hereunto set their hands this 30 day of JULY, 2013.

Fred E. Schmidt
Fred E. Schmidt
Darlene M. Schmidt
Darlene M. Schmidt

STATE OF MINNESOTA
COUNTY OF OLMSTED

This instrument was acknowledged before me on July 30, 2013 by Fred E. Schmidt and Darlene M. Schmidt.

Beverly E. Delisle
Notary Public, Olmsted County, Minnesota
Beverly E. Delisle
Notary Printed Name

My commission expires Jan. 31, 2015

SURVEYOR'S CERTIFICATE

I, Mark E. Severson do hereby certify that this plat was prepared by me or under my direct supervision; that I am a duly Licensed Land Surveyor in the State of Minnesota; that this plat is a correct representation of the boundary survey; that all mathematical data and labels are correctly designated on this plat; that all monuments depicted on this plat have been, or will be correctly set within one year; that all water boundaries and wet lands, as defined in Minnesota Statutes, Section 505.01, Subd. 3, as of the date of this certificate are shown and labeled on this plat; and all public ways are shown and labeled on this plat.

Dated this 30 day of July, 2013.

Mark E. Severson
Mark E. Severson, Professional Surveyor
Minnesota License No. 18887

STATE OF MINNESOTA
COUNTY OF OLMSTED

The instrument was acknowledged before me on July 30, 2013 by Mark E. Severson.

Beverly E. Delisle
Notary Public, Olmsted County, Minnesota
Beverly E. Delisle
Notary Printed Name

My commission expires Jan. 31, 2015

OLMSTED COUNTY SURVEYOR

I hereby certify that in accordance with Minnesota Statutes, Section 505.021, Subd. 11, this plat has been reviewed and approved this 30 day of JULY, 2013.

Paul S. Thorsen
Olmsted County Surveyor

OLMSTED COUNTY ENVIRONMENTAL COMMISSION

The Olmsted County Environmental Commission has approved the plans for the water supply and sewage treatment for the plat.

Richard Alwes
Olmsted County Environmental Specialist

OLMSTED COUNTY ENGINEER

Recommended for approval this 30th day of July, 2013.

Kay M. Breinck
Olmsted County Highway Engineer

MARION TOWNSHIP BOARD

We hereby certify that on the 11th day of June, 2013 the Board of Supervisors for Marion Township, Olmsted County, Minnesota, approved this plat.

Roger Jute
Chairman

Janet Hoffmann
Town Clerk

OLMSTED COUNTY PLANNING ADVISORY COMMISSION

The members of the Olmsted County Planning Advisory Commission do hereby certify that we have examined the plat as shown, and find that it conforms to the provisions of the Subdivision Ordinance of the County of Olmsted.

Bruce Bergquist
Commission Chair

OLMSTED COUNTY BOARD

I do hereby certify that on the 13 day of August, 2013 the Board of Commissioners of Olmsted County, Minnesota, approved this plat.

John B...
Olmsted County Board Chairman

PROPERTY RECORDS AND LICENSING

Taxes payable in the year 2013 on the land described herein have been paid, there are no delinquent taxes and transfer has been entered this 22ND day of AUGUST, 2013.

DOCUMENT NUMBER A-1329807

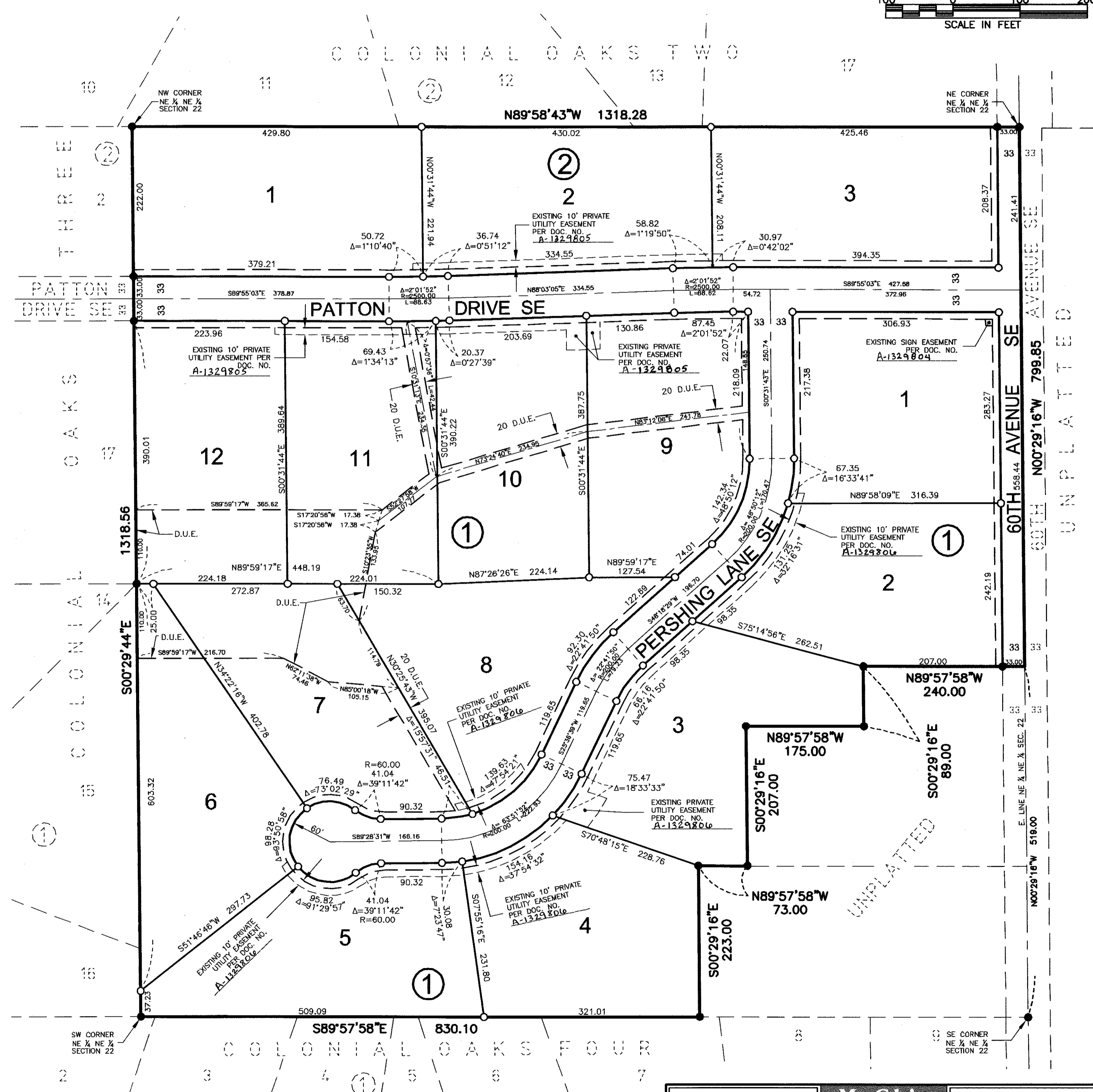
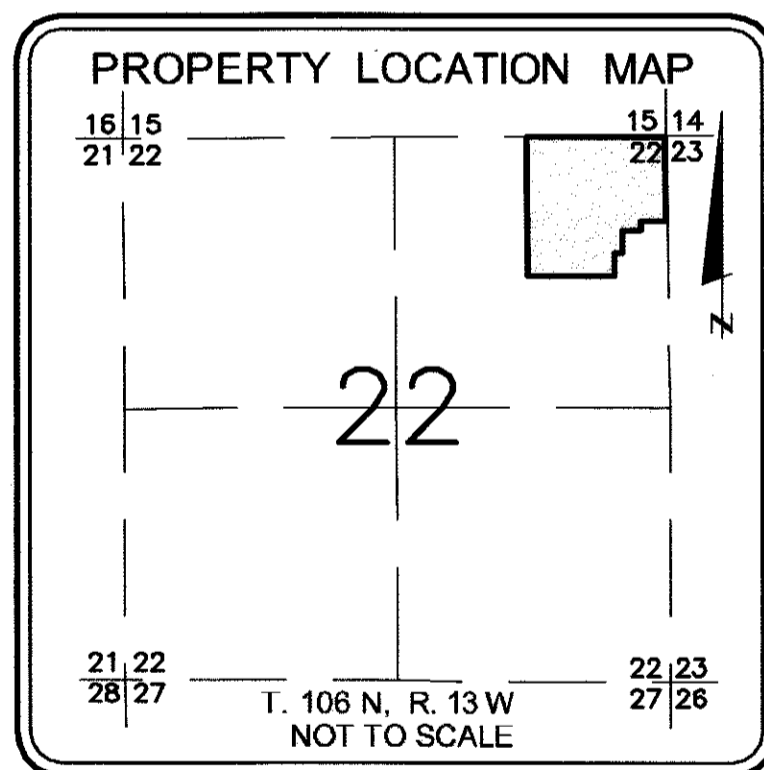
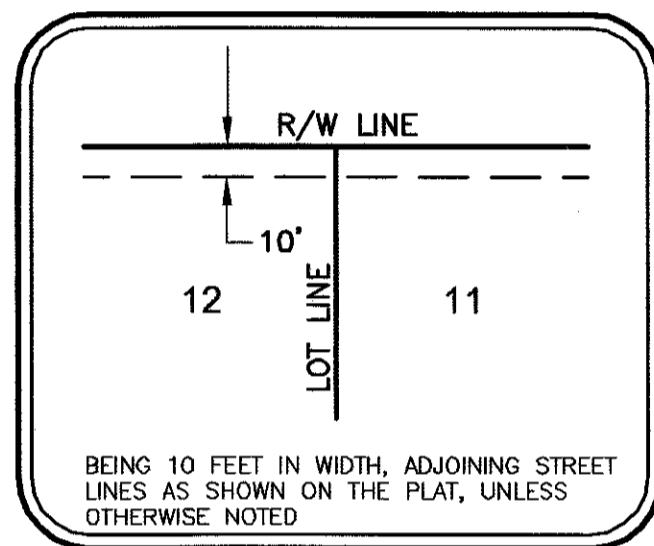
I hereby certify that this instrument was filed in the Office of Property Records and Licensing for the record on this 22ND day of AUGUST, 2013, at 1 o'clock P.M., and was duly recorded in the Olmsted County records.

W. Mark Krupski
Director of Property Records & Licensing
Wendy von Wald
Deputy

BASIS OF BEARING SYSTEM :
ALL BEARINGS ARE IN RELATIONSHIP WITH THE EAST
LINE OF THE NORTHEAST QUARTER OF SECTION 22,
TOWNSHIP 106 NORTH, RANGE 13 WEST, OLMSTED
COUNTY, MINNESOTA, WHICH IS ASSUMED TO BE
NORTH 00 DEGREES 29 MINUTES 16 SECONDS WEST.



DRAINAGE AND UTILITY EASEMENT (D.U.E.) DETAIL



NOTE:

ALL MONUMENTS SHOWN THUS: ARE 5/8" I.D. CAPPED PIPES WITH LICENSE NO. 18887 WHICH WILL BE SET WITHIN 1 YEAR AFTER RECORDING OF THIS PLAT.

ALL MONUMENTS SHOWN THUS: ARE FOUND IRON MONUMENTS UNLESS OTHERWISE NOTED.

1260A

McGhie & Betts, Inc.
1648 Third Avenue S.E.
Rochester, MN 55904
Telephone: 507-289-3919
Fax: 507-289-7333
mbi@mcghiebetts.com

McGhie
Betts, Inc.

Land Surveying
Civil Engineering
Consulting
Land Planning
Geotechnical Engineering
Construction Material Testing
Landscape Architecture