

ROCHESTER TOWNE CLUB FIRST REPLAT

KNOW ALL PERSONS BY THESE PRESENTS: That BSH Rochester 1, LLC, a Delaware limited liability company, owner of the following described property:

Outlot B, ROCHESTER TOWNE CLUB, Rochester, Minnesota.

Containing 14.10 acres, more or less.

Has caused the same to be surveyed and platted as ROCHESTER TOWNE CLUB FIRST REPLAT, and does hereby dedicate to the public for public use the drainage and utility easements as created by this plat.

In witness whereof said BSH Rochester 1, LLC, a Delaware limited liability company, has caused these presents to be signed by its proper officer this 23rd day of April, 2013.

Signed: BSH ROCHESTER 1, LLC
By Daniel P. McCoy, Chief Manager.

STATE OF MINNESOTA
COUNTY OF OLMTSTED

This instrument was acknowledged before me on April 23, 2013 by Daniel P. McCoy, Chief Manager of BSH Rochester 1, LLC, a Delaware limited liability company.

Beverly E. Delisle Notary Public, Olmsted County, Minnesota
Beverly E. Delisle Notary Printed Name

My commission expires Jan. 31, 2015

SURVEYOR'S CERTIFICATE

I Mark E. Severson do hereby certify that this plat was prepared by me or under my direct supervision; that I am a duly Licensed Land Surveyor in the State of Minnesota; that this plat is a correct representation of the boundary survey; that all mathematical data and labels are correctly designated on this plat; that all monuments depicted on this plat have been, or will be correctly set within one year; that all water boundaries and wet lands, as defined in Minnesota Statutes, Section 505.01, Subd. 3, as of the date of this certificate are shown and labeled on this plat; and all public ways are shown and labeled on this plat.

Dated this 23 day of April, 2013.

Mark E. Severson
Mark E. Severson, Professional Surveyor
Minnesota License No. 18887

STATE OF MINNESOTA
COUNTY OF OLMTSTED

The instrument was acknowledged before me on April 23, 2013 by Mark E. Severson.

Beverly E. Delisle Notary Public, Olmsted County, Minnesota
Beverly E. Delisle Notary Printed Name

My commission expires Jan. 31, 2015

COUNTY SURVEYOR

I hereby certify that in accordance with Minnesota Statutes, Section 505.021, Subd. 11, this plat has been reviewed and approved this 24 day of APRIL, 2013.

Joel S. Thoreson
Olmsted County Surveyor

CITY APPROVAL

State of Minnesota
County of Olmsted
City of Rochester

I, Valori Langseth, Deputy City Clerk, in and for the City of Rochester, do hereby certify that on the 15th day of October, 2013, the accompanying plat was duly approved by the Common Council of the City of Rochester. In testimony thereof, I have hereunto signed my name and affixed the seal of said City of Rochester this 24th day of April, 2013.

Valori Langseth
Judy K. Schorr, City Clerk
Valori Langseth, Deputy

PROPERTY RECORDS AND LICENSING

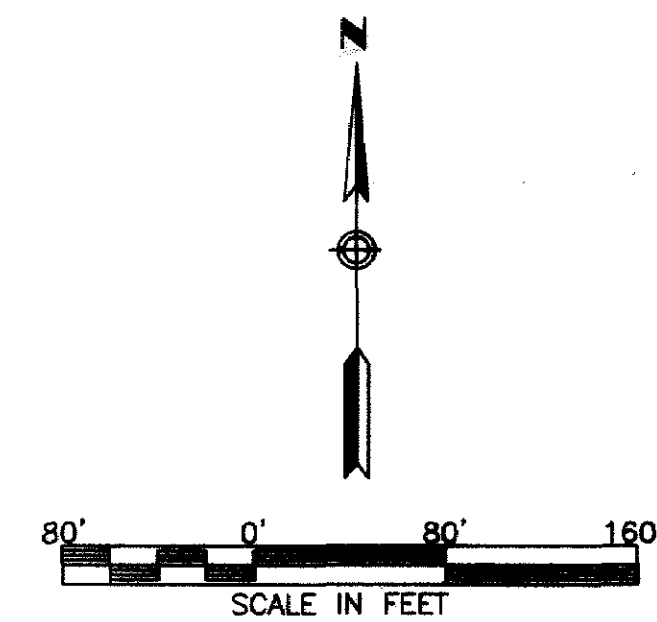
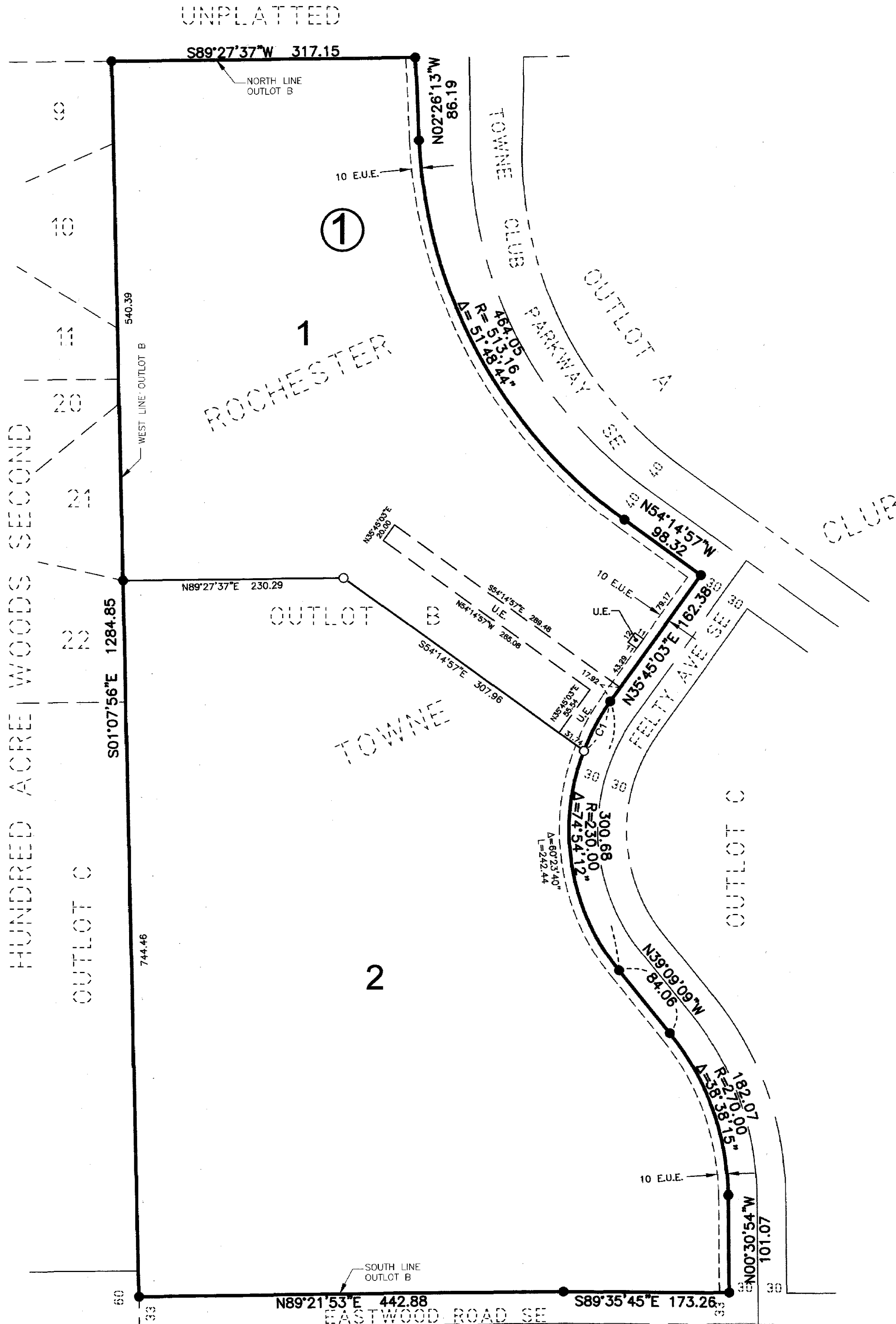
Taxes payable in the year 2013 on the land described herein have been paid, there are no delinquent taxes and transfer has been entered this 25th day of April, 2013.

DOCUMENT NUMBER A-1318823

I hereby certify that this instrument was filed in the Office of Property Records and Licensing on this 25th day of April, 2013, at 8:45 o'clock A.M., and was duly recorded in the Olmsted County records.

W. Mark Krupski
Director of Property Records & Licensing

Wendy von Wald
Deputy



BASIS OF BEARING SYSTEM:
ALL BEARINGS ARE IN RELATIONSHIP WITH THE WEST LINE OF OUTLOT B, ROCHESTER TOWNE CLUB, WHICH IS ASSUMED TO BE S01°07'56"E.

CURVE DATA

| CURVE | DELTA | LENGTH |
|-------|-----------|--------|
| C1 | 14°30'32" | 58.24 |

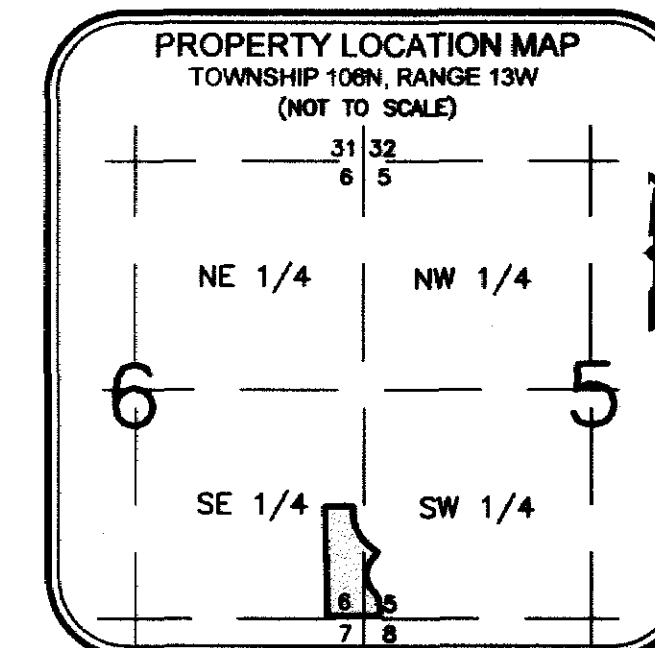
NOTE:

ALL MONUMENTS SHOWN THUS: ○ ARE 5/8" I.D. CAPPED PIPES WITH LICENSE NO. 18887 WHICH WILL BE SET WITHIN 1 YEAR AFTER RECORDING OF THIS PLAT.

ALL MONUMENTS SHOWN THUS: ● ARE FOUND IRON PIPES UNLESS OTHERWISE NOTED.

U.E. = UTILITY EASEMENT

E.U.E. = EXISTING UTILITY EASEMENT



1252A

McGhie & Betts, Inc.
1648 Third Avenue S.E.
Rochester, MN 55904
Telephone: 507-289-3919
Fax: 507-289-7333
mbi@mcghiebetts.com

McGhie
Betts, Inc.

Land Surveying
Civil Engineering
Consulting
Land Planning
Geotechnical Engineering
Construction Material Testing
Landscape Architecture