

CAIRNBRAE STABLES

KNOW ALL MEN BY THESE PRESENTS: That Cairnbrae LLC, a Minnesota limited liability company, owner of the following described property:

Lots 2 and 3, Block 2, CAIRNBRAE FARMS SUBDIVISION, Olmsted County, Minnesota.

Containing 20.94 acres, more or less.

Has caused the same to be surveyed and platted as CAIRNBRAE STABLES and does hereby dedicate to the public for public use, the public ways and the drainage and utility easements as created by this plat.

In witness whereof, said Cairnbrae LLC, has caused these presents to be signed by its proper officer this 24th day of July, 2012.

SIGNED: Daniel J. McPherson

Daniel J. McPherson
President

STATE OF MINNESOTA
COUNTY OF OLMSTED

This instrument was acknowledged before me on July 24, 2012 by Daniel J. McPherson, President.

Beverly E. Delisle
Notary Public, Olmsted County, Minnesota

Beverly E. Delisle
Notary Printed Name

My commission expires Jan. 31, 2015

SURVEYOR'S CERTIFICATE

I, Mark E. Severson do hereby certify that this plat was prepared by me or under my direct supervision; that I am a duly Licensed Land Surveyor in the State of Minnesota; that this plat is a correct representation of the boundary survey; that all mathematical data and labels are correctly designated on this plat; that all monuments depicted on this plat have been, or will be correctly set within one year; that all water boundaries and wet lands, as defined in Minnesota Statutes, Section 505.01, Subd. 3, as of the date of this certificate are shown and labeled on this plat; and all public ways are shown and labeled on this plat.

Dated this 23 day of July, 2012.

Mark E. Severson
Mark E. Severson, Professional Surveyor
Minnesota License No. 18887

STATE OF MINNESOTA
COUNTY OF OLMSTED

The instrument was acknowledged before me on July 23, 2012 by Mark E. Severson.

Beverly E. Delisle
Notary Public, Olmsted County, Minnesota

Beverly E. Delisle
Notary Printed Name

My commission expires Jan. 31, 2015

OLMSTED COUNTY SURVEYOR

I hereby certify that in accordance with Minnesota Statutes, Section 505.021, Subd. 11, this plat has been reviewed and approved this 17 day of July, 2012.

Paul A. Thorsen
Olmsted County Surveyor

OLMSTED COUNTY ENVIRONMENTAL COMMISSION

The Olmsted County Environmental Commission has approved the plans for the water supply and sewage treatment for the plat.

Rita Altes
Olmsted County Environmental Specialist

ROCHESTER TOWNSHIP BOARD

We hereby certify that on the 14 day of June, 2012 the Board of Supervisors for Rochester Township, Olmsted County, Minnesota, approved this plat.

Bill Malt
Chairman

Larry Swann
Town Clerk

OLMSTED COUNTY BOARD

I do hereby certify that on the 24 day of July, 2012 the Board of Commissioners of Olmsted County, Minnesota, approved this plat.

Kenneth Brown
Olmsted County Board Chairman

PROPERTY RECORDS AND LICENSING

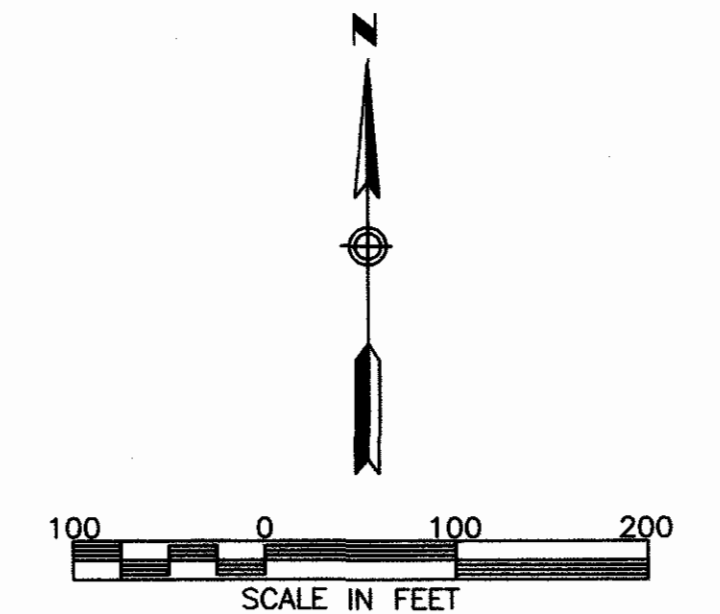
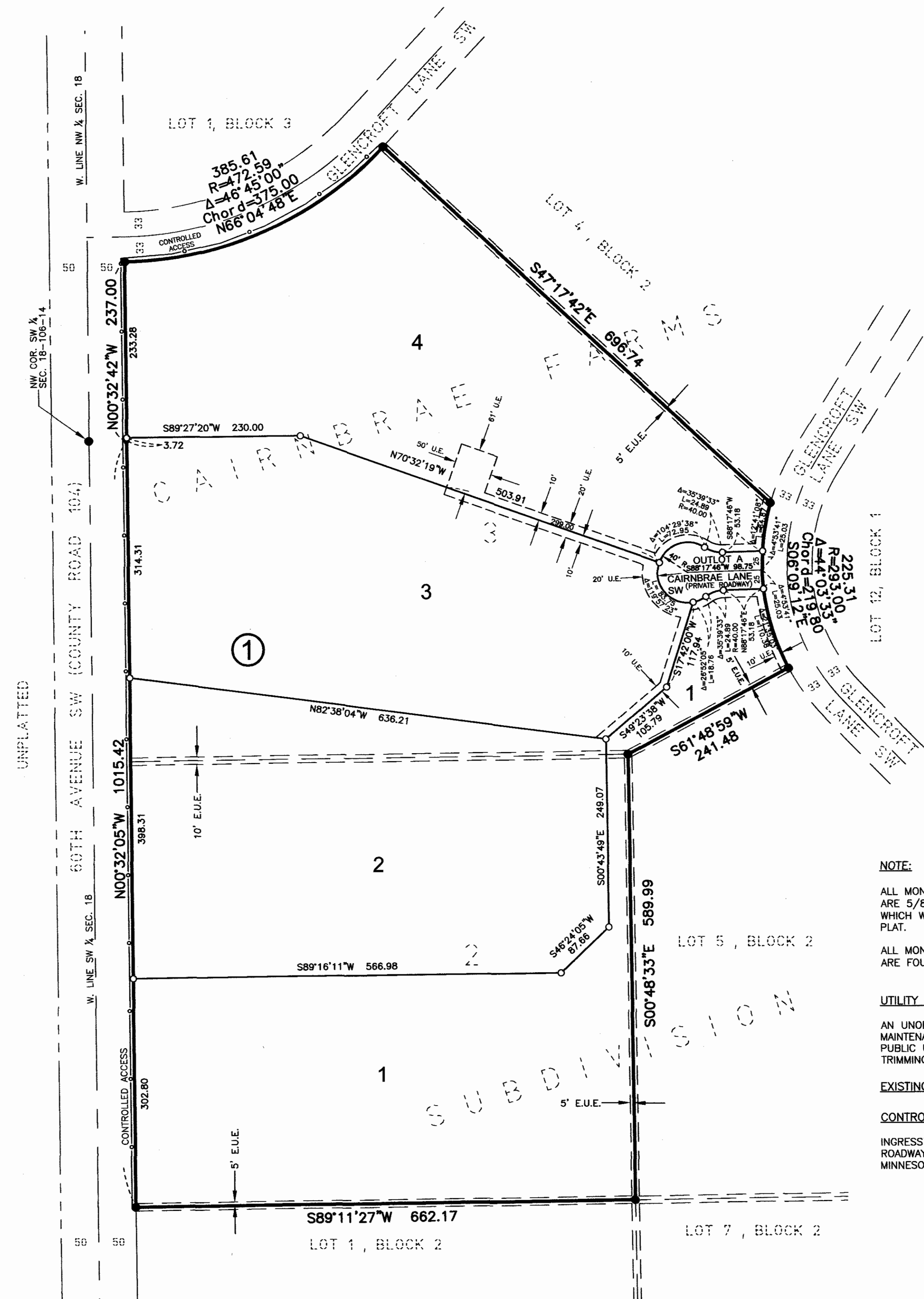
Taxes payable in the year 2012 on the land described herein have been paid, there are no delinquent taxes and transfer has been entered this 14th day of August, 2012.

DOCUMENT NUMBER A-1296296

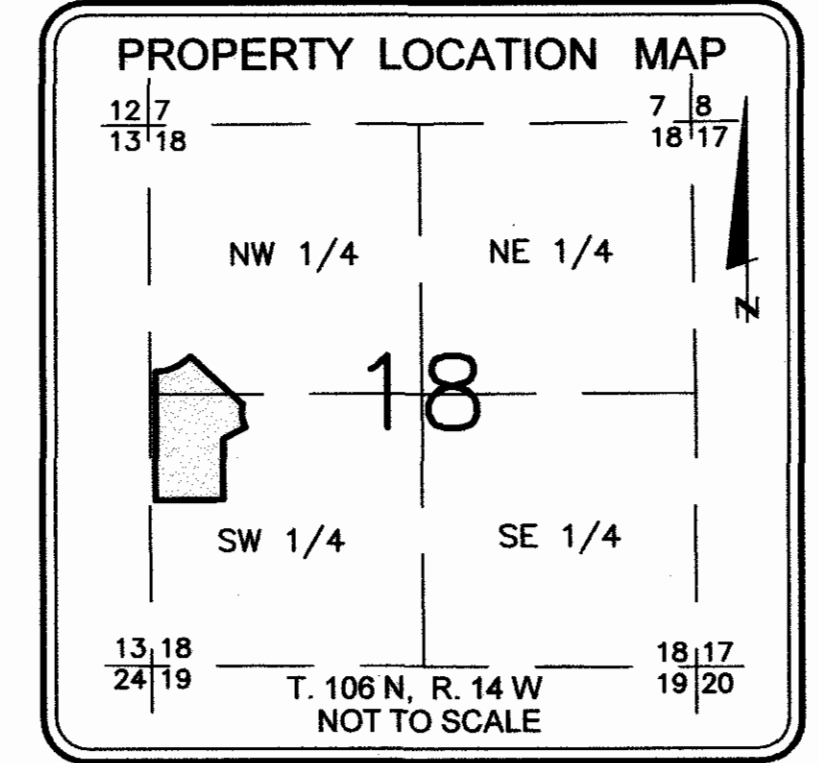
I hereby certify that this instrument was filed in the Office of Property Records and Licensing for the record on this 14th day of August, 2012, at 10:12 o'clock A.M., and was duly recorded in the Olmsted County records.

W. Mark Krupski
Director of Property Records & Licensing

Wendy von Wald
Deputy



BASE OF BEARING SYSTEM :
ALL BEARINGS ARE IN RELATIONSHIP WITH THE
WEST LINE OF THE SW 1/4 OF SEC. 18-106-14
WHICH IS ASSUMED TO BE N00°32'05\"W.



NOTE:
ALL MONUMENTS SHOWN THUS: ○
ARE 5/8" I.D. CAPPED PIPES WITH LICENSE NO. 18887
WHICH WILL BE SET WITHIN 1 YEAR AFTER RECORDING OF THIS
PLAT.
ALL MONUMENTS SHOWN THUS: ●
ARE FOUND 5/8" PIPES UNLESS OTHERWISE NOTED.

UTILITY EASEMENT (U.E.) DEFINED:
AN UNOBSTRUCTED EASEMENT FOR THE CONSTRUCTION AND
MAINTENANCE OF ALL NECESSARY UNDERGROUND OR SURFACE
PUBLIC UTILITIES, INCLUDING RIGHTS TO CONDUCT DRAINAGE AND
TRIMMING ON SAID EASEMENT.

EXISTING UTILITY EASEMENT (E.U.E.)

CONTROLLED ACCESS DEFINED:
INGRESS OR EGRESS TO, FROM, OR ACROSS THE ABUTTING
ROADWAY IS RESTRICTED BY THE ROAD AUTHORITY PURSUANT TO
MINNESOTA STATE STATUTE 160.08.

1242A

McGhie & Betts, Inc.
1648 Third Avenue S.E.
Rochester, MN 55904
Telephone: 507-289-3919
Fax: 507-289-7333
mbi@mcghiebetts.com

McGhie
(Logo)
Betts, Inc.

Land Surveying
Civil Engineering
Consulting
Land Planning
Geotechnical Engineering
Construction Material Testing
Landscape Architecture

CAIRNBRAE STABLES

OLMSTED COUNTY ENGINEER

Recommended for approval this 31 day of July, 2012.

Michael Huber

Olmsted County
Highway Engineer

McGhie & Betts, Inc. 1648 Third Avenue S.E. Rochester, MN 55904 Telephone: 507-269-3919 Fax: 507-269-7333 mbi@mcghebetts.com	 McGhie & Betts, Inc.	Land Surveying Civil Engineering Consulting Land Planning Geotechnical Engineering Construction Material Testing Landscape Architecture
---	--	---