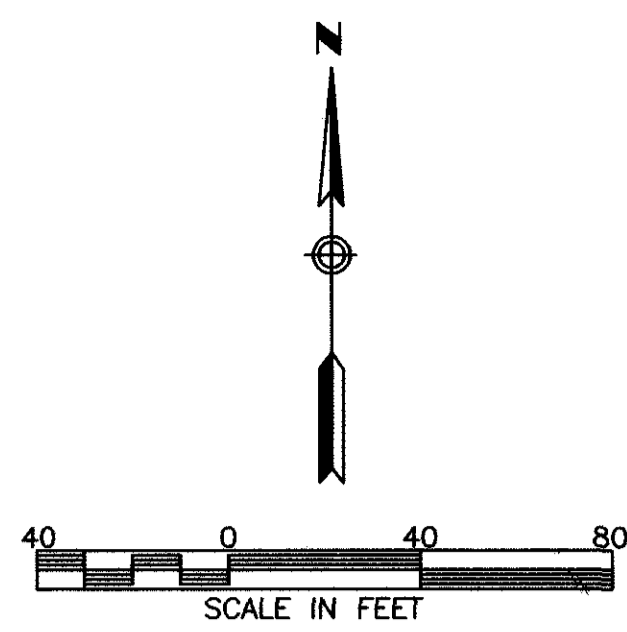


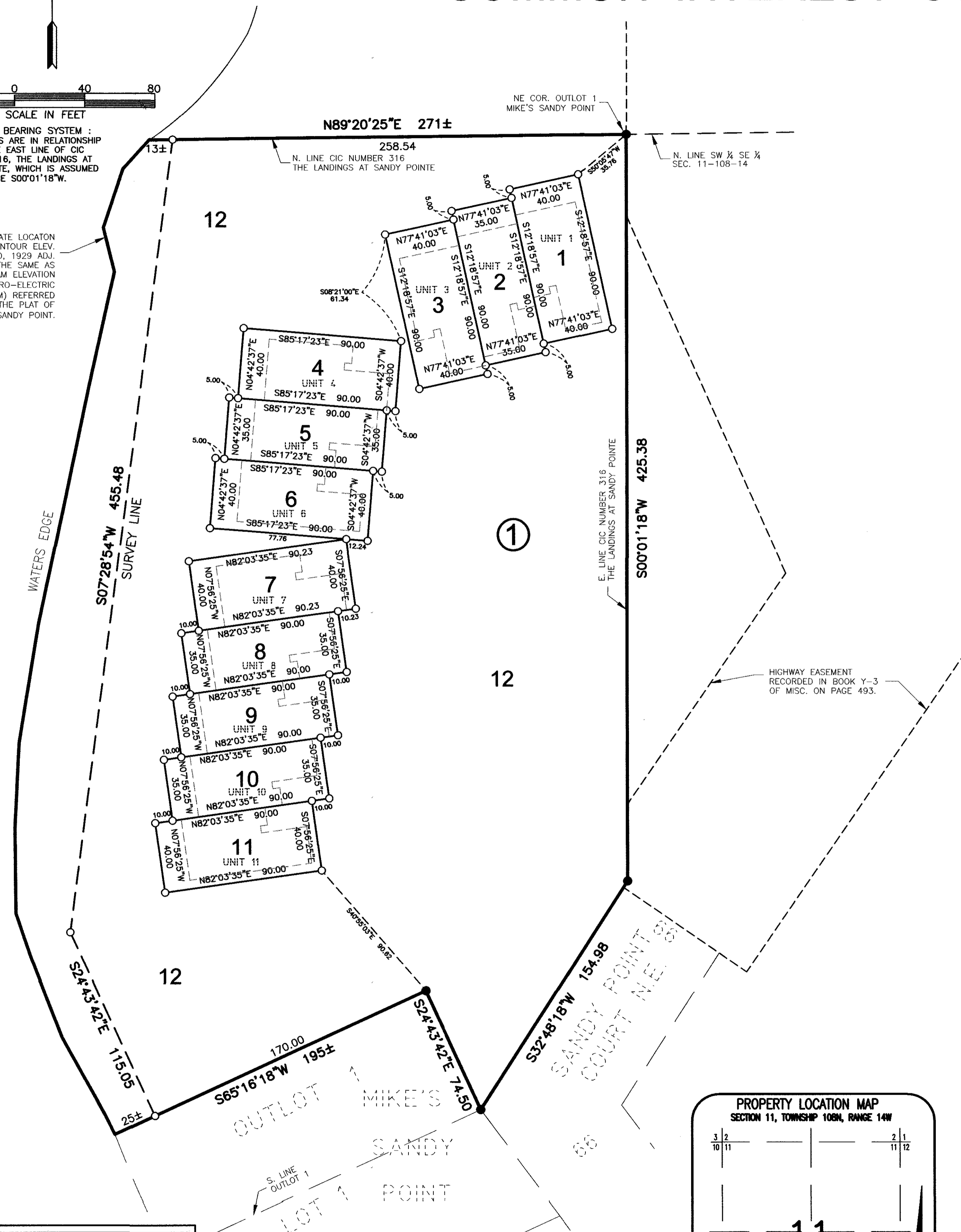
# THE LANDINGS ON THE LAKE COMMON INTEREST COMMUNITY NUMBER 352



BASIS OF BEARING SYSTEM : ALL BEARINGS ARE IN RELATIONSHIP WITH THE EAST LINE OF CIC NUMBER 316, THE LANDINGS AT SANDY POINT, WHICH IS ASSUMED TO BE S00°01'18"W.

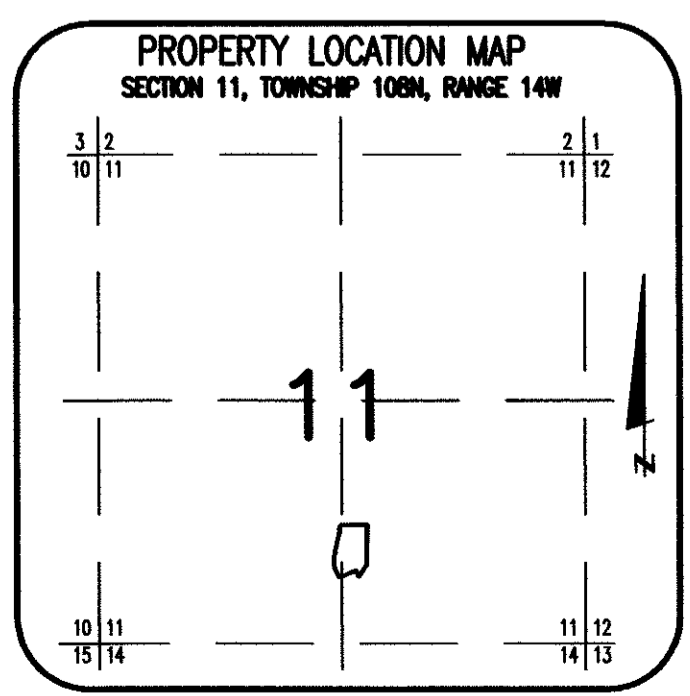
APPROXIMATE LOCATION OF CONTOUR ELEV. 914.6 NGVD, 1929 ADJ. THIS IS THE SAME AS TOP OF DAM ELEVATION 920 (HYDRO-ELECTRIC DAM DATUM) REFERRED TO ON THE PLAT OF MIKE'S SANDY POINT.

LAKE ZUMBRO  
TOP OF WATER ELEV. ON 1-20-05 = 914.2



**B.M. ELEV. 956.56**  
(NGVD, 1929 ADJ.)  
BRASS DISC AT S.E. COR. OF C.S.A.H. NO. 12 BRIDGE OVER LAKE ZUMBRO

**NOTE:**  
ALL MONUMENTS SHOWN THUS: ○ ARE 5/8" I.D. CAPPED PIPES WITH LICENSE NO. 18887 WHICH WILL BE SET WITHIN 1 YEAR AFTER RECORDING OF THIS PLAT.  
ALL MONUMENTS SHOWN THUS: ● ARE FOUND 5/8" PIPES UNLESS OTHERWISE NOTED.



KNOW ALL MEN BY THESE PRESENTS: That Pat Courington, Jr., Personal Representative of the Estate of Chella A. Courington, deceased; Matthew J. Heinz and Diane M. Heinz, husband and wife; Robert R. Rice II, a single person; Darlene A. Weis, Trustee of the Darlene A. Weis Revocable Trust U/A dated October 12, 1999; and The Landings of Oronoco, LLC, a Minnesota limited liability company, owners of the following described property:  
Units 1 through 11 together with all the Common Elements and Limited Common Elements, all within COMMON INTEREST COMMUNITY NUMBER 316 A CONDOMINIUM, THE LANDINGS AT SANDY POINTE, Olmsted County, Minnesota.  
Containing in all, 3.84 acres, more or less.  
Have caused the same to be surveyed and platted as THE LANDINGS ON THE LAKE COMMON INTEREST COMMUNITY NUMBER 352.  
On behalf of the owners, The Landings at Sandy Pointe Association, Inc., a non-profit corporation under the laws of the State of Minnesota, have caused these presents to be signed by its proper officers this 27 day of July, 2012.

Joseph C. Weis  
Joseph C. Weis, President  
Matthew J. Heinz  
Matthew J. Heinz, Secretary

STATE OF MINNESOTA  
COUNTY OF OLMTSTED  
This instrument was acknowledged before me on July 27, 2012 by Joseph C. Weis and Matthew J. Heinz, the President and Secretary of The Landings at Sandy Pointe Association, Inc., a non-profit corporation under the laws of the State of Minnesota, on behalf of the corporation.

Paul M. Ohly  
Notary Public, Olmsted County, Minnesota  
My commission expires 01/31/2015

**SURVEYOR'S CERTIFICATE**  
I Mark E. Severson do hereby certify that this plat was prepared by me or under my direct supervision; that I am a duly Licensed Land Surveyor in the State of Minnesota; that this plat is a correct representation of the boundary survey; that all mathematical data and labels are correctly designated on this plat; that all monuments depicted on this plat have been, or will be correctly set within one year; that all water boundaries and wet lands, as defined in Minnesota Statutes, Section 505.01, Subd. 3, as of the date of this certificate are shown and labeled on this plat; and all public ways are shown and labeled on this plat.  
Dated this 27 day of JULY, 2012.  
Mark E. Severson  
Mark E. Severson, Professional Surveyor  
Minnesota License No. 18887

STATE OF MINNESOTA  
COUNTY OF OLMTSTED  
The instrument was acknowledged before me on July 27, 2012 by Mark E. Severson.  
Beverly E. Delisle  
Beverly E. Delisle, Notary Public, Olmsted County, Minnesota  
My commission expires Jan. 31, 2015

**OLMTSTED COUNTY SURVEYOR**  
I hereby certify that in accordance with Minnesota Statutes, Section 505.021, Subd. 11, this plat has been reviewed and approved this 27 day of JULY, 2012.  
Paul S. Thorsson  
Olmsted County Surveyor  
**OLMTSTED COUNTY ENVIRONMENTAL COMMISSION**  
The Olmsted County Environmental Commission has approved the plans for the water supply and sewage treatment for the plat.  
Rickard Alwes  
Olmsted County Environmental Specialist

**ORONOCO TOWNSHIP BOARD APPROVAL**  
We hereby certify that on the 2 day of July, 2012 the Board of Supervisors for Oronoco Township, Olmsted County, Minnesota, approved this plat.  
Paul M. Stiles  
Supervisor  
Judith Hagedorn  
Town Clerk

**OLMTSTED COUNTY BOARD APPROVAL**  
State of Minnesota  
County of Olmsted  
I do hereby certify that the accompanying plat was duly approved by the Olmsted County Board of Commissioners at a meeting held on the 24 day of JULY, 2012.  
Kenneth Brown  
Olmsted County Board Chairman

**PROPERTY RECORDS AND LICENSING**  
Taxes payable in the year 2012 on the land described herein have been paid, there are no delinquent taxes and transfer has been entered this 27th day of July, 2012.  
DOCUMENT NUMBER A-1294734  
I hereby certify that this instrument was filed in the Office of Property Records and Licensing for the record on this 27th day of July, 2012, at 2 1/2 o'clock P.M., and was duly recorded in the Olmsted County records.  
W. Mark Krupski  
Director of Property Records & Licensing  
Wendy von Wald  
Deputy

**McGhie & Betts, Inc.**  
1648 Third Avenue S.E.  
Rochester, MN 55904  
Telephone: 507-289-3919  
Fax: 507-289-7333  
mbi@mcghiebetts.com

**McGhie**  
Land Surveying  
Civil Engineering  
Consulting  
Land Planning  
Geotechnical Engineering  
Construction Material Testing  
Landscape Architecture

**Betts, Inc.**

# 1238A

10400/12172

OFFICIAL PLAT

THE LANDINGS ON THE LAKE  
COMMON INTEREST COMMUNITY NUMBER 352

OLMSTED COUNTY ENGINEER

Recommended for approval this 27<sup>th</sup> day of July, 2012.

Kaye M. Bienick  
Olmsted County  
Asst Highway Engineer

1238A

McGhie & Betts, Inc. 1040 Third Avenue S.E. Rochester, MN 55904 Telephone: 507-289-2919 Fax: 507-289-7333 mbl@mcghebetts.com	 McGhie Betts, Inc.	Land Surveying Civil Engineering Consulting Land Planning Geotechnical Engineering Construction Material Testing Landscape Architecture
---	--	---