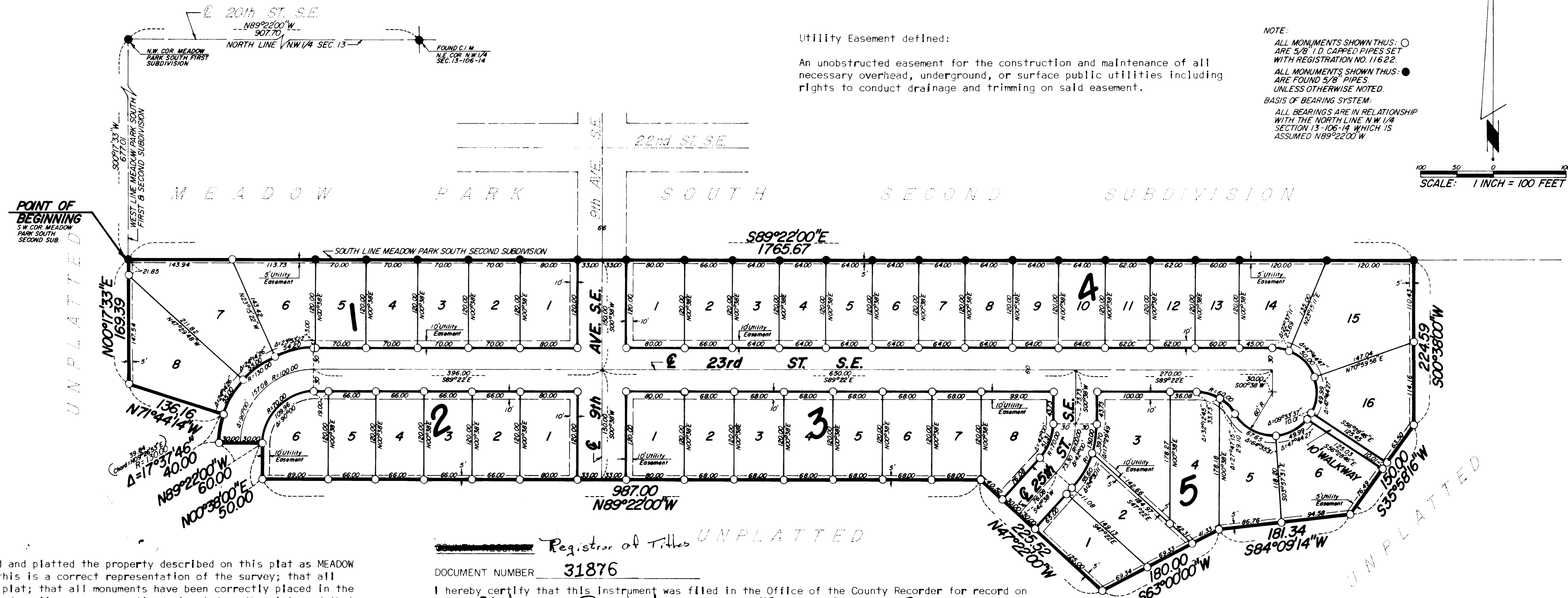


# MEADOW PARK SOUTH FOURTH SUBDIVISION

ROCHESTER, MINNESOTA



Utility Easement defined:

An unobstructed easement for the construction and maintenance of all necessary overhead, underground, or surface public utilities including rights to conduct drainage and trimming on said easement.

NOTE:  
ALL MONUMENTS SHOWN THUS: ○ ARE 5/8" I.D. CARPET PIPES SET WITH REGISTRATION NO. 11622  
ALL MONUMENTS SHOWN THUS: ● ARE FOUND 5/8" PIPES UNLESS OTHERWISE NOTED.  
BASIS OF BEARING SYSTEM:  
ALL BEARINGS ARE IN RELATIONSHIP WITH THE NORTH LINE NW 1/4 SECTION 13-106-14 WHICH IS ASSUMED N89°22'00" W

SCALE: 1 INCH = 100 FEET

I hereby certify that I have surveyed and platted the property described on this plat as MEADOW PARK SOUTH FOURTH SUBDIVISION; that this is a correct representation of the survey; that all distances are correctly shown on the plat; that all monuments have been correctly placed in the ground as shown; that the outside boundary lines are correctly designated on the plat; and that there are no wet lands or public highways to be designated on said plat other than as shown thereon.

James E. Swanson  
James E. Swanson, R.L.S.  
Minnesota Registration No. 11622

State of Minnesota  
County of Olmsted

The surveyor's certificate was subscribed and sworn to before me, a Notary Public this 27<sup>th</sup> day of August, 1979.

Howard E. Hunt  
Notary Public, Olmsted County, Minnesota  
My commission expires Dec. 9, 1985

I certify that this plat has been checked mathematically and that the plat conforms to the applicable platting laws, this 4<sup>th</sup> day of Sept., 1979.

Roger W. Brand  
Olmsted County Surveyor

State of Minnesota  
County of Olmsted  
City of Rochester

I, Carole A. Grimm, City Clerk in and for the City of Rochester, do hereby certify that on the 12 day of September, 1979, the accompanying plat was duly approved by the Common Council of the City of Rochester. In testimony thereof I have hereunto signed my name and affixed the seal of said City of Rochester this 18 day of September, 1979.

Carole A. Grimm  
City Clerk, City of Rochester

Register of Titles UNPLATTED

DOCUMENT NUMBER 31876

I hereby certify that this instrument was filed in the Office of the County Recorder for record on this 21<sup>st</sup> day of September, 1979, at 2 o'clock P.M., and was duly recorded in the Olmsted County records.

By Law Finster Registrar of Titles and Loraine C. Judgen Deputy

No delinquent taxes due and transfer entered this 20<sup>th</sup> day of September, 1979.

Ross Browning by Melissa Nelson, Deputy  
County Auditor

Owner's Dedication Continued

State of Minnesota  
County of Olmsted

The foregoing instrument was acknowledged before me this 28 day of August, 1979, by H.E. Payne, Chairman, and H.W. Hodge, President, officers of The Kruse Company, on behalf of the corporation.

Gary L. Shaw  
Notary Public, Olmsted County, Minnesota  
My commission expires Jan. 22, 1982

The Mayo Foundation

R. C. Roesler R.C. Roesler, Vice Chairman and Gregg S. Orwoll Gregg S. Orwoll, Secretary

State of Minnesota  
County of Olmsted

The foregoing instrument was acknowledged before me this 30<sup>th</sup> day of August, 1979, by R.C. Roesler, Vice Chairman, and Gregg S. Orwoll, Secretary, officers of the Mayo Foundation, on behalf of the corporation.

Rick F. Colvin  
Notary Public, Olmsted County, Minnesota  
My commission expires 2/1/80

Owner's Dedication:

KNOW ALL MEN BY THESE PRESENTS: That The Kruse Company and the Mayo Foundation, a Minnesota corporation, owners and proprietors, of the following described property situated in the City of Rochester, State of Minnesota to wit:

A part of the North One Half of Section 13, Township 106 North, Range 14 West, described as follows:

Commencing at the northeast corner of the Northwest Quarter of said Section 13; thence North 89 degrees 22 minutes 00 seconds West, assumed bearing, along the north line thereof, 907.70 feet to the northwest corner of Meadow Park South First Subdivision; thence South 00 degrees 17 minutes 33 seconds West, along the west line of Meadow Park South First Subdivision and Meadow Park South Second Subdivision, 677.01 feet to the southwest corner of said Meadow Park South Second Subdivision for a point of beginning; thence South 89 degrees 22 minutes 00 seconds East, along the south line of Meadow Park South Second Subdivision, 1765.67 feet; thence South 00 degrees 38 minutes 00 seconds West, 224.59 feet; thence South 35 degrees 58 minutes 16 seconds West, 150.00 feet; thence South 84 degrees 09 minutes 14 seconds West, 181.34 feet; thence South 63 degrees 00 minutes 00 seconds West, 180.00 feet; thence North 47 degrees 22 minutes 00 seconds West, 225.52 feet; thence North 89 degrees 22 minutes 00 seconds West, 987.00 feet; thence North 00 degrees 38 minutes 00 seconds East, 50.00 feet; thence North 89 degrees 22 minutes 00 seconds West, 60.00 feet; thence northeasterly, 40.00 feet, along a nontangential curve, concave to the southeast, central angle of 17 degrees 37 minutes 46 seconds, radius of 130.00 feet, and chord of said curve bears North 09 degrees 26 minutes 53 seconds East, 39.84 feet; thence North 71 degrees 44 minutes 14 seconds West, radially to the last described curve, 136.16 feet; thence North 00 degrees 17 minutes 33 seconds East, 169.39 feet to the point of beginning.

Containing 12.67 acres.

Have caused the same to be surveyed and platted as MEADOW PARK SOUTH FOURTH SUBDIVISION and do hereby donate and dedicate to the public, for the public use forever the streets, walkway and avenue and grant the easements as shown on this plat. In witness whereof said The Kruse Company has caused these presents to be signed by its proper officers and its corporate seal to be hereunto affixed this 28<sup>th</sup> day of August, 1979. In witness whereof said The Mayo Foundation has caused these presents to be signed by its proper officers and its corporate seal to be hereunto affixed this 30<sup>th</sup> day of August, 1979.

The Kruse Company

H.E. Payne H.E. Payne, Chairman and H.W. Hodge H.W. Hodge, President

OFFICIAL PLAT

PREPARED BY:  
McGHEE & BETTS, INC.  
CONSULTING ENGINEERS  
ROCHESTER, MINNESOTA