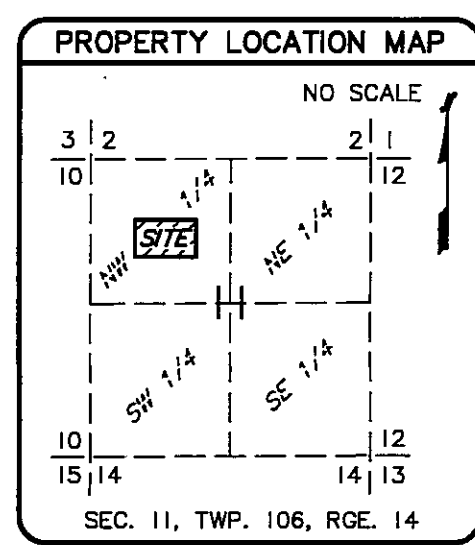
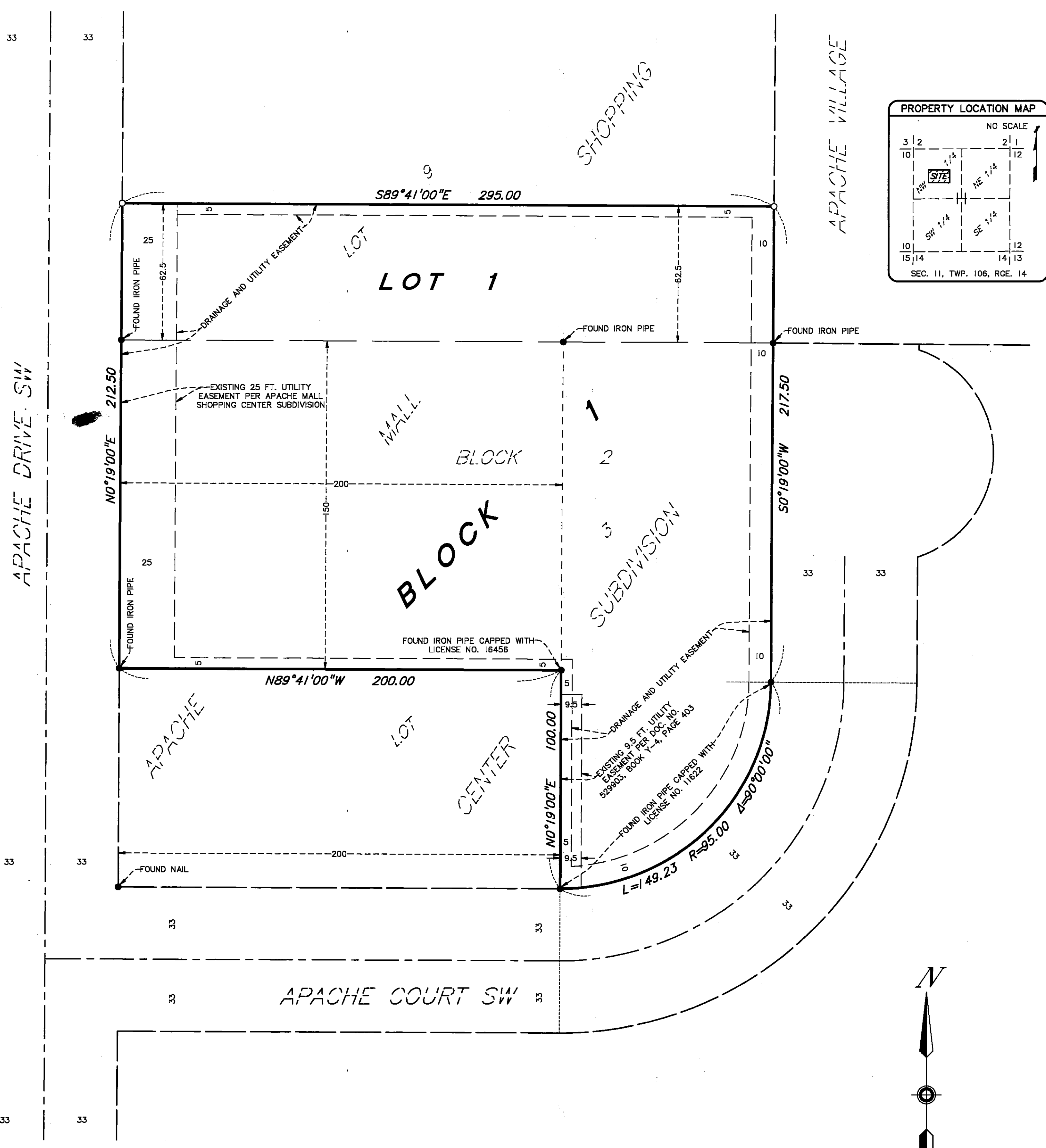


MCDONALDS ADDITION



INSTRUMENT OF DEDICATION

KNOW ALL MEN BY THESE PRESENTS: That McDonald's USA, LLC., a Delaware limited liability company, owner and proprietor of the following described property situated in the City of Rochester, State of Minnesota, to wit:

- The North 150 feet of the West 200 feet of Lot 3, Block 2, Apache Mall Shopping Center Subdivision, according to the recorded plat thereof.
- And
- Lot 3, less the West 200 feet thereof, Block 2, Apache Mall Shopping Center Subdivision, City of Rochester, Olmsted County, Minnesota.
- And
- The south 62.50 feet of Lot 9, Block 2, Apache Mall Shopping Center Subdivision, according to the recorded plat thereof, Olmsted County, Minnesota.

Has caused the same to be surveyed and platted as MCDONALDS ADDITION and does hereby dedicate to the public for public use the drainage and utility easements as created by this plat.

In witness whereof said McDonald's USA, LLC., a Delaware limited liability company, has caused these presents to be signed by its proper officers this 12th day of August, 2011.

McDonald's USA, LLC.
 SIGNED: Susanna M. Brown its Gen. Counsel By: [Signature] its Counsel

STATE OF Minnesota
 COUNTY OF Dodge

The foregoing instrument was acknowledged before me this 12th day of August, 2011, by Susanna M. Brown the Gen. Counsel and [Signature] the Counsel of said McDonald's USA, LLC., a Delaware limited liability company, on behalf of said company.

[Signature]
MARION R. LEBER
 Notary Public, State of Minnesota #156102
 My Commission Expires: 2/25/15

SURVEYOR'S CERTIFICATE

I hereby certify that I have surveyed and platted the property described on this plat as MCDONALDS ADDITION; that this plat is a correct representation of the boundary survey; that all mathematical data and labels are correctly designated on the plat in feet and hundredths of a foot; that all monuments depicted on the plat have been or will be correctly set within one year as indicated on the plat; that all water boundaries and wet lands as defined in MS 505.01, Subd. 3, existing as of the date of this certification are shown and labeled on the plat; and that all public ways are shown and labeled on the plat.

[Signature]
 Mark S. Hanson, Licensed Land Surveyor
 Minnesota License No. 15480

STATE OF MINNESOTA
 COUNTY OF HENNEPIN

The surveyor's certificate was subscribed and sworn to before me, a Notary Public, this 10th day of AUGUST, 2011.

[Notary Seal]
 SUSAN MARIE TARASAR
 NOTARY PUBLIC-MINNESOTA
 My Commission Expires Jan. 31, 2013

[Signature]
 SUSAN MARIE TARASAR
 Notary Public, Minnesota
 My Commission Expires: JANUARY 31, 2013

COUNTY SURVEYOR

I certify that this plat has been checked mathematically and that the plat conforms to the applicable laws, this 17 day of AUGUST, 2011.

[Signature]
 Joel A. Thorsen
 County Surveyor

CITY APPROVAL

State of Minnesota
 County of Olmsted
 City of Rochester

I, Judy K. Scherr, City Clerk, in and for the City of Rochester, do hereby certify that on the 19th day of JANUARY, 2011, the accompanying plat was duly approved by the Common Council of the City of Rochester. In testimony thereof I have hereunto signed my name and affixed the seal of said City of Rochester this 19th day of AUGUST, 2011.

[Signature]
 City Clerk

PROPERTY RECORDS AND LICENSING

Taxes payable in the year 2011 on the land herein described have been paid, there are no delinquent taxes and transfer has been entered this 23RD day of August, 2011.

DOCUMENT NUMBER A- 1266436

I hereby certify that this instrument was filed in the Office of Property Records and Licensing for the record this 23RD day of August, 2011, at 9:12 o'clock A.M., and was duly recorded in the Olmsted County records.

[Signature]
 Director of Property Records & Licensing
[Signature]
 Deputy

○ DENOTES 1/2 INCH BY 14 INCH IRON MONUMENT SET AND MARKED BY P.L.S. NO. 15480

BASIS OF BEARING SYSTEM:
 ALL BEARINGS ARE IN RELATIONSHIP WITH THE WEST LINE OF LOT 3, BLOCK 2, APACHE MALL SHOPPING CENTER SUBDIVISION WHICH IS ASSUMED TO BE N0°19'00"E.

