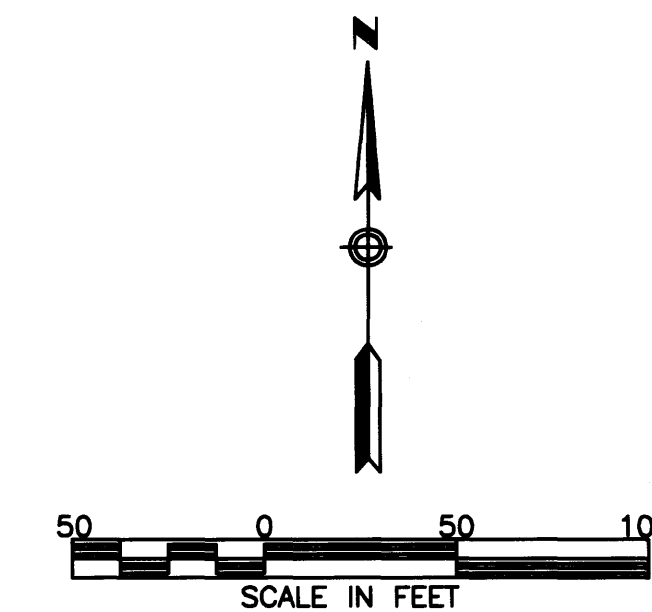


# MORRIS MEADOWS



### SURVEYOR'S CERTIFICATE

I hereby certify that I have surveyed and platted the property described on this plat as MORRIS MEADOWS; that this plat is a correct representation of the boundary survey; that all mathematical data and labels are correctly designated on the plat in feet and hundredths of a foot; that all monuments depicted on the plat have been or will be correctly set within one year as indicated on the plat; that all water boundaries and wet lands as defined in MS 505.01, Subd. 3, existing as of the date of this certification are shown and labeled on the plat; and that all public ways are shown and labeled on the plat.

Mark E. Severson  
Mark E. Severson, L.S.  
Minnesota License Number 18887

State of Minnesota  
County of Olmsted

The surveyor's certificate was subscribed and sworn to before me, a Notary Public, this 19th day of November, 2010.

Beverly E. Delisle  
Notary Public, Olmsted County, Minnesota  
My commission expires Jan. 31, 2015

### COUNTY SURVEYOR

I certify that this plat has been checked mathematically and that the plat conforms to the applicable laws, this 24 day of November, 2010.

Paul S. Severson  
County Surveyor

### CITY APPROVAL

State of Minnesota  
County of Olmsted  
City of Rochester

I, Judy K. Scherr, City Clerk, in and for the City of Rochester, do hereby certify that on the 15th day of November, 2010, the accompanying plat was duly approved by the Common Council of the City of Rochester. In testimony thereof I have hereunto signed my name and affixed the seal of said City of Rochester this 27th day of December, 2010.

Judy K. Scherr  
City Clerk

### PROPERTY RECORDS AND LICENSING

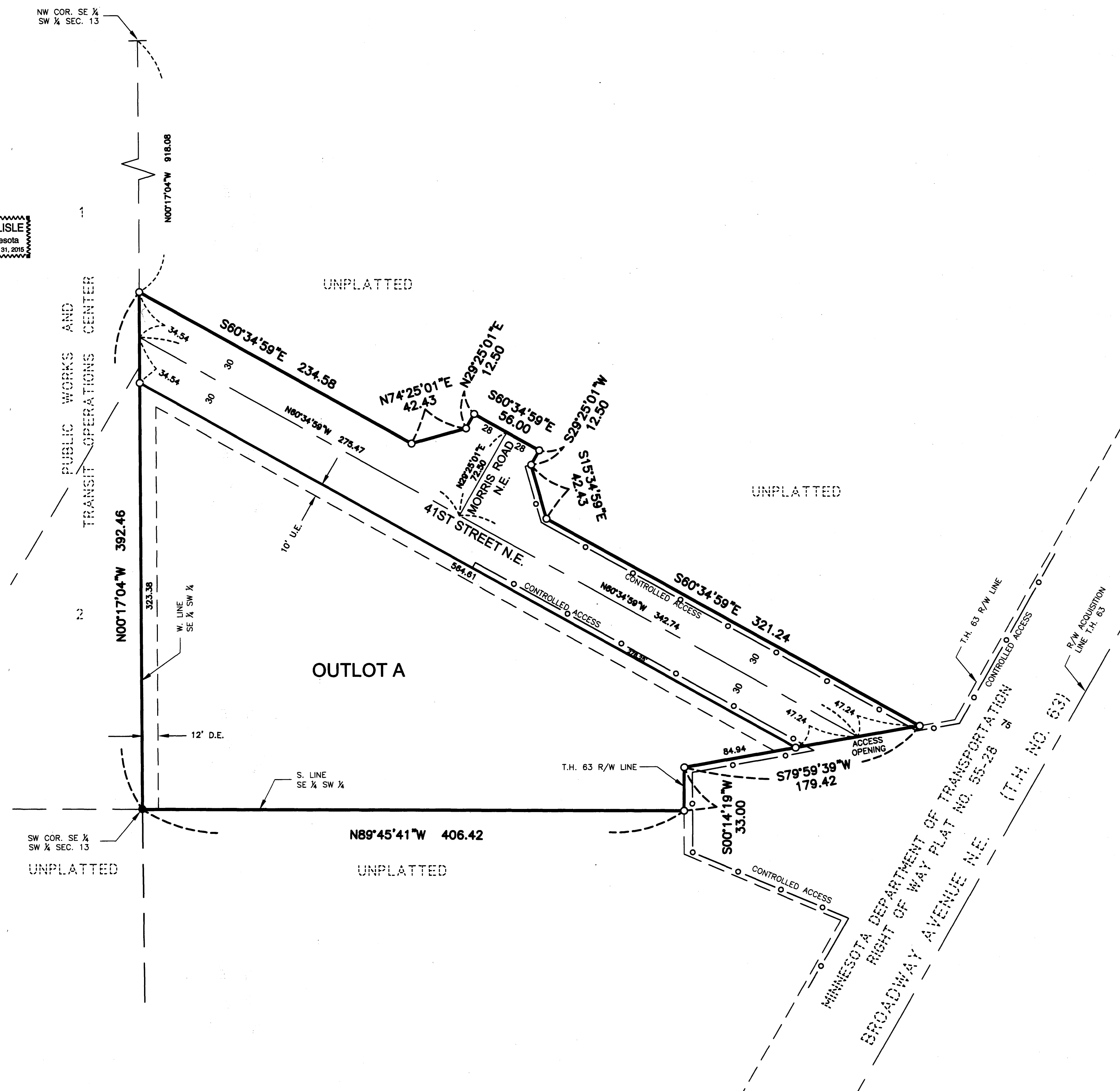
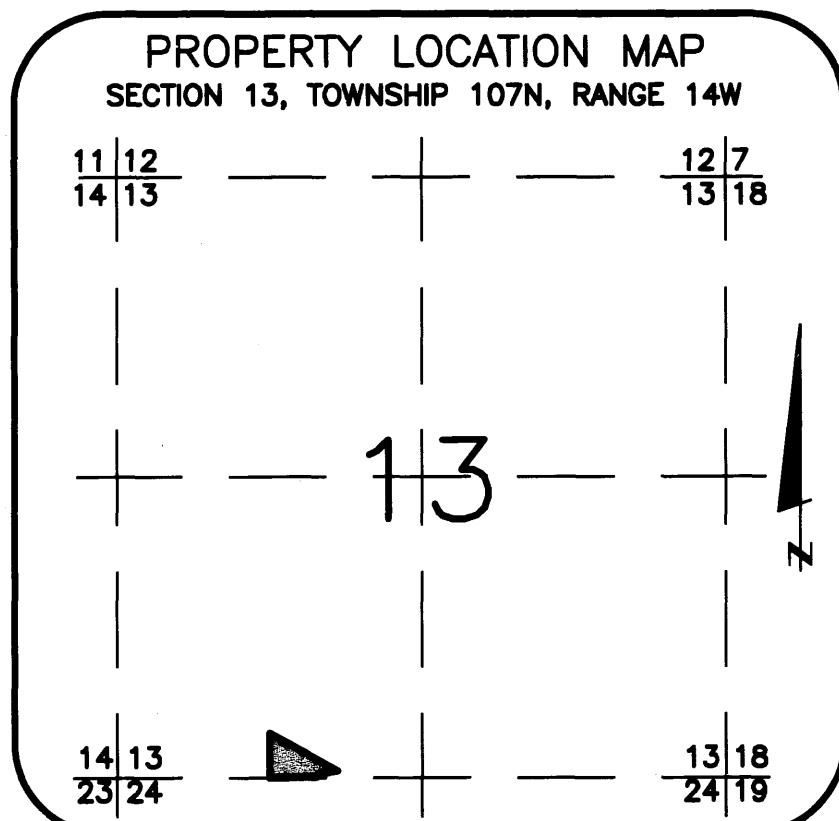
Taxes payable in the year 2010 on the land herein described have been paid, there are no delinquent taxes and transfer has been entered this 28th day of December, 2010.

DOCUMENT NUMBER A-1249413

I hereby certify that this instrument was filed in the Office of Property Records and Licensing for the record this 28th day of December, 2010, at 11 o'clock A.M., and was duly recorded in the Olmsted County records.

W. Mark Krupski  
Director of Property Records & Licensing

Wendy von Wald  
Deputy



### INSTRUMENT OF DEDICATION

KNOW ALL MEN BY THESE PRESENTS: That Morris Memorial LLC, a Minnesota limited liability company, owner and proprietor of the following described property situated in the City of Rochester, State of Minnesota, to wit:

That part of the Southeast Quarter of the Southwest Quarter of Section 13, Township 107 North, Range 14 West, Olmsted County, Minnesota, described as follows:

Beginning at the southwest corner of the Southeast Quarter of the Southwest Quarter of said Section 13; thence North 00 degrees 17 minutes 04 seconds West, assumed bearing, along the west line thereof, 392.46 feet; thence South 60 degrees 34 minutes 59 seconds East, 234.58 feet; thence North 74 degrees 25 minutes 01 second East, 42.43 feet; thence North 29 degrees 25 minutes 01 second East, 12.50 feet; thence South 60 degrees 34 minutes 59 seconds East, 56.00 feet; thence South 29 degrees 25 minutes 01 second West, 12.50 feet; thence South 15 degrees 34 minutes 59 seconds East, 42.43 feet; thence South 60 degrees 34 minutes 59 seconds East, 321.24 feet to the westerly right of way line of Trunk Highway No. 63 as defined on MINNESOTA DEPARTMENT OF TRANSPORTATION RIGHT OF WAY PLAT NO. 55-28; thence South 79 degrees 59 minutes 39 seconds West, along said right of way line, 179.42 feet; thence South 00 degrees 14 minutes 19 seconds West, along said right of way line, 33.00 feet to the south line of said Southeast Quarter of the Southwest Quarter; thence North 89 degrees 45 minutes 41 seconds West, along said south line, 406.42 feet to the point of beginning.

Containing 2.94 acres, more or less.

has caused the same to be surveyed and platted as MORRIS MEADOWS, and does hereby donate and dedicate to the public, for the public use forever, the public ways, and also grants the easements as shown on this plat for drainage and utility purposes only.

In witness whereof said Morris Memorial LLC, a Minnesota limited liability company, has caused these presents to be signed by its proper Officer this 19th day of November, 2010.

By Sharon M. Penz  
Sharon M. Penz, Chief Manager

State of Minnesota  
County of Olmsted

The foregoing instrument was acknowledged before me this 19th day of November, 2010, by Sharon M. Penz, Chief Manager of Morris Memorial LLC, a Minnesota limited liability company, on behalf of the company.

Beverly E. Delisle  
Notary Public, Olmsted County, Minnesota  
My commission expires Jan. 31, 2015

### NOTE:

ALL MONUMENTS SHOWN THUS: ○  
ARE 5/8" I.D. CAPPED PIPES WITH LICENSE NO. 18887 WHICH WILL BE SET WITHIN 1 YEAR AFTER RECORDING OF THIS PLAT.

ALL MONUMENTS SHOWN THUS: ●  
ARE FOUND 5/8" PIPES UNLESS OTHERWISE NOTED.

### UTILITY EASEMENT (U.E.) DEFINED:

AN UNOBSTRUCTED EASEMENT FOR THE CONSTRUCTION AND MAINTENANCE OF ALL NECESSARY UNDERGROUND OR SURFACE PUBLIC UTILITIES, INCLUDING RIGHTS TO CONDUCT DRAINAGE AND TRIMMING ON SAID EASEMENT.

### DRAINAGE EASEMENT (D.E.) DEFINED:

AN UNOBSTRUCTED EASEMENT FOR THE OPERATION AND MAINTENANCE OF ACROSSWAYS, BOTH SURFACE AND UNDERGROUND, RUNNING OVER, ACROSS, AND UNDER SAID EASEMENT.

### CONTROLLED ACCESS DEFINED:

INGRESS OR EGRESS TO, FROM, OR ACROSS THE ABUTTING ROADWAY IS RESTRICTED BY THE ROAD AUTHORITY PURSUANT TO MINNESOTA STATE STATUTE 160.08.

McGhie & Betts, Inc.  
1648 Third Avenue S.E.  
Rochester, MN 55904  
Telephone: 507-289-3919  
Fax: 507-289-7333  
mbi@mcghiebetts.com

**McGhie & Betts, Inc.**

Land Surveying  
Civil Engineering  
Consulting  
Land Planning  
Geotechnical Engineering  
Construction Material Testing  
Landscape Architecture

# 1220A