

# NORTHRIDGE VILLAGE

ROCHESTER, MINNESOTA

I hereby certify that I have surveyed and platted the property described on this plat as NORTHRIDGE VILLAGE; that this is a correct representation of the survey; that all distances are correctly shown on the plat; that all monuments have been correctly placed in the ground as shown; that the outside boundary lines are correctly designated on the plat; that there are no wet lands or public highways to be designated on said plat other than as shown thereon; and that said plat has been previously platted as Block 6, Northridge Second Subdivision.

James E. Swanson  
James E. Swanson, R.L.S.  
Minnesota Registration Number 11622

State of Minnesota  
County of Olmsted

The surveyor's certificate was subscribed and sworn to before me, a Notary Public, this 4<sup>th</sup> day of September 1979.

Howard E. Hunt  
Notary Public, Olmsted County

My commission expires Dec. 9, 1983

No delinquent taxes due and transfer entered this 20<sup>th</sup> day of September 1979.

Ernest Swanson by Melissa Nelson, Deputy  
County Auditor

County Surveyor

I certify that this plat has been checked mathematically and that the plat conforms to the applicable platting laws, this 7<sup>th</sup> day of Sept. 1979.

Roger W. Brand  
Olmsted County Surveyor

State of Minnesota  
County of Olmsted  
City of Rochester

I, Carole A. Grimm, City Clerk in and for the City of Rochester, do hereby certify that on the 17 day of September 1979, the accompanying plat was duly approved by the Common Council of the City of Rochester. In testimony thereof I have hereunto signed my name and affixed the seal of said City of Rochester this 18 day of September 1979.

Carole A. Grimm  
City Clerk

COUNTY RECORDER 418616  
DOCUMENT NUMBER

I hereby certify that this instrument was filed in the Office of the County Recorder for record on this 20 day of September 1979, at 4:12 o'clock P.M., and was duly recorded in the Olmsted County records.

By Leis Finstuen  
County Recorder

Carole M. Baker  
Deputy

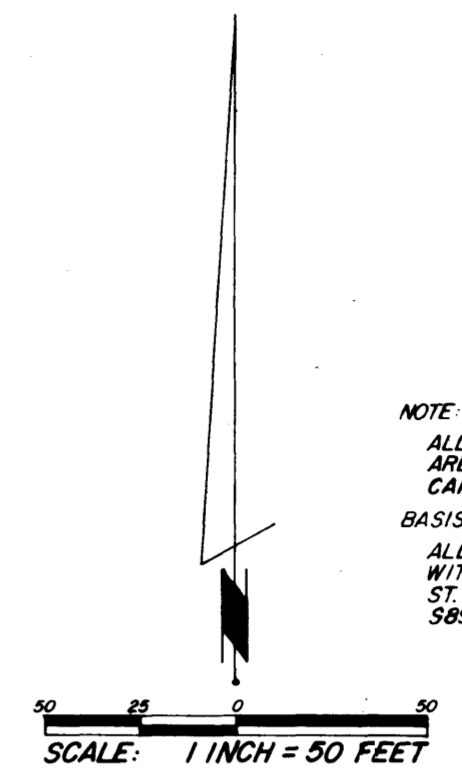
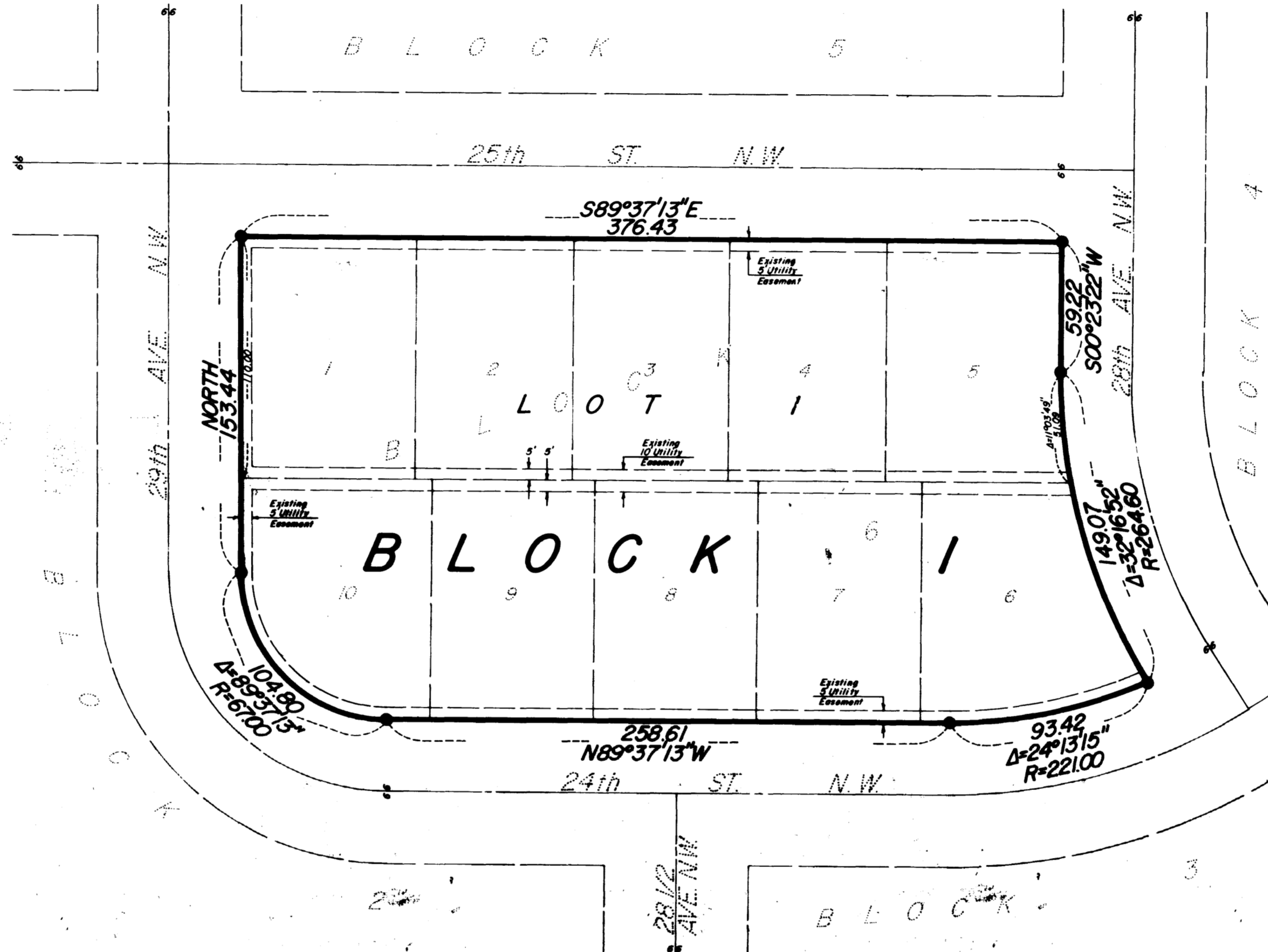
In witness whereof said George Grievé and Estelle Grievé have caused their presents to be signed this 5<sup>th</sup> day of September 1979.

George Grievé Estelle Grievé  
George Grievé Estelle Grievé

State of Minnesota  
County of Olmsted

The foregoing instrument was acknowledged before me this 5<sup>th</sup> day of September 1979 by George Grievé and Estelle Grievé, husband and wife.

Howard E. Hunt  
Notary Public  
My commission expires Dec. 9, 1983



NOTE:  
ALL MONUMENTS SHOWN THIS PLAT ARE FOUND 5/8\"/>

Owner's Dedication

KNOW ALL MEN BY THESE PRESENTS: That Diversified Structures, Inc., a Minnesota Corporation, and Marc F. Carpenter and Helen P. Carpenter, husband and wife, and George Grievé and Estelle Grievé, husband and wife, owners and proprietors of the following described property situated in the City of Rochester, State of Minnesota to wit:

All of Block 6, Northridge Second Subdivision, as recorded in Olmsted County Recorder's Office.

Have caused the same to be surveyed and platted as NORTHRIDGE VILLAGE.

Diversified Structures, Inc.

In witness whereof said Diversified Structures, Inc. has caused these presents to be signed by its proper officers this 4<sup>th</sup> day of Sept. 1979.

Clark Kilpatrick  
Clark Kilpatrick, President

Dean Drew  
Dean Drew, Secretary-Treasurer

State of Minnesota  
County of Olmsted

The foregoing instrument was acknowledged before me this 4<sup>th</sup> day of September 1979, by Clark Kilpatrick, its President, and Dean Drew, its Secretary-Treasurer, officers of Diversified Structures, Inc. on behalf of the corporation.

Howard E. Hunt  
Notary Public, Olmsted County, Minnesota  
My commission expires Dec. 9, 1983

In witness whereof said Marc F. Carpenter and Helen P. Carpenter have caused these presents to be signed this 6<sup>th</sup> day of September 1979.

Marc F. Carpenter  
Marc F. Carpenter

Helen P. Carpenter  
Helen P. Carpenter

State of Minnesota  
County of Olmsted

The foregoing instrument was acknowledged before me this 6<sup>th</sup> day of September 1979 by Marc F. Carpenter and Helen P. Carpenter, husband and wife.

Howard E. Hunt  
Notary Public  
My Commission expires Dec. 9, 1983

Utility Easement Defined:

An unobstructed easement for the construction and maintenance of all necessary overhead, underground, or surface public utilities including rights to conduct drainage and trimming on said easement.

## OFFICIAL PLAT

PREPARED BY:  
McGHEE & BETTS, INC.  
CONSULTING ENGINEERS  
ROCHESTER, MINNESOTA

NORTHRIDGE VILLAGE