

AIRPORT INDUSTRIAL PARK

DEDICATION:

KNOW ALL MEN BY THESE PRESENTS: that James G. Sullivan, and Anita A. Sullivan, his wife, owners and proprietors of the following described property situated in the County of Olmsted, State of Minnesota, to wit:

A part of the Southwest Quarter of Section 2, Township 105, Range 14 West of the Fifth Principal Meridian, more particularly de-scribed by metes and bounds as follows:

Beginning at the southwest corner of said Southwest Quarter; thence on an assumed bearing of North 00°00'00" East, along the west line of said Southwest Quarter, a distance of 2,136.63 feet; thence South 89°27'10" East, parallel to the north line of said Southwest Quarter, a distance of 1,159.43 feet to a point on the westerly line of Trunk Highway 63; thence South westerly, along said westerly line, a distance of 334.78 feet; along a non-tangential curve concave southeasterly, said curve has a radius of 5,804.58 feet, a central angle of 03°18'16", and the chord of said curve bears South 16°32'26" West; thence South 14°53'18" West, along said westerly line, and tangent to said curve, a distance of 69.08 feet; thence North 75°06'42" West, along said westerly line, a distance of 25.00 feet; thence South 14°53'18" West, along said westerly line, a distance of 920.00 feet; thence South 75°06'42" East, along said westerly line, a distance of 25.00 feet; thence South 14°53'18" West, along said westerly line, a distance of 420.00 feet; thence North 75°06'42" West, along said westerly line, a distance of 35.00 feet; thence South 14°53'18" West, along said westerly line, a distance of 300.00 feet; thence South 75°06'42" East, along said westerly line, a distance of 35.00 feet; thence South 14°53'18" West, along said westerly line, a distance of 155.69 feet; to a point on the south line of said Southwest Quarter; thence South 89°45'12" West, along said south line, a distance of 584.99 feet to the point of beginning.

have caused the same to be surveyed and platted as AIRPORT INDUSTRIAL PARK, and do hereby donate and dedicate to the public for use forever the avenue, and Township Road, and grant the easements defined thereon. In witness whereof we have hereunto set our hands and seal this 13th day of July, 19 79.

James G. Sullivan
James G. Sullivan
Anita A. Sullivan
Anita A. Sullivan

State of Minnesota ss
County of Olmsted

On this 13th day of July, 19 79 before me, a Notary Public, within and for said County and State personally appeared James G. Sullivan and Anita A. Sullivan, his wife, to me personally known to be the persons described in and who executed the foregoing instrument and they affirm and acknowledge that they executed the same as their own free act and deed.

Jean Marie Sandvold
JEAN MARIE SANDVOLD
NOTARY PUBLIC - MINNESOTA
OLMSTED COUNTY
Notary Public, Olmsted County, Minnesota
My commission expires Jan. 23, 1985

Surveyor's Certificate

State of Minnesota ss
County of Olmsted

I do hereby certify that I have surveyed and platted the property described on this plat as AIRPORT INDUSTRIAL PARK, Olmsted County, Minnesota, that this plat is a correct representation of said survey; that all distances are correctly shown on said plat in feet and decimals of a foot; that all monuments have been correctly placed in the ground as shown on the plat; that the outside boundary lines are correctly designated on the plat; and that there are no wet lands or public highways to be designated on said plat other than as shown thereon.

Richard F. Kautler
Surveyor
Minnesota Registration No. 2006

State of Minnesota ss
County of Olmsted

The above Surveyor's Certificate was subscribed and sworn to before me, a notary public within and for said county and state on this 20th day of July, 19 79.

Donovan L. Boell
Notary Public, Olmsted County, Minnesota
My Commission expires Apr. 1, 1986

Donovan L. Boell
NOTARY PUBLIC - MINNESOTA
OLMSTED COUNTY
My Commission Expires Apr. 1, 1986

Controlled Access Defined

Egress or Ingress to, from or across the abutting roadway is restricted by the road authority pursuant to Minnesota State Statute 160.08.

UTILITY EASEMENTS DEFINED

An unobstructed easement for the construction and maintenance of all necessary overhead, underground or surface, public utilities including rights to conduct drainage and trimming on said easement.

We, the members of the Township Board of Supervisors for High Forest Township, Olmsted County, Minnesota, do hereby certify that we have approved the accompanying plat, in testimony whereof we have signed our names this 13th day of July, 19 79.

Harley Bretcher Chairman
Charles Louch Supervisor
Robert Engel Supervisor

We, the members of the Olmsted County Planning Advisory Commission do hereby certify that we have examined the plat as shown, and find that it conforms to the provisions of the Subdivision Ordinance of the County of Olmsted.

Gene J. Wallace
Commission Chairman

The Olmsted County Board of Health has approved this plat for water supply and sewage disposal systems.

[Signature]
County Public Health Engineer

Recommended for approval this 26 day of July, 19 79.

[Signature]
Olmsted County Highway Engineer

I certify that this plat has been checked mathematically and that the plat conforms to the applicable platting laws.

Approved this 24th day of July, 19 79.

By Roger W. Brand
Olmsted County Surveyor

I, Ross Browning, County Auditor in and for said county, do hereby certify that the accompanying plat was duly approved by the Board of County Commissioners at a meeting held on the 11th day of September, 19 79, in testimony whereof, I have signed my name and affixed the seal of said county this 13th day of September, 19 79.

Ross Browning by Nelson Nelson, Deputy
County Auditor

No delinquent taxes and transfer entered this 13th day of September, 19 79.

Ross Browning by Nelson Nelson, Deputy
County Auditor

418354

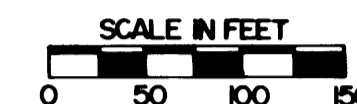
State of Minnesota ss
County of Olmsted

Filed for record this 13th day of September, 19 79, at 11:14 O'clock A.M. in Book _____ of Plats on page. Doc. No. _____

Lois Linstrom
County Recorder

By Nancy Johnson, Deputy

AIRPORT INDUSTRIAL PARK



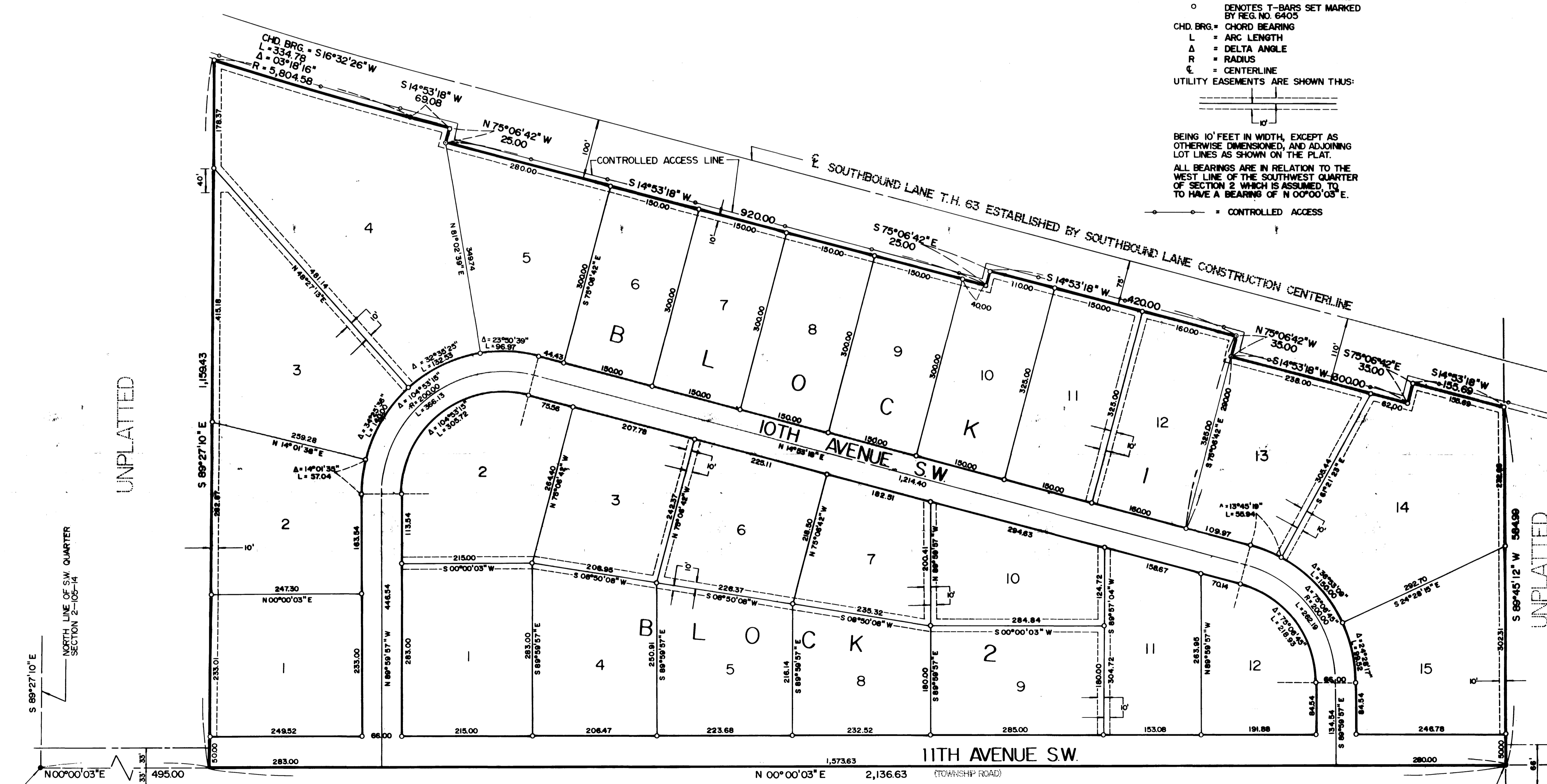
- LEGEND**
- DENOTES MONUMENTS FOUND
 - DENOTES T-BARS SET MARKED BY REG. NO. 6405
 - CHD. BRG. = CHORD BEARING
 - L = ARC LENGTH
 - Δ = DELTA ANGLE
 - R = RADIUS
 - ℄ = CENTERLINE
- UTILITY EASEMENTS ARE SHOWN THUS:
-

BEING 10' FEET IN WIDTH, EXCEPT AS OTHERWISE DIMENSIONED, AND ADJOINING LOT LINES AS SHOWN ON THE PLAT.

ALL BEARINGS ARE IN RELATION TO THE WEST LINE OF THE SOUTHWEST QUARTER OF SECTION 2 WHICH IS ASSUMED TO HAVE A BEARING OF N 00°00'03" E.

—○— = CONTROLLED ACCESS

UNPLATTED



NORTH LINE OF S.W. QUARTER SECTION 2-105-14

S 89°27'10" E 1,159.43

S 89°27'10" E

N 00°00'03" E 495.00

N 00°00'03" E

N 00°00'03" E

N.W. COR. S.W. 1/4, SEC. 2-105-14 (C. I. MONUMENT)

PREPARED BY
WALLACE HOLLAND KASTLER SCHMITZ & CO.
CONSULTING ENGINEERS AND PLANNERS
ROCHESTER, MINNESOTA

UNPLATTED

POINT OF BEGINNING
S.W. COR. S.W. 1/4, SEC. 2-105-14 (C. I. MONUMENT)