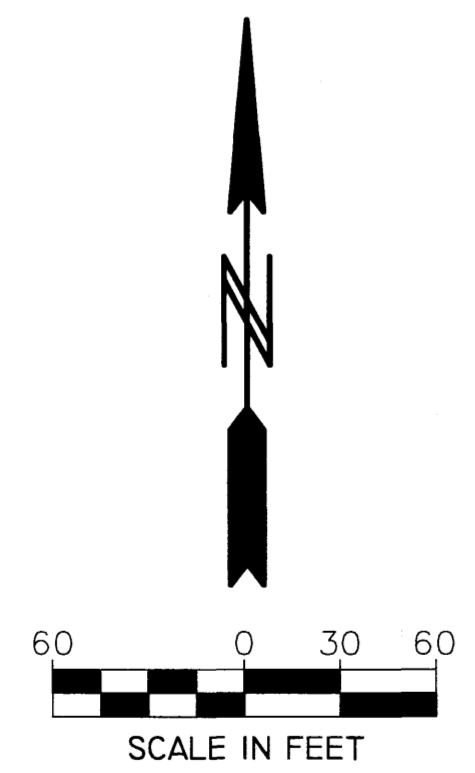
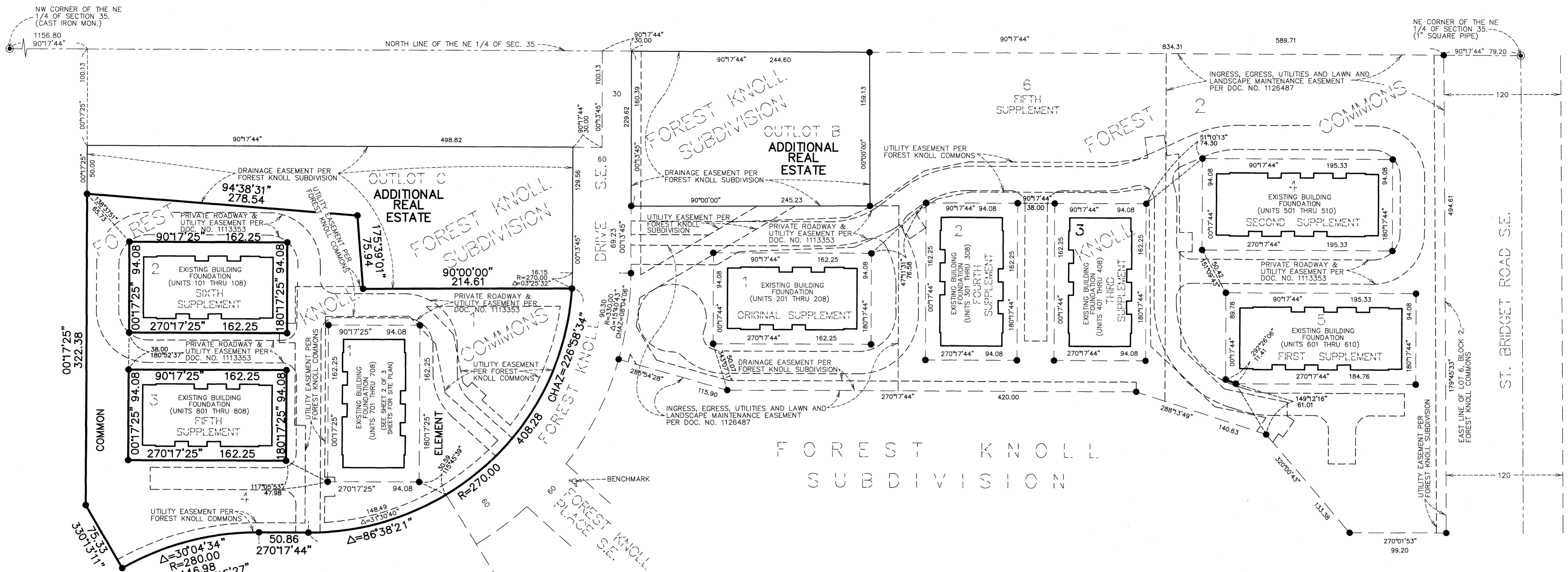


CIC NUMBER 313

A CONDOMINIUM FOREST KNOLL SEVENTH SUPPLEMENTAL CIC PLAT

This SEVENTH SUPPLEMENTAL CIC Plat is part of the Seventh Supplemental Declaration recorded as Document No. A-1190565 on this 18th of February, 2009. W. Mark Krupski, Director of Property Records and Licensing, Wendy von Wald, Deputy.

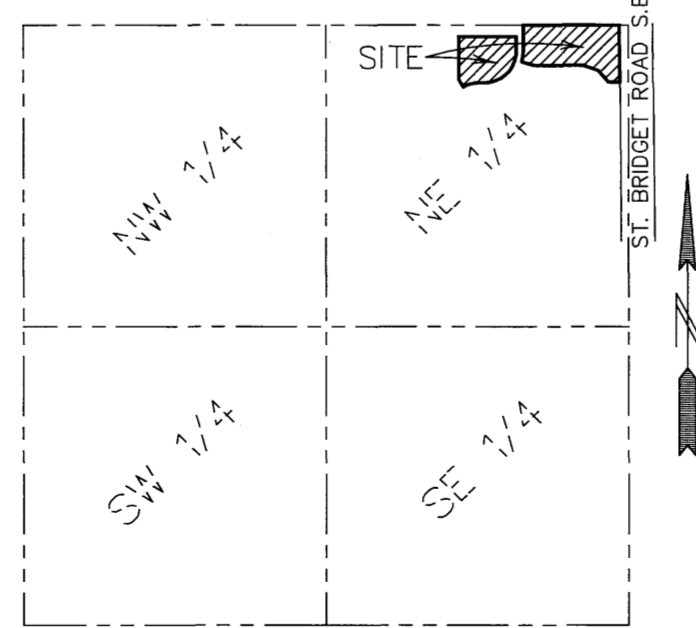


BEARINGS ARE BASED ON THE EAST LINE OF LOT 6, BLOCK 2 FOREST KNOLL COMMONS WHICH IS ASSUMED TO HAVE A STATE PLANE GRID BASED AZIMUTH OF 179°45'33\"/>

● DENOTES FOUND IRON MONUMENT

BENCH MARK: T.N.H. EAST QUADRANT OF FOREST KNOLL DRIVE S.E. AND FOREST KNOLL PLACE S.E. 20 FEET SOUTHEASTERLY OF THE SOUTHWEST CORNER OF LOT 2, BLOCK 1, FOREST KNOLL SUBDIVISION ELEV.=1119.00 FEET (N.G.V.D. 1929).

ALL DRAINAGE AND UTILITY EASEMENTS ARE DEDICATED ON THE PLATS OF FOREST KNOLL SUBDIVISION AND FOREST KNOLL COMMONS.



SECTION 35, TWP. 106, RGE. 14 LOCATION MAP NO SCALE

I, John C. Larson, do hereby certify that the work was undertaken by or reviewed and approved by me for this SEVENTH SUPPLEMENTAL CIC Plat of CIC NUMBER 313, A CONDOMINIUM, FOREST KNOLL, located upon

Lot 1 and 4, Block 1, FOREST KNOLL COMMONS, according to the recorded plat thereof, Olmsted County, Minnesota and the additional real estate described as follows:

Outlots B and C, FOREST KNOLL SUBDIVISION, according to the recorded plat thereof, Olmsted County, Minnesota.

fully and accurately depicts all information required by Minnesota Statutes, Section 515 B. 2-110, as amended.

Dated this 20th day of January, 2009. John C. Larson, Professional Land Surveyor, Minnesota Registration No. 19828.

STATE OF MINNESOTA COUNTY OF Dakota. The foregoing instrument was acknowledged before me this 20th day of January, 2009, by John C. Larson, Registered Professional Land Surveyor.

Notary Public, Dakota County, Minnesota, My Commission Expires 1-31-2010.

I, Peter J. Molinaro, pursuant to Minnesota Statutes, Section 515 B. 2-101 (c), do hereby certify that all structural components of the structures containing the units and the mechanical systems serving more than one unit, but not the units, are substantially completed.

Dated this 20th day of January, 2009. Peter J. Molinaro, Licensed Professional Engineer, Minnesota License No. 12677.

STATE OF MINNESOTA COUNTY OF Dakota. The foregoing instrument was acknowledged before me this 20th day of January, 2009, by Peter J. Molinaro, a Licensed Professional Engineer.

Notary Public, Dakota County, Minnesota, My Commission Expires 1-31-2010.

OLMSTED COUNTY SURVEYOR. Pursuant to Minnesota Statutes, Chapter 389.09, Subd. 2, this CIC plat has been reviewed and approved this 18th day of FEBRUARY, 2009.

By: Joel S. Thoreson, Olmsted County Surveyor.

PROPERTY RECORDS AND LICENSING. I hereby certify that the current and delinquent taxes on the lands described within are paid and the transfer is entered this 18th day of February, 2009.

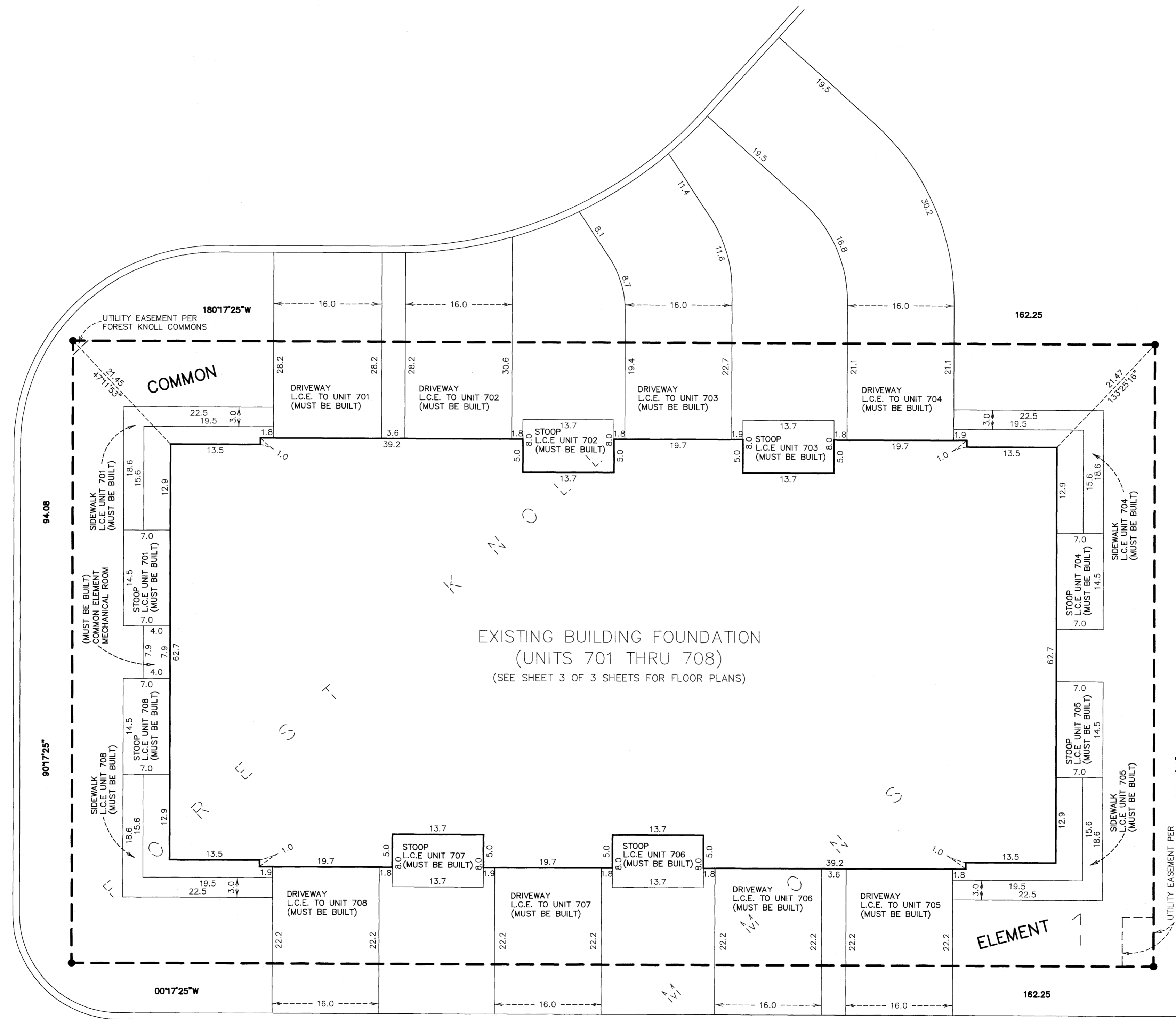
Signed by: W. Mark Krupski, Director of Property Records & Licensing.

Signed by: Wendy von Wald, Deputy.

1187A

CIC NUMBER 313

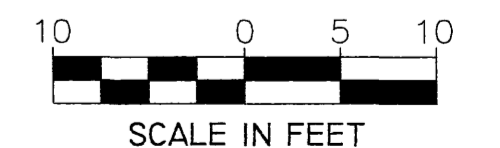
A CONDOMINIUM
FOREST KNOLL
SEVENTH SUPPLEMENTAL CIC PLAT



SITE PLAN

BEARINGS ARE BASED ON THE EAST LINE OF LOT 6, BLOCK 2, FOREST KNOLL COMMONS WHICH IS ASSUMED TO HAVE A STATE PLANE GRID BASED AZIMUTH OF 179°45'33".

● DENOTES FOUND IRON MONUMENT



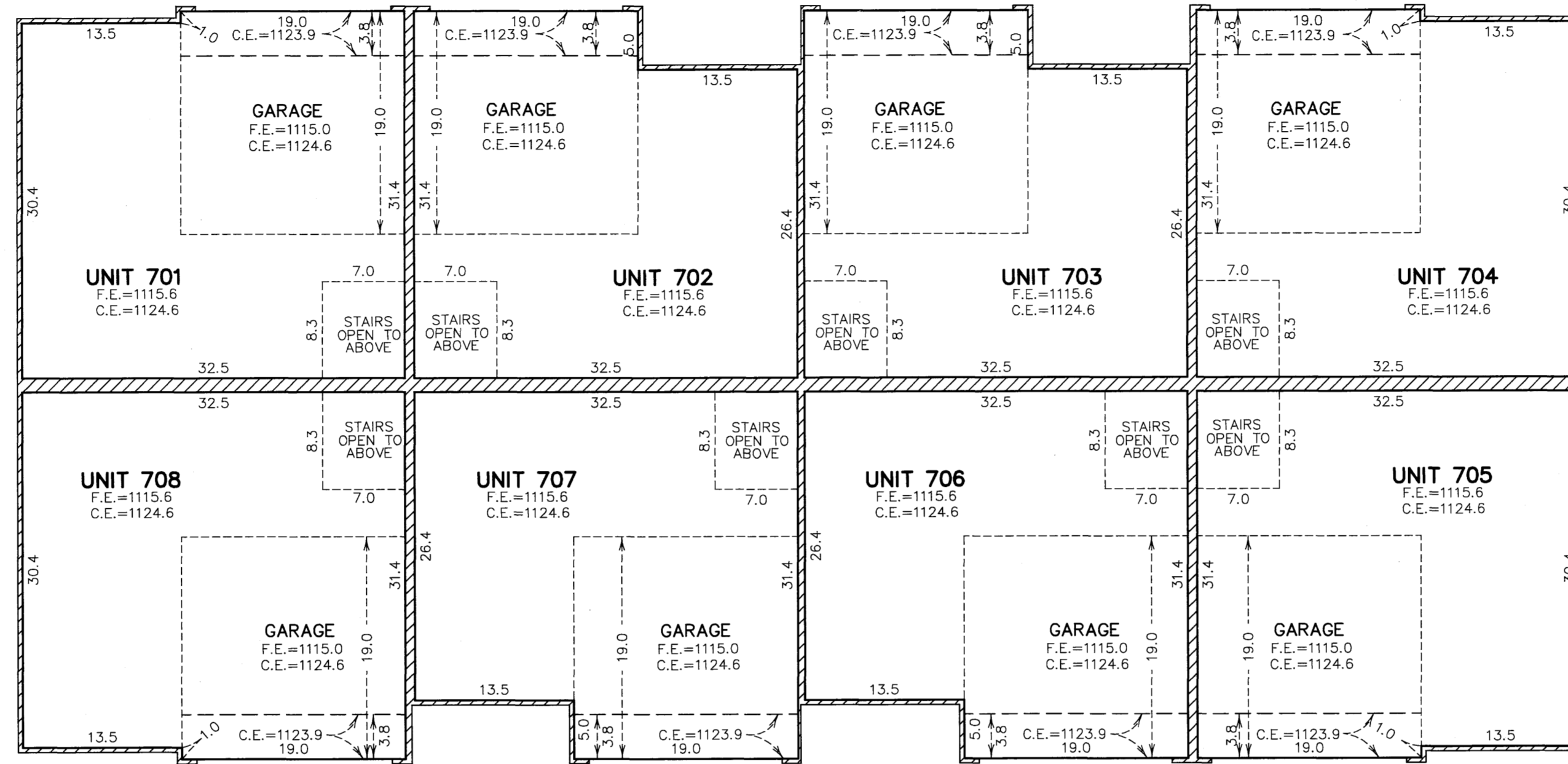
1187B

CIC NUMBER 313

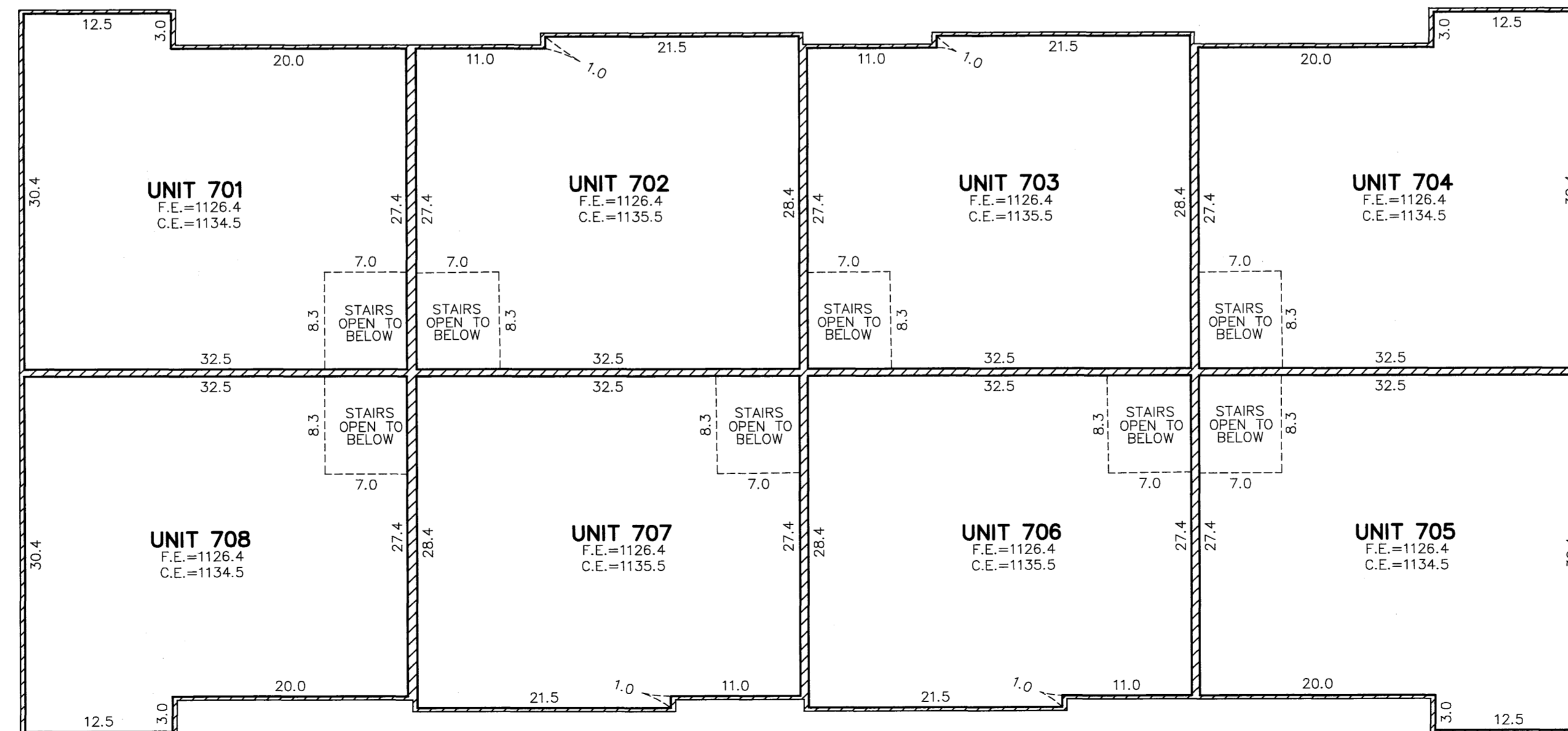
A CONDOMINIUM

FOREST KNOLL

SEVENTH SUPPLEMENTAL CIC PLAT



MAIN LEVEL
(AS-BUILT)



UPPER LEVEL
(AS-BUILT)



C. E. = CEILING ELEVATION
 F. E. = FLOOR ELEVATION
 L. C. E. = LIMITED COMMON ELEMENT
 ELEVATIONS ARE REFERENCED TO A BENCH MARK LISTED ON SHEET 1 OF 3 SHEETS