

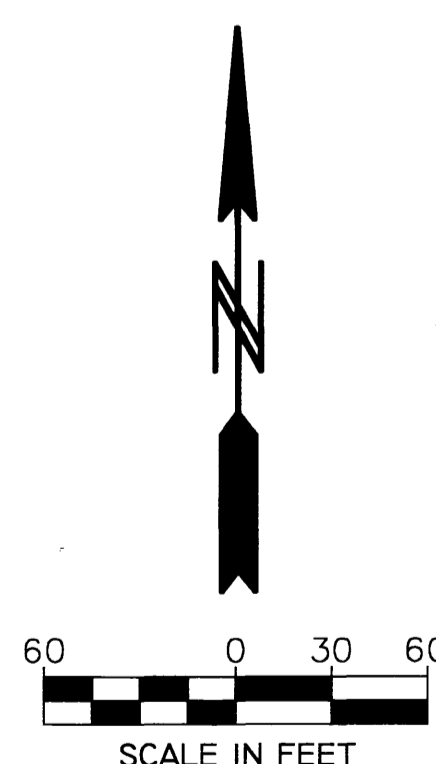
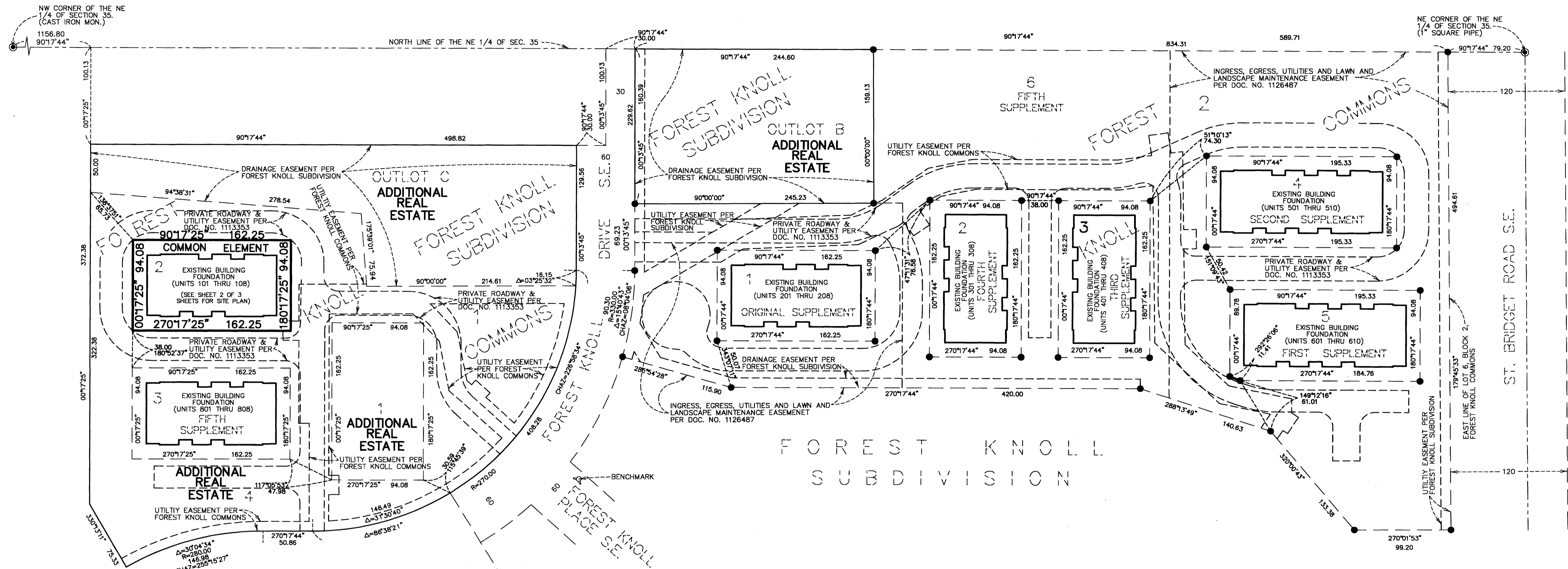
CIC NUMBER 313

A CONDOMINIUM FOREST KNOLL SIXTH SUPPLEMENTAL CIC PLAT

This SIXTH SUPPLEMENTAL CIC Plat is part of the Sixth Supplemental Declaration recorded as Document No. A-1176894 on this 14th of August, 2008.

W. Mark Krupski
Director of Property Records and Licensing

Wendy von Wald
Deputy

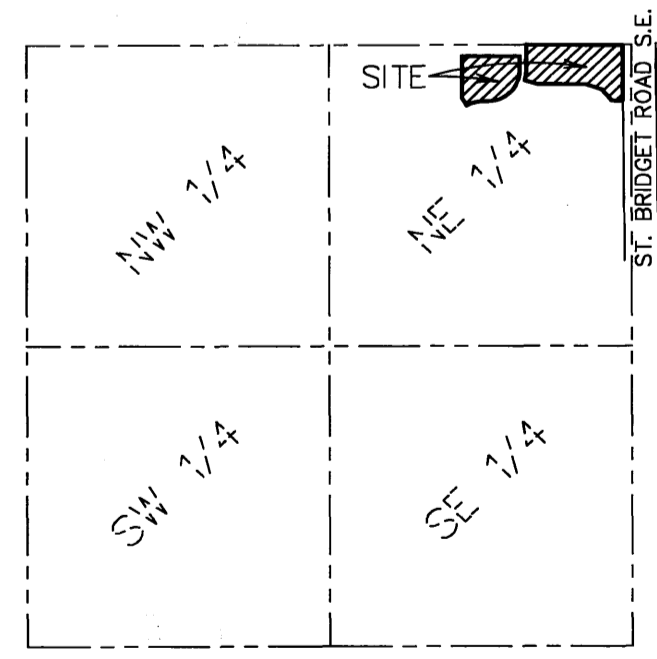


BEARINGS ARE BASED ON THE EAST LINE OF LOT 6, BLOCK 2, FOREST KNOLL COMMONS WHICH IS ASSUMED TO HAVE A STATE PLANE GRID BASED AZIMUTH OF 179°45'33".

● DENOTES FOUND IRON MONUMENT

BENCH MARK: T.N.H. EAST QUADRANT OF FOREST KNOLL DRIVE S.E. AND FOREST KNOLL PLACE S.E. 20 FEET SOUTHEASTERLY OF THE SOUTHWEST CORNER OF LOT 2, BLOCK 1, FOREST KNOLL SUBDIVISION. ELEV.=1119.00 FEET (N.G.V.D. 1929).

ALL DRAINAGE AND UTILITY EASEMENTS ARE DEDICATED ON THE PLATS OF FOREST KNOLL SUBDIVISION AND FOREST KNOLL COMMONS.



SECTION 35, TWP. 106, RGE. 14
LOCATION MAP
NO SCALE

I, John C. Larson, do hereby certify that the work was undertaken by or reviewed and approved by me for this SIXTH SUPPLEMENTAL CIC Plat of CIC NUMBER 313, A CONDOMINIUM, FOREST KNOLL, located upon Lot 2, Block 1, FOREST KNOLL COMMONS, according to the recorded plat thereof, Olmsted County, Minnesota and the additional real estate described as follows:

Lots 1 and 4, Block 1, said FOREST KNOLL COMMONS.

Together with:

Outlots B and C, FOREST KNOLL SUBDIVISION, according to the recorded plat thereof, Olmsted County, Minnesota.

fully and accurately depicts all information required by Minnesota Statutes, Section 515 B. 2-110, as amended.

Dated this 5th day of August, 2008

John C. Larson
John C. Larson, Professional Land Surveyor
Minnesota Registration No. 19823

STATE OF MINNESOTA
COUNTY OF DAKOTA

The foregoing instrument was acknowledged before me this 5th day of August, 2008, by John C. Larson, Registered Professional Land Surveyor.

Nicholas J. Kolsrud
Notary Public Dakota County, Minnesota
My Commission Expires 1-31-2010

I, Peter J. Molinaro, pursuant to Minnesota Statutes, Section 515 B. 2-101 (c), do hereby certify that all structural components of the structures containing the units and the mechanical systems serving more than one unit, but not the units, are substantially completed.

Dated this 5th day of August, 2008

Peter J. Molinaro
Peter J. Molinaro, Licensed Professional Engineer
Minnesota License No. 12677

STATE OF MINNESOTA
COUNTY OF DAKOTA

The foregoing instrument was acknowledged before me this 5th day of August, 2008, by Peter J. Molinaro, a Licensed Professional Engineer.

Nicholas J. Kolsrud
Notary Public Dakota County, Minnesota
My Commission Expires 1-31-2010

OLMSTED COUNTY SURVEYOR

Pursuant to Minnesota Statutes, Chapter 389.09, Subd. 2, this CIC plat has been reviewed and approved this 14 day of AUGUST, 2008.

By: Paul S. Thoreson
Olmsted County Surveyor

PROPERTY RECORDS AND LICENSING

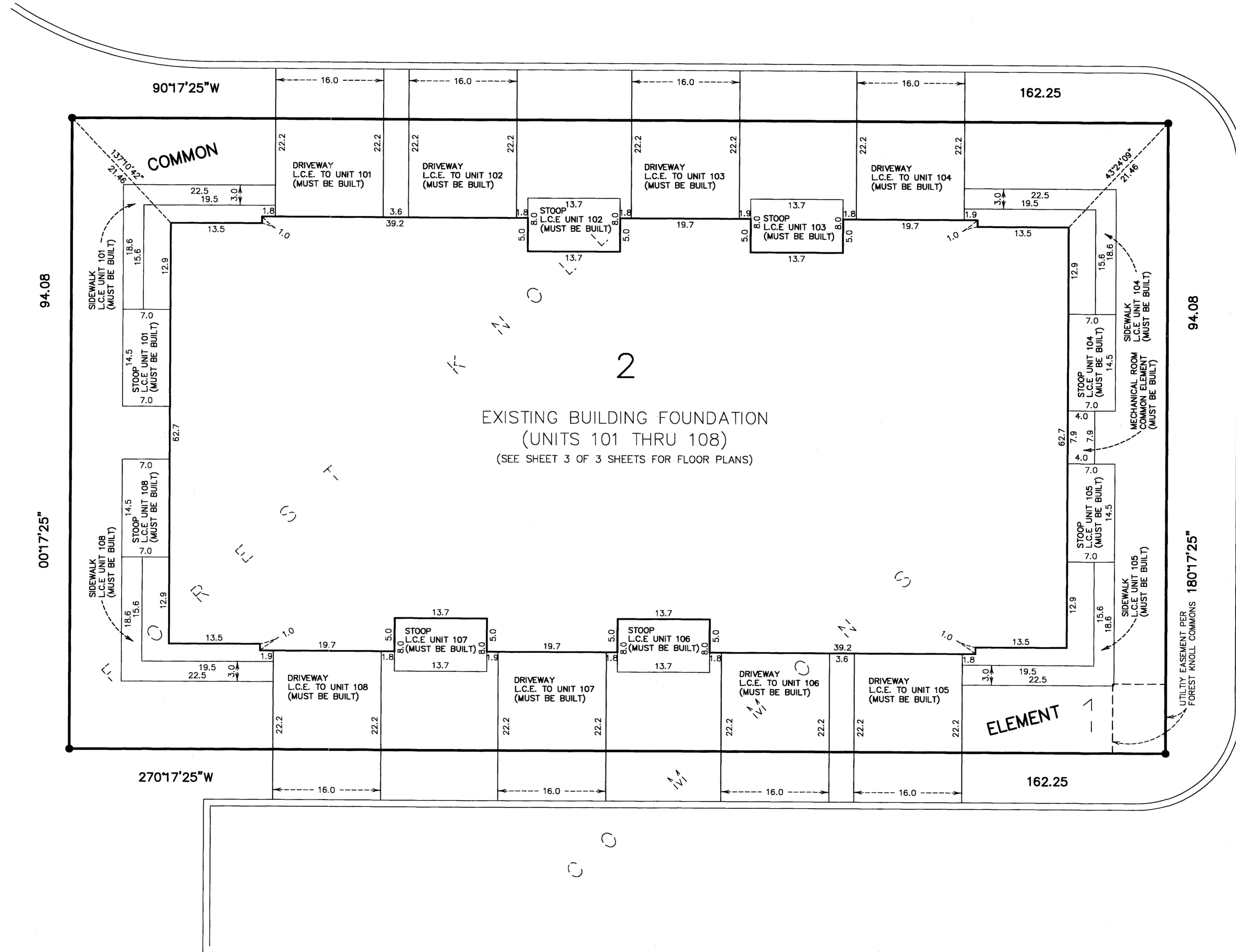
I hereby certify that the current and delinquent taxes on the lands described within are paid and the transfer is entered this 14th day of August, 2008.

Signed by: W. Mark Krupski
Director of Property Records & Licensing

Signed by: Wendy von Wald
Deputy

CIC NUMBER 313

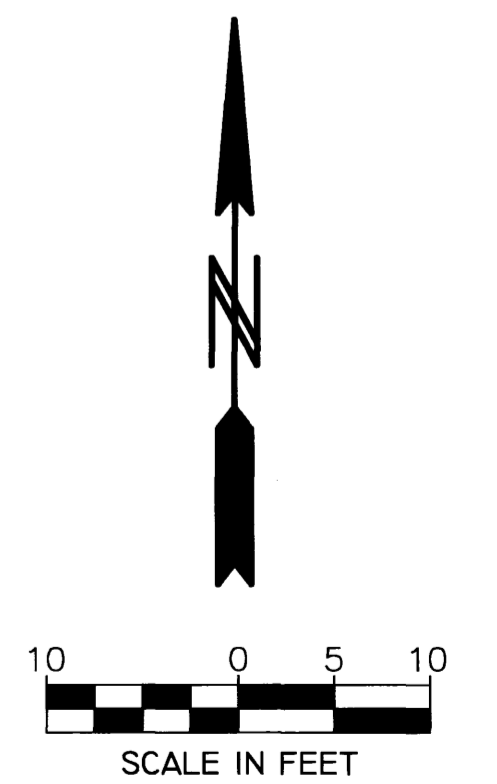
A CONDOMINIUM
FOREST KNOLL
SIXTH SUPPLEMENTAL CIC PLAT



SITE PLAN

BEARINGS ARE BASED ON THE EAST LINE OF LOT 6, BLOCK 2, FOREST KNOLL COMMONS WHICH IS ASSUMED TO HAVE A STATE PLANE GRID BASED AZIMUTH OF 179°45'33\".

● DENOTES FOUND IRON MONUMENT

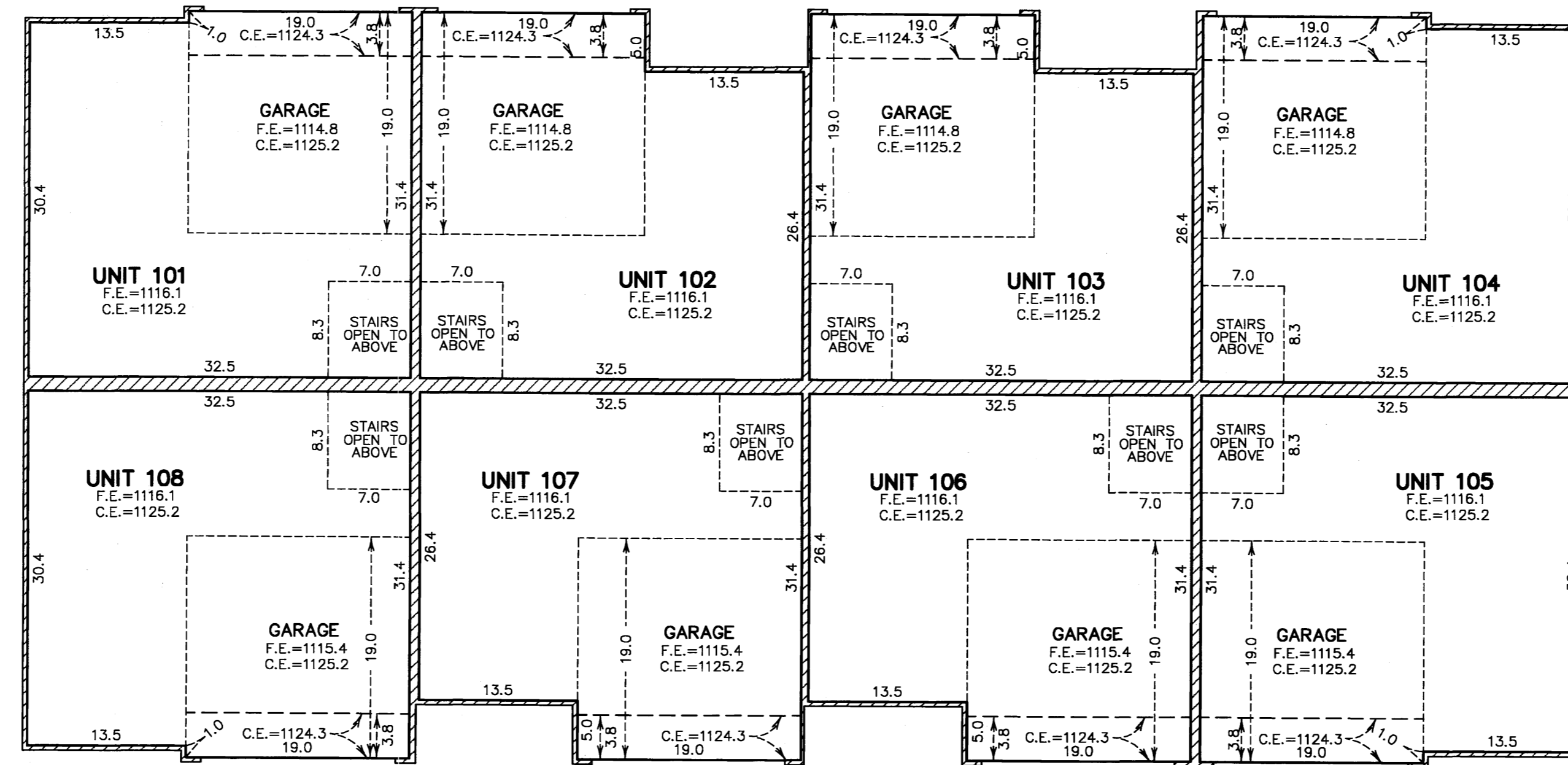


1173B

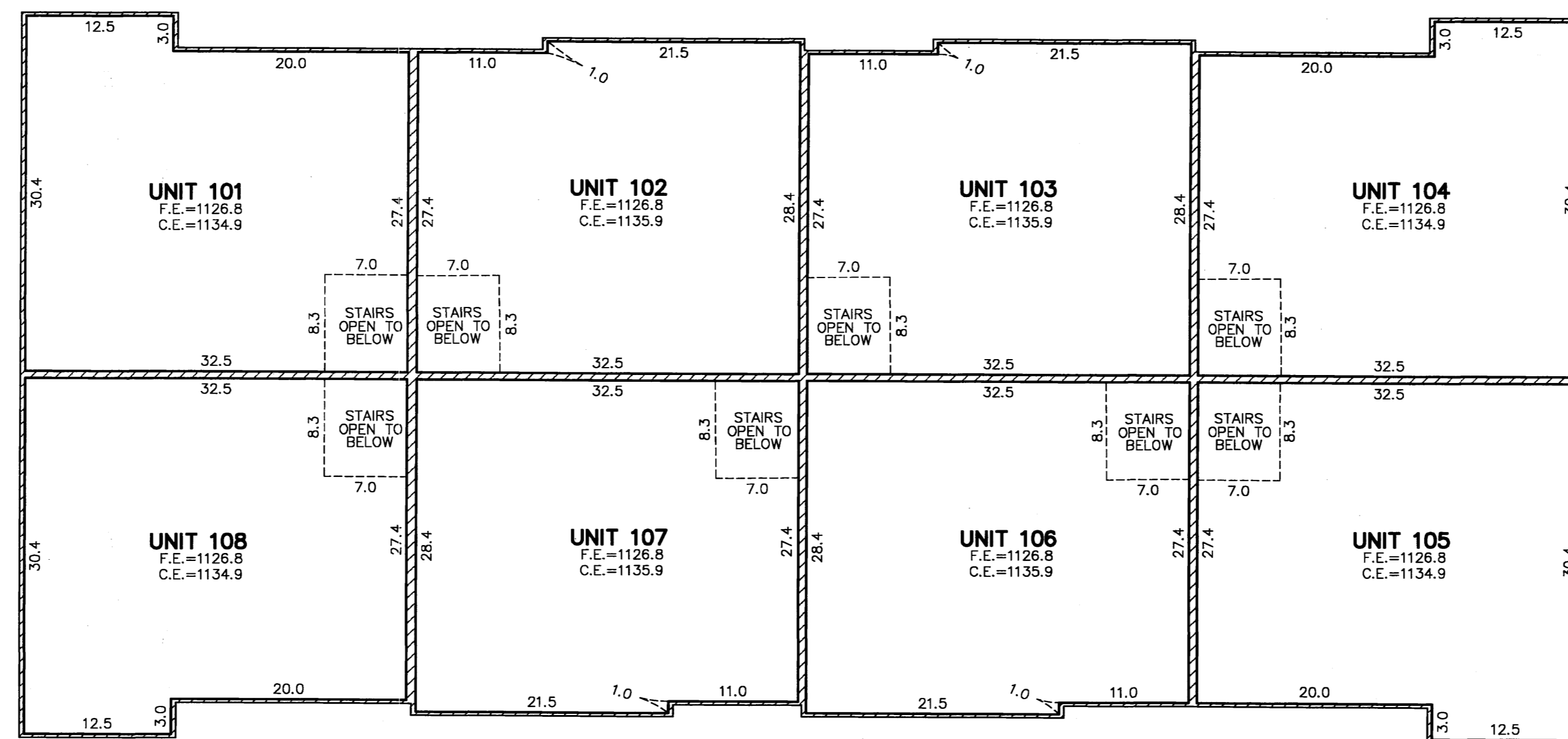
CIC NUMBER 313

A CONDOMINIUM FOREST KNOLL

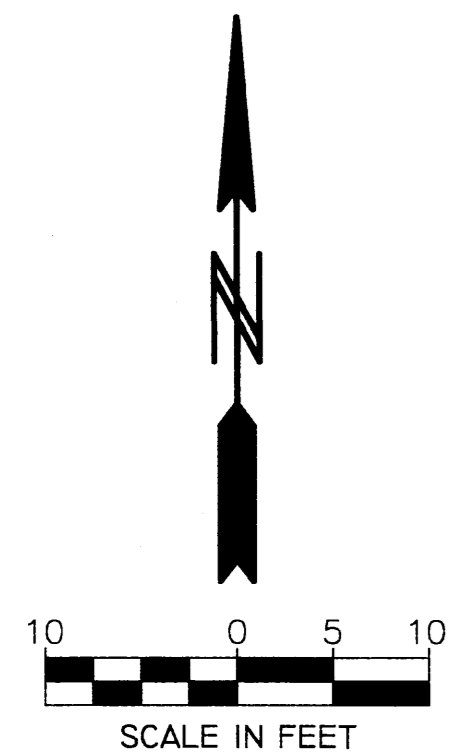
SIXTH SUPPLEMENTAL CIC PLAT



**MAIN LEVEL
(AS-BUILT)**



**UPPER LEVEL
(AS-BUILT)**



C. E. = CEILING ELEVATION
 F.E. = FLOOR ELEVATION
 L.C.E. = LIMITED COMMON ELEMENT
 ELEVATIONS ARE REFERENCED TO A BENCH MARK LISTED ON SHEET 1 OF 3 SHEETS

1173C

PIONEEREngineering
CIVIL ENGINEERS LAND PLANNERS LAND SURVEYORS LANDSCAPE ARCHITECTS