

THE HYLANDS

ROCHESTER, MINNESOTA

NOTE:
 ALL MONUMENTS SHOWN THIS: ○
 ARE 5/8" I.D. CAPPED PIPES SET
 WITH REGISTRATION NO. 11622.
 MONUMENTS SHOWN THIS: ●
 ARE FOUND 5/8" PIPES.
 UNLESS OTHERWISE NOTED.
 BASIS OF BEARING SYSTEM:
 ALL BEARINGS ARE IN RELATIONSHIP
 WITH THE MOST WESTERLY LINE OF
 19 NORWEST WHICH IS ASSUMED
 TO BE S24°30' W.

SCALE: 1 INCH = 100 FEET

Owner's Dedication:

KNOW ALL MEN BY THESE PRESENTS: That Chafoulias Companies, Inc., a Minnesota Corporation, owner and proprietor, and Rochester Savings and Loan Association, mortgagee of the following described property situated in the City of Rochester, State of Minnesota, to wit:

That part of the Northeast Quarter of Section 28, Township 107 North, Range 14 West, in the City of Rochester, Olmsted County, Minnesota, described as follows: Beginning at the northeast corner of said Northeast Quarter of Section 28, thence southerly along the east line of said Northeast Quarter (for purposes of this description said east line is assumed South 0 degree 00 minute 00 second East) a distance of 911.70 feet; thence West, at right angles to said section line, along the south line of Northridge First Subdivision, a distance of 507.5 feet to the southwest corner of Lot 7, Block 4 of Northridge First Subdivision; thence south parallel with said section line, a distance of 700 feet; thence West at right angles, a distance of 235 feet; thence southwesterly at a deflection angle of 65 degrees 30 minutes 00 seconds which is a bearing of South 24 degrees 30 minutes 00 seconds West, a distance of 96.94 feet to the true point of beginning of the parcel to be herein described; thence continuing on the above described line (said line being also the westerly line of "19 Norwest" according to the recorded plat thereof) South 24 degrees 30 minutes 00 seconds West, 691.29 feet (previously described 690.00 feet) to a point on the northeasterly right of way line of County State Aid Highway 4; thence northwesterly 240.87 feet along said right of way line and along a curve concave to the northeast, central angle 13 degrees 04 minutes 19 seconds, radius 1055.77 feet, and the chord of said curve bears North 44 degrees 42 minutes 06 seconds West, 240.35 feet; thence along said right of way line, South 51 degrees 50 minutes 03 seconds West, 3.00 feet; thence along said right of way line North 38 degrees 09 minutes 57 seconds West, 1098.72 feet to the most southerly corner of Valley High Village; thence North 51 degrees 49 minutes 10 seconds East along the southerly line of said subdivision, 384.07 feet; thence North 51 degrees 46 minutes 14 seconds East along the southerly line of said subdivision, 41.72 feet; thence South 90 degrees 00 minutes East, 299.72 feet; thence South 00 degrees 00 minutes East, 431.63 feet; thence South 63 degrees 11 minutes East, 232.60 feet; thence South 66 degrees 09 minutes East, 322.61 feet to the point of beginning.

Containing 14.68 acres.

Have caused the same to be surveyed and platted as THE HYLANDS and do hereby donate and dedicate to the public, for the public use forever the Court and walkway and grant the easements as shown on this plat. In witness whereof said Chafoulias Companies, Inc., has caused these presents to be signed by its proper officer this 16th day of August, 1979. In witness whereof said Rochester Savings and Loan Association has caused these presents to be signed by its proper officers this 16th day of August, 1979.

Chafoulias Companies, Inc.
 Gus A. Chafoulias, President

Rochester Savings and Loan Association

Walter A. King
 Its President
Harbert A. Carlisle
 Its Secretary

State of Minnesota
County of Olmsted

The foregoing instrument was acknowledged before me this 16th day of August, 1979, by Gus A. Chafoulias, President, Officer of Chafoulias Companies, Inc. on behalf of the corporation.

Howard E. Hunt
 Notary Public, Olmsted County, Minnesota
 My commission expires Dec. 7, 1985

State of Minnesota
County of Olmsted

The foregoing instrument was acknowledged before me this 16th day of August, 1979, by *Walter A. King* and *Harbert A. Carlisle*, its President and Secretary, officers of Rochester Savings and Loan Association on behalf of the corporation.

Marian A. King
 Notary Public, Olmsted County, Minnesota
 My commission expires _____

MARIAN A. KING
 NOTARY PUBLIC - MINNESOTA
 OLMDSTED COUNTY
 MY COMMISSION EXPIRES MAR. 31, 1986

PREPARED BY:
 MCGHEE & BETTS, INC.
 CONSULTING ENGINEERS
 ROCHESTER, MINNESOTA

OFFICIAL PLAT

I hereby certify that I have surveyed and platted the property described on this plat as THE HYLANDS; that this is a correct representation of the survey; that all distances are correctly shown on the plat; that all monuments have been correctly placed in the ground as shown; that the outside boundary lines are correctly designated on the plat; and that there are no wet lands or public highways to be designated on said plat other than as shown thereon.

James E. Swanson
 James E. Swanson, R.L.S.
 Minnesota Registration No. 11622

State of Minnesota
County of Olmsted

The surveyor's certificate was subscribed and sworn to before me, a Notary Public, this 16th day of August, 1979.

Howard E. Hunt
 Notary Public, Olmsted County, Minnesota

HOWARD E. HUNT
 NOTARY PUBLIC - MINNESOTA
 OLMDSTED COUNTY
 My commission expires Dec. 7, 1985

My commission expires _____

No delinquent taxes due and transfer entered this 24th day of August, 1979.

Counted & Examined by
Marian Nelson, Deputy
 County Auditor, 417768

Filed for record this 24th day of August, 1979, at 4:12 o'clock p.m. in book _____ of plats, on page _____ as instrument number _____

LOIS FINSTUEN
 County Recorder, Olmsted County, Minnesota
Carole M. Baker
 Deputy

County Surveyor

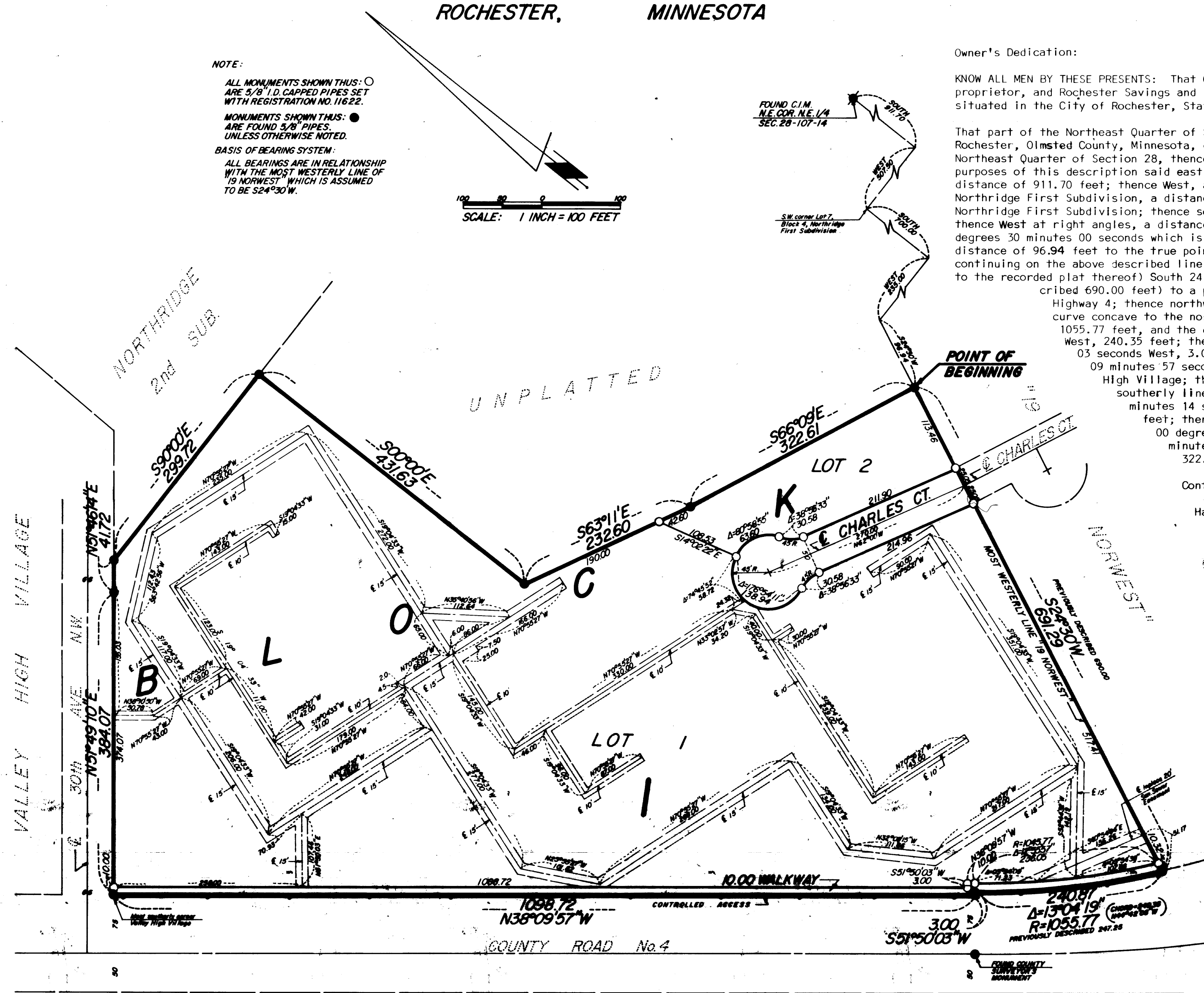
I certify that this plat has been checked mathematically and that the plat conforms to the applicable platting laws, this 16th day of August, 1979 A.D.

Roger W. Brand
 Olmsted County Surveyor

State of Minnesota
County of Olmsted
City of Rochester

I, Carole A. Grimm, City Clerk in and for the City of Rochester, do hereby certify that on the 20th day of August, 1979 A.D., the accompanying plat was duly approved by the Common Council of the City of Rochester. In testimony thereof I have hereunto signed my name and affixed the seal of said City of Rochester this 20th day of August, 1979 A.D.

Carole A. Grimm
 City Clerk, City of Rochester



NOTE:
 ALL 15' UTILITY EASEMENTS ARE
 7.5' ON EACH SIDE OF CENTERLINE.
 ALL 10' UTILITY EASEMENTS ARE
 5.0' ON EACH SIDE OF CENTERLINE.
 UNLESS OTHERWISE NOTED.

Utility Easement Defined:

An unobstructed easement for the construction and maintenance of all necessary overhead, underground, or surface public utilities including rights to conduct drainage and trimming on said easements.

Controlled Access Defined:

Ingress or egress to, from, or across the abutting roadway is restricted by the road authority pursuant to Minnesota State Statute 160.08.