

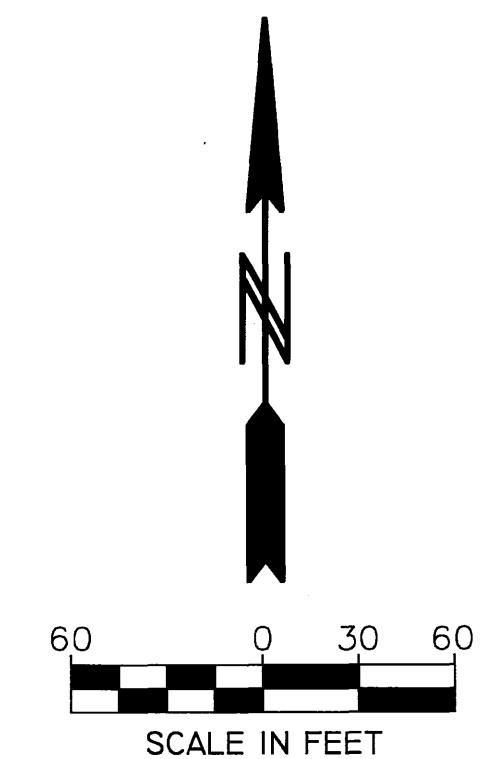
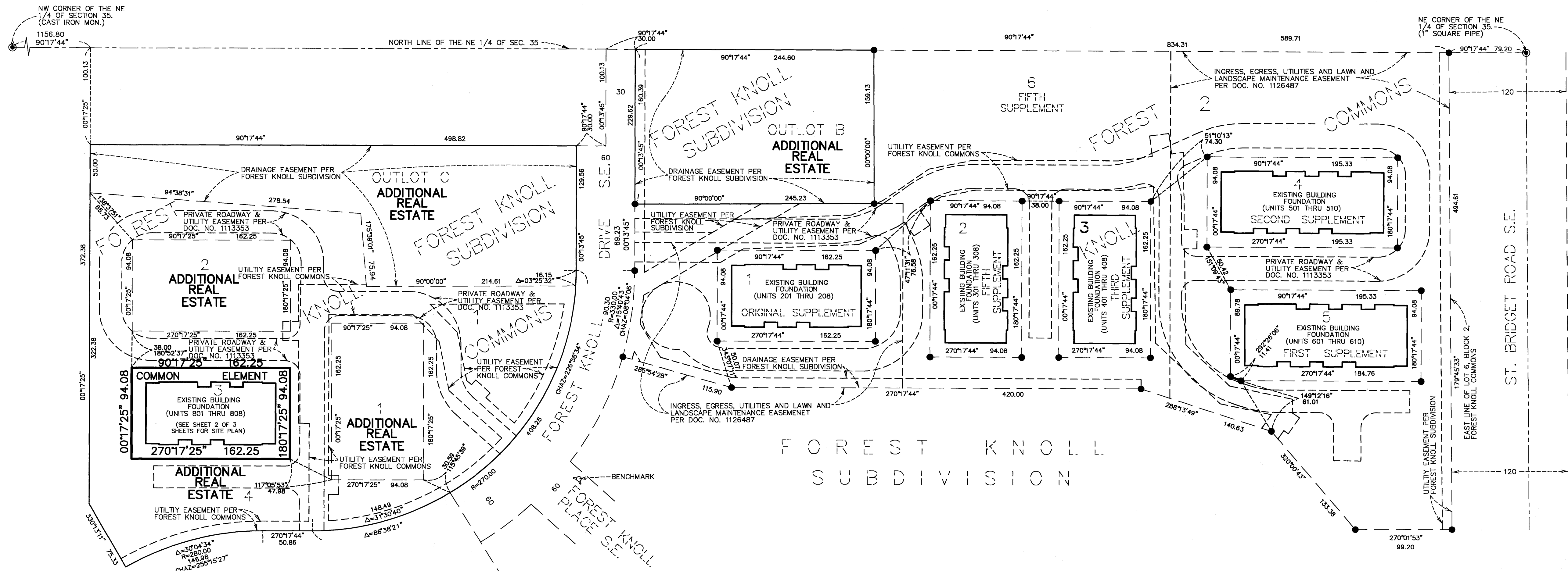
CIC NUMBER 313

A CONDOMINIUM FOREST KNOLL FIFTH SUPPLEMENTAL CIC PLAT

This FIFTH SUPPLEMENTAL CIC Plat is part of the Fifth Supplemental Declaration recorded as Document No. A-1157523 on this 25th of January, 2008.

W. Mark Krupski
Director of Property Records and Licensing

Wendy von Wald
Deputy

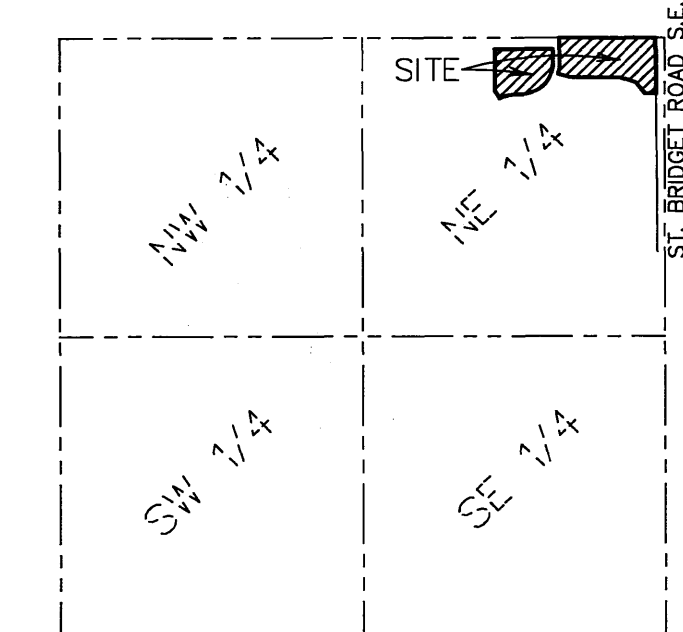


BEARINGS ARE BASED ON THE EAST LINE OF LOT 6, BLOCK 2, FOREST KNOLL COMMONS WHICH IS ASSUMED TO HAVE A STATE PLANE GRID BASED AZIMUTH OF 179°45'33".

● DENOTES FOUND IRON MONUMENT

BENCH MARK: T.N.H. EAST QUADRANT OF FOREST KNOLL DRIVE S.E. AND FOREST KNOLL PLACE S.E. 20 FEET SOUTHEASTERLY OF THE SOUTHWEST CORNER OF LOT 2, BLOCK 1, FOREST KNOLL SUBDIVISION ELEV.=1119.00 FEET (N.G.V.D. 1929).

ALL DRAINAGE AND UTILITY EASEMENTS ARE DEDICATED ON THE PLATS OF FOREST KNOLL SUBDIVISION AND FOREST KNOLL COMMONS.



SECTION 35, TWP. 106, RGE. 14
LOCATION MAP
NO SCALE

I, John C. Larson, do hereby certify that the work was undertaken by or reviewed and approved by me for this FIFTH SUPPLEMENTAL CIC Plat of CIC NUMBER 313, A CONDOMINIUM, FOREST KNOLL, located upon

Lot 3, Block 1, FOREST KNOLL COMMONS, according to the recorded plat thereof, Olmsted County, Minnesota and the additional real estate described as follows:

Lots 1, 2 and 4, Block 1, said FOREST KNOLL COMMONS.

Together with:

Outlots B and C, FOREST KNOLL SUBDIVISION, according to the recorded plat thereof, Olmsted County, Minnesota.

fully and accurately depicts all information required by Minnesota Statutes, Section 515 B. 2-110, as amended.

Dated this 16 day of January, 2008.

John C. Larson
John C. Larson, Professional Land Surveyor
Minnesota Registration No. 19828

STATE OF MINNESOTA
COUNTY OF Dakota

The foregoing instrument was acknowledged before me this 16 day of January, 2008, by John C. Larson, Registered Professional Land Surveyor.

NICHOLAS J. KOLSRUD
NOTARY PUBLIC
MY COMM. EXP. 01/31/2010

I, Peter J. Molinaro, pursuant to Minnesota Statutes, Section 515 B. 2-101 (c), do hereby certify that all structural components of the structures containing the units and the mechanical systems serving more than one unit, but not the units, are substantially completed.

Dated this 16 day of January, 2008.

Peter J. Molinaro
Peter J. Molinaro, Licensed Professional Engineer
Minnesota License No. 12677

STATE OF MINNESOTA
COUNTY OF Dakota

The foregoing instrument was acknowledged before me this 16 day of January, 2008, by Peter J. Molinaro, a Licensed Professional Engineer.

NICHOLAS J. KOLSRUD
NOTARY PUBLIC
MY COMM. EXP. 01/31/2010

Stephen J. Kolund
Notary Public Dakota County, Minnesota
My Commission Expires 1-31-2010

OLMSTED COUNTY SURVEYOR
Pursuant to Minnesota Statutes, Chapter 389.09, Subd. 2, this CIC plat has been reviewed and approved this 25 day of JANUARY, 2008.

By: Paul J. Johnson
Olmsted County Surveyor

PROPERTY RECORDS AND LICENSING
I hereby certify that the current and delinquent taxes on the lands described within are paid and the transfer is entered this 25th day of January, 2008.

Signed by: W. Mark Krupski
Director of Property Records & Licensing

Signed by: Wendy von Wald
Deputy

1161A

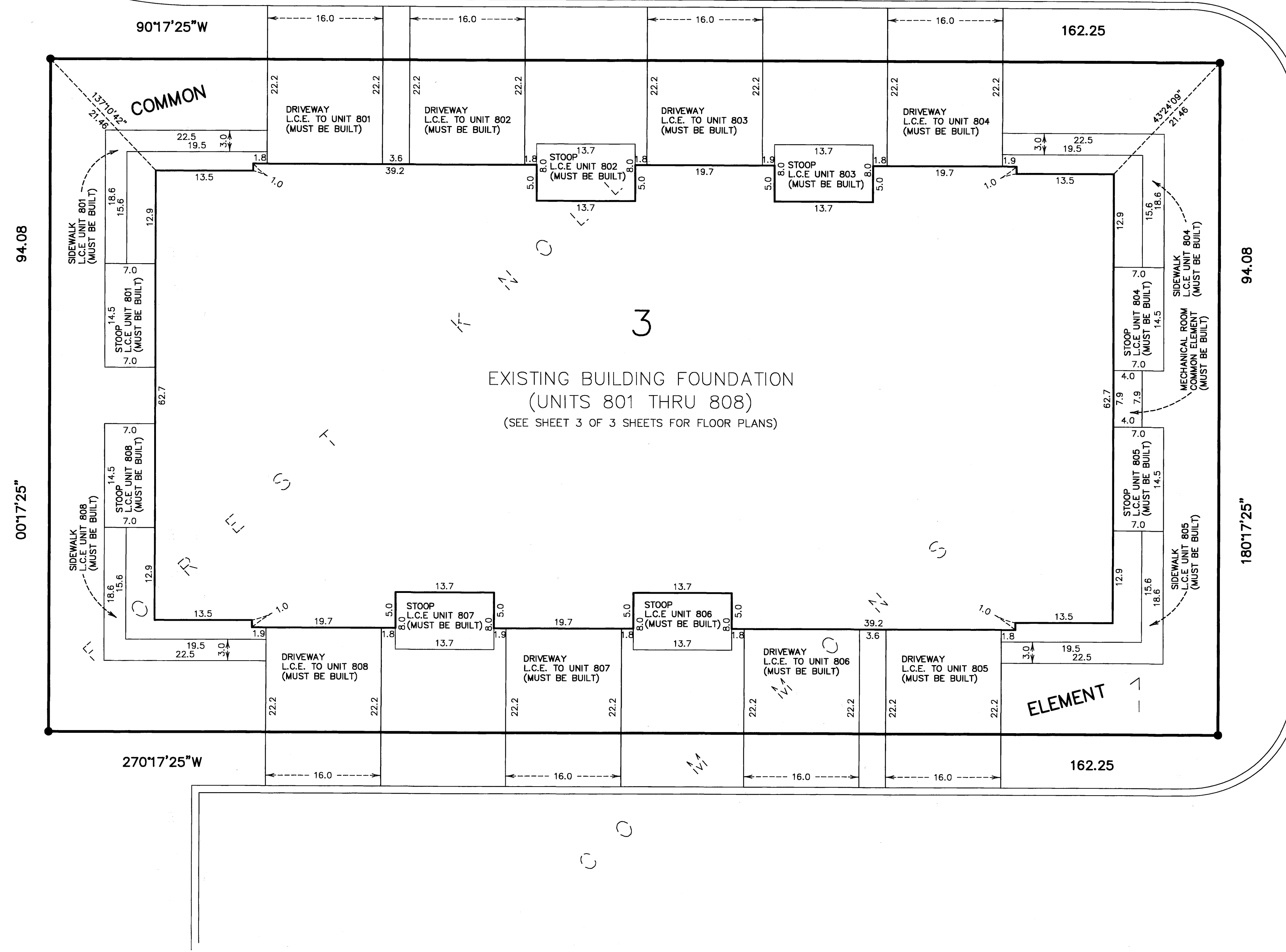
PIONEEREngineering
CIVIL ENGINEERS LAND PLANNERS LAND SURVEYORS LANDSCAPE ARCHITECTS

Mendota Heights Office 2422 Enterprise Drive Mendota Heights, MN 55120 (651) 681 1914 Fax: 681 9488

Coon Rapids Office 201 85th Avenue N.W. Coon Rapids, MN 55433 (763) 783 1880 Fax: 783 1883

CIC NUMBER 313

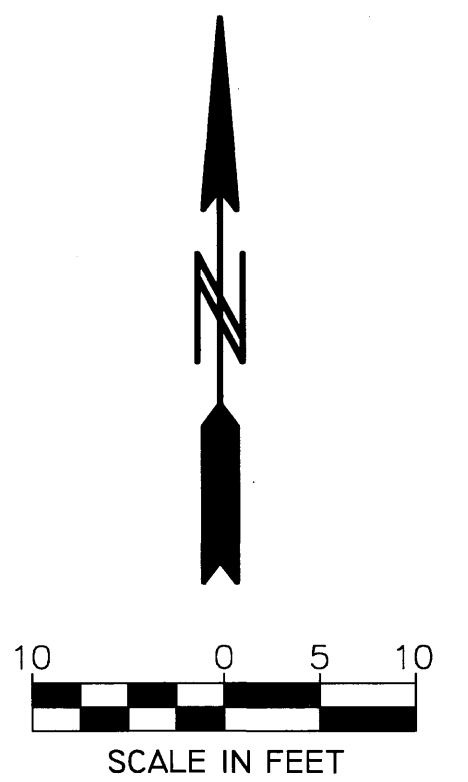
A CONDOMINIUM
FOREST KNOLL
FIFTH SUPPLEMENTAL CIC PLAT



SITE PLAN

BEARINGS ARE BASED ON THE EAST LINE OF LOT 6, BLOCK 2, FOREST KNOLL COMMONS WHICH IS ASSUMED TO HAVE A STATE PLANE GRID BASED AZIMUTH OF 179°45'33".

● DENOTES FOUND IRON MONUMENT



1161B

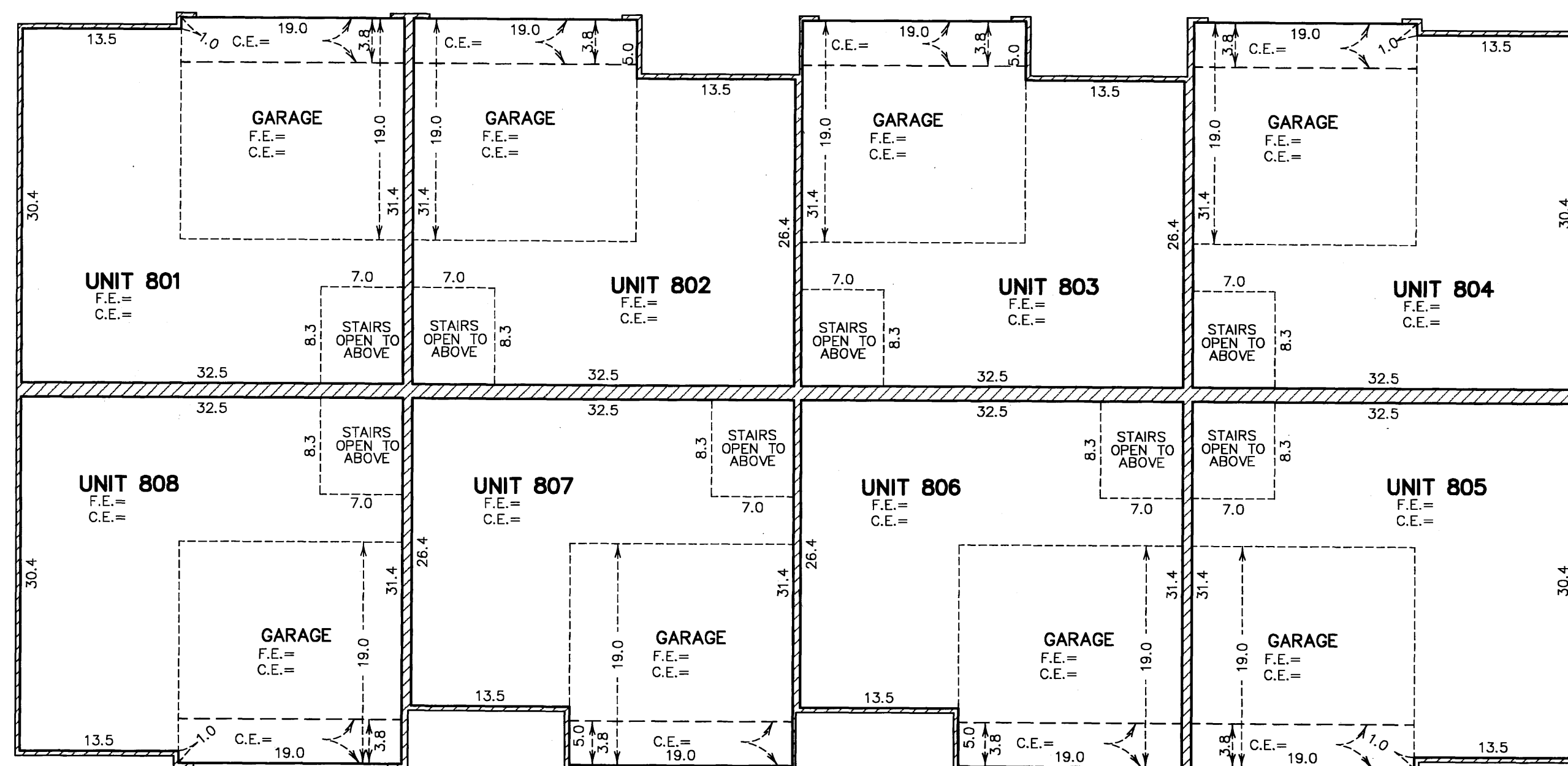
PIONEERengineering
CIVIL ENGINEERS LAND PLANNERS LAND SURVEYORS LANDSCAPE ARCHITECTS

Mendota Heights Office
 2422 Enterprise Drive
 Mendota Heights, MN 55120
 (651) 681 1914 Fax: 681 9488

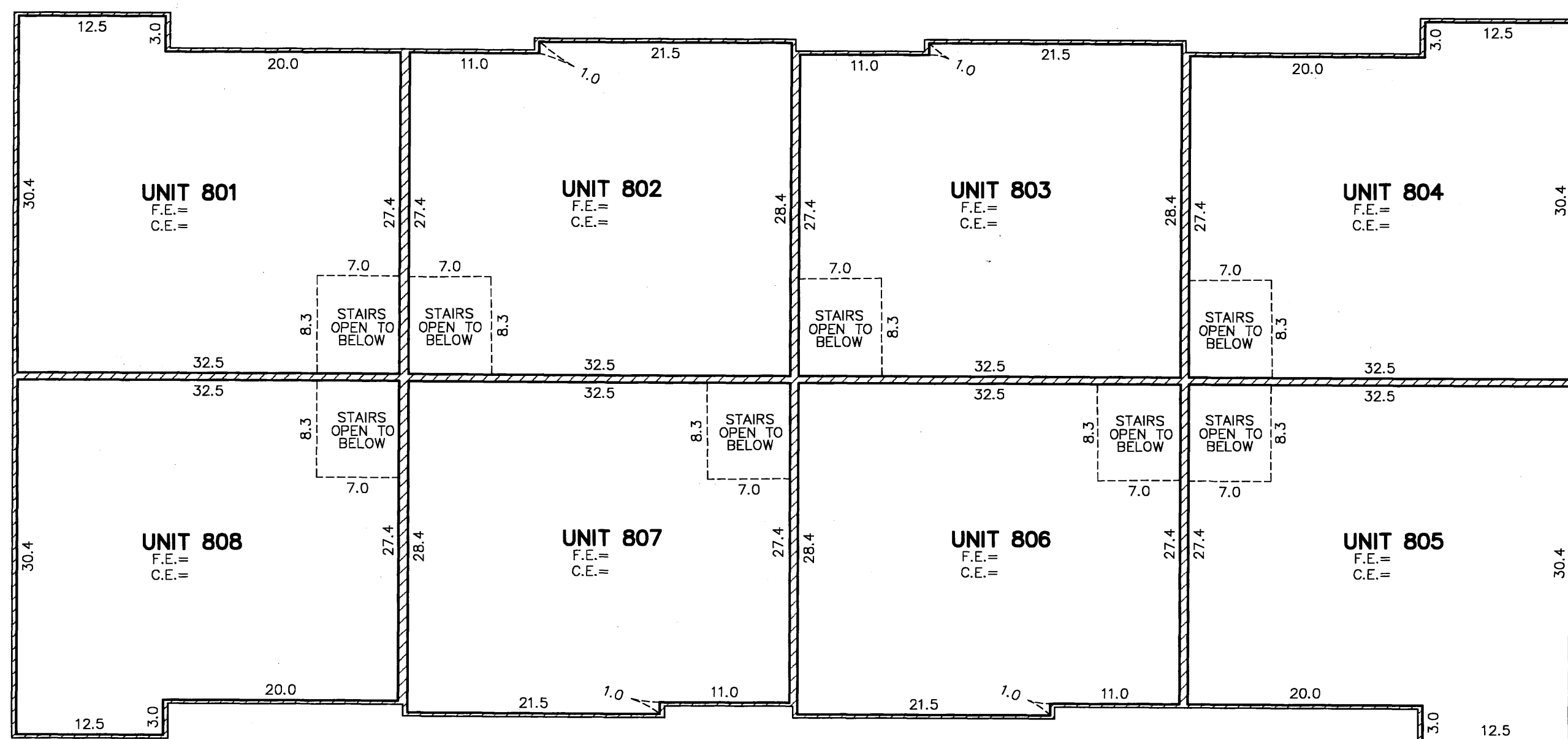
Coon Rapids Office
 201 85th Avenue N.W.
 Coon Rapids, MN 55433
 (763) 783 1880 Fax: 783 1883

CIC NUMBER 313

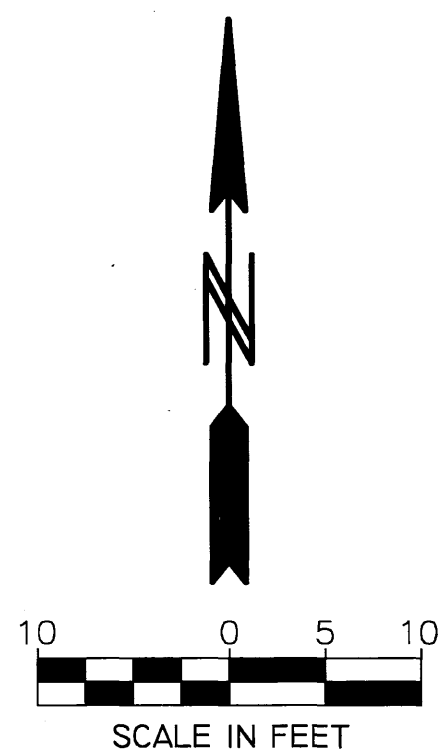
A CONDOMINIUM
FOREST KNOLL
FIFTH SUPPLEMENTAL CIC PLAT



MAIN LEVEL
(AS-BUILT)



UPPER LEVEL
(AS-BUILT)



C. E. = CEILING ELEVATION
 F.E. = FLOOR ELEVATION
 L.C.E. = LIMITED COMMON ELEMENT
 ELEVATIONS ARE REFERENCED TO A BENCH MARK LISTED ON SHEET 1 OF 3 SHEETS

PIONEER Engineering
CIVIL ENGINEERS LAND PLANNERS LAND SURVEYORS LANDSCAPE ARCHITECTS
 Mendota Heights Office: 2422 Enterprise Drive, Mendota Heights, MN 55120, (651) 681 1914 Fax: 681 9488
 Coon Rapids Office: 201 85th Avenue N.W., Coon Rapids, MN 55433, (763) 783 1880 Fax: 783 1883

1161C