

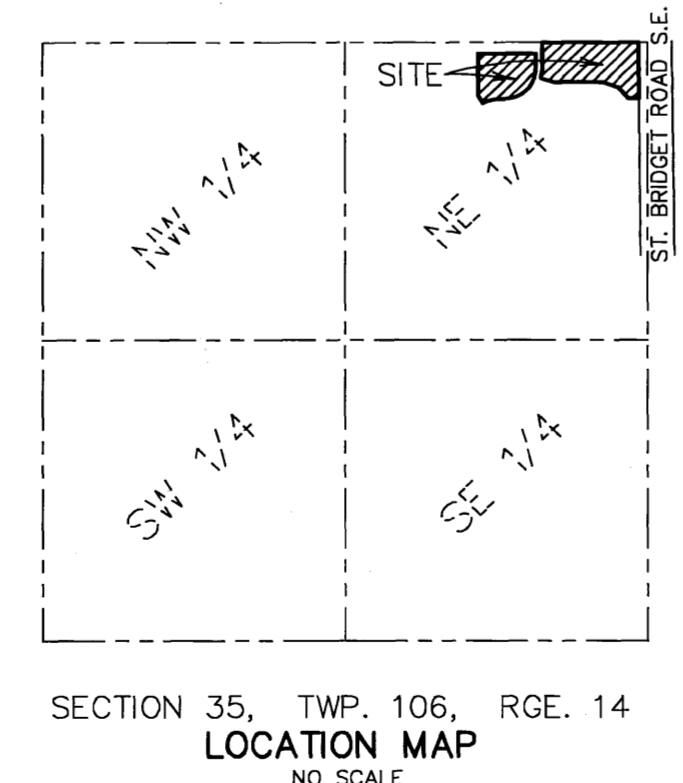
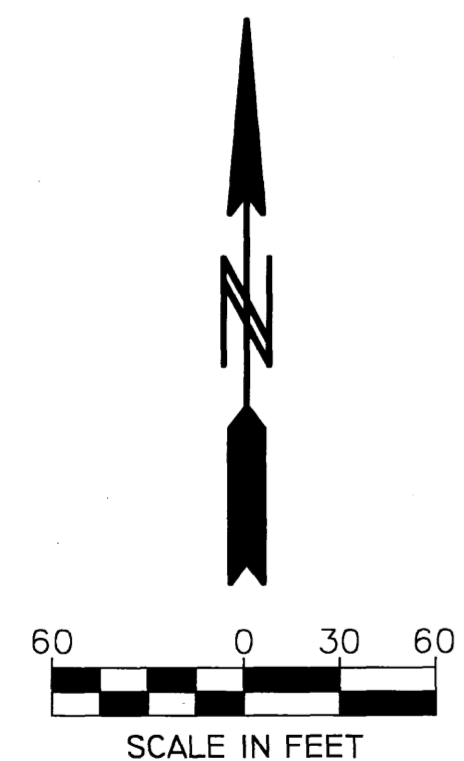
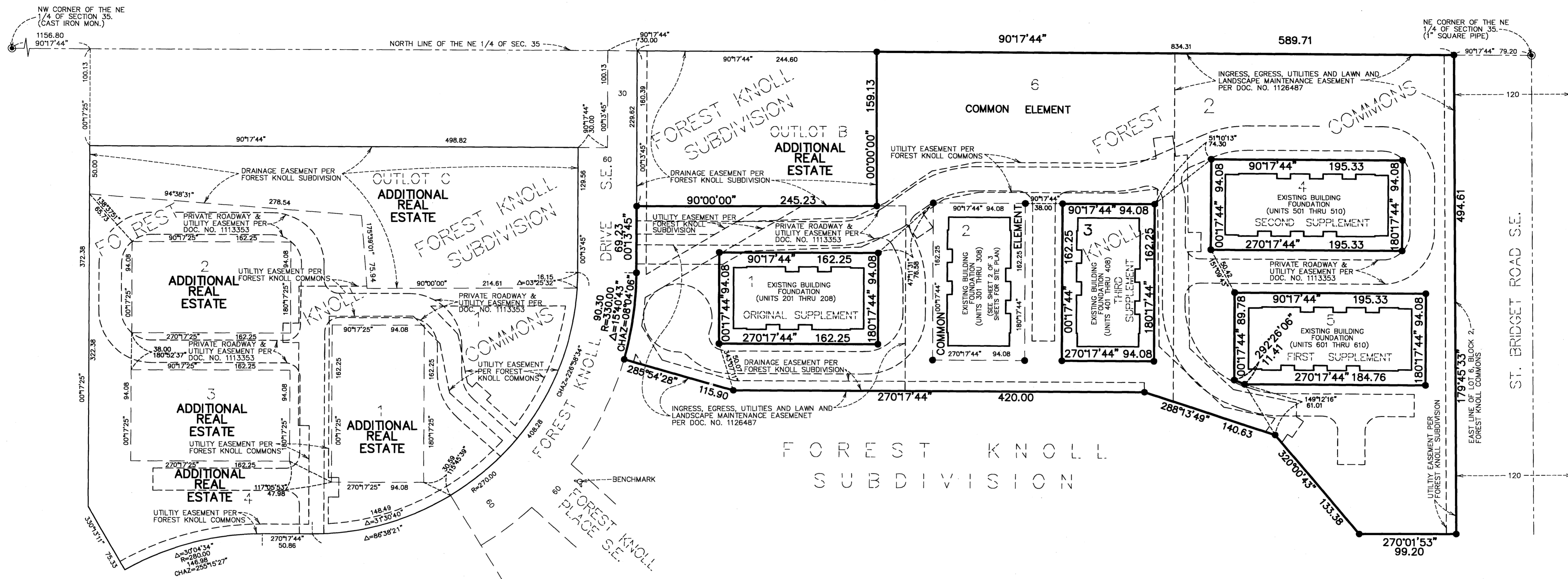
CIC NUMBER 313

A CONDOMINIUM FOREST KNOLL FOURTH SUPPLEMENTAL CIC PLAT

This FOURTH SUPPLEMENTAL CIC Plat is part of the Fourth Supplemental Declaration recorded as Document No. A-1154059 on this 7th of December, 2007.

W. Mark Krupski
Director of Property Records and Licensing

Wendy von Wald
Deputy



BEARINGS ARE BASED ON THE EAST LINE OF LOT 6, BLOCK 2, FOREST KNOLL COMMONS WHICH IS ASSUMED TO HAVE A STATE PLANE GRID BASED AZIMUTH OF 179°45'33".

● DENOTES FOUND IRON MONUMENT

BENCH MARK: T.N.H. EAST QUADRANT OF FOREST KNOLL DRIVE S.E. AND FOREST KNOLL PLACE S.E., 20 FEET SOUTHEASTERLY OF THE SOUTHWEST CORNER OF LOT 2, BLOCK 1, FOREST KNOLL SUBDIVISION ELEV.=1119.00 FEET (N.G.V.D. 1929).

ALL DRAINAGE AND UTILITY EASEMENTS ARE DEDICATED ON THE PLATS OF FOREST KNOLL SUBDIVISION AND FOREST KNOLL COMMONS.

I, John C. Larson, do hereby certify that the work was undertaken by or reviewed and approved by me for this FOURTH SUPPLEMENTAL CIC Plat of CIC NUMBER 313, A CONDOMINIUM, FOREST KNOLL, located upon

Lots 2 and 6, Block 2, FOREST KNOLL COMMONS, according to the recorded plat thereof, Olmsted County, Minnesota and the additional real estate described as follows:

Lots 1, 2, 3, and 4, Block 1, said FOREST KNOLL COMMONS.

Together with:

Outlots B and C, FOREST KNOLL SUBDIVISION, according to the recorded plat thereof, Olmsted County, Minnesota.

fully and accurately depicts all information required by Minnesota Statutes, Section 515 B. 2-110, as amended.

Dated this 27 day of November, 2007.

John C. Larson
John C. Larson, Professional Land Surveyor
Minnesota Registration No. 19828

STATE OF MINNESOTA
COUNTY OF Dakota

The foregoing instrument was acknowledged before me this 27 day of November, 2007, by John C. Larson, Registered Professional Land Surveyor.

Nicholas J. Kolsrud
Notary Public, Dakota County, Minnesota
My Commission Expires 1-31-2010

I, Peter J. Molinaro, pursuant to Minnesota Statutes, Section 515 B. 2-101 (c), do hereby certify that all structural components of the structures containing the units and the mechanical systems serving more than one unit, but not the units, are substantially completed.

Dated this 27 day of November, 2007.

Peter J. Molinaro
Peter J. Molinaro, Licensed Professional Engineer
Minnesota License No. 12677

STATE OF MINNESOTA
COUNTY OF Dakota

The foregoing instrument was acknowledged before me this 27 day of November, 2007, by Peter J. Molinaro, a Licensed Professional Engineer.

Nicholas J. Kolsrud
Notary Public, Dakota County, Minnesota
My Commission Expires 1-31-2010

John S. Peterson
John S. Peterson, Notary Public
Minnesota Registration No. 19828

OLMSTED COUNTY SURVEYOR

Pursuant to Minnesota Statutes, Chapter 389.09, Subd. 2, this CIC plat has been reviewed and approved this 4 day of DECEMBER, 2007.

By: John S. Peterson
Olmsted County Surveyor

PROPERTY RECORDS AND LICENSING

I hereby certify that the current and delinquent taxes on the lands described within are paid and the transfer is entered this 7th day of December, 2007.

Signed by: W. Mark Krupski
Director of Property Records & Licensing

Signed by: Wendy von Wald
Deputy

1153A

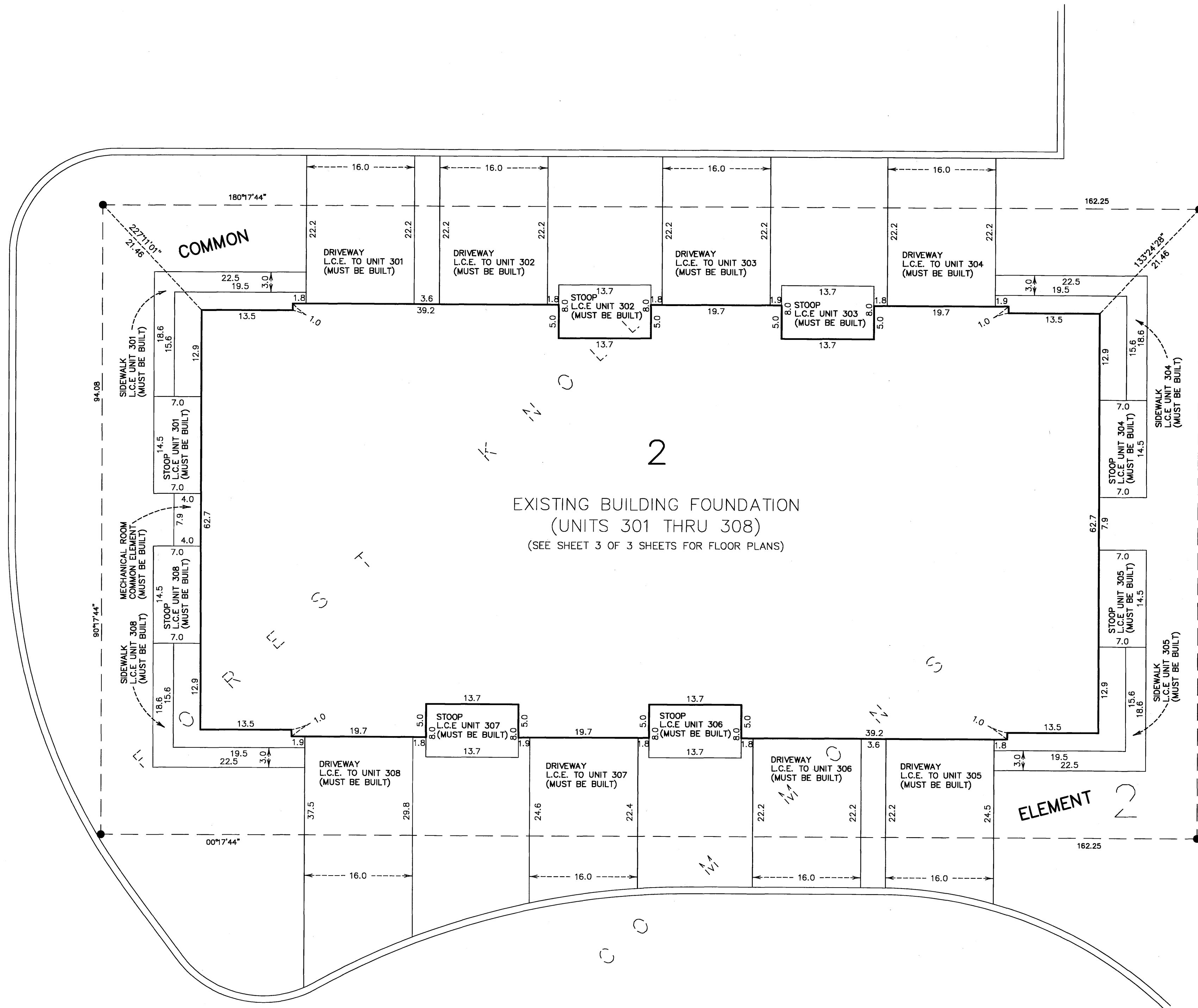
PIONEERengineering
CIVIL ENGINEERS LAND PLANNERS LAND SURVEYORS LANDSCAPE ARCHITECTS

Mendota Heights Office: 2422 Enterprise Drive, Mendota Heights, MN 55120, (651) 681 1914 Fax: 681 9488

Coon Rapids Office: 201 85th Avenue N.W., Coon Rapids, MN 55433, (763) 783 1880 Fax: 783 1883

CIC NUMBER 313

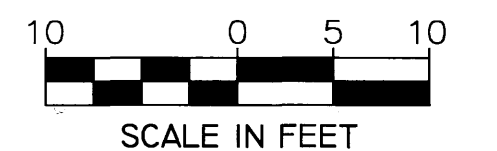
A CONDOMINIUM
FOREST KNOLL
FOURTH SUPPLEMENTAL CIC PLAT



SITE PLAN

BEARINGS ARE BASED ON THE EAST LINE OF LOT 6, BLOCK 2, FOREST KNOLL COMMONS WHICH IS ASSUMED TO HAVE A STATE PLANE GRID BASED AZIMUTH OF 179°45'33".

● DENOTES FOUND IRON MONUMENT



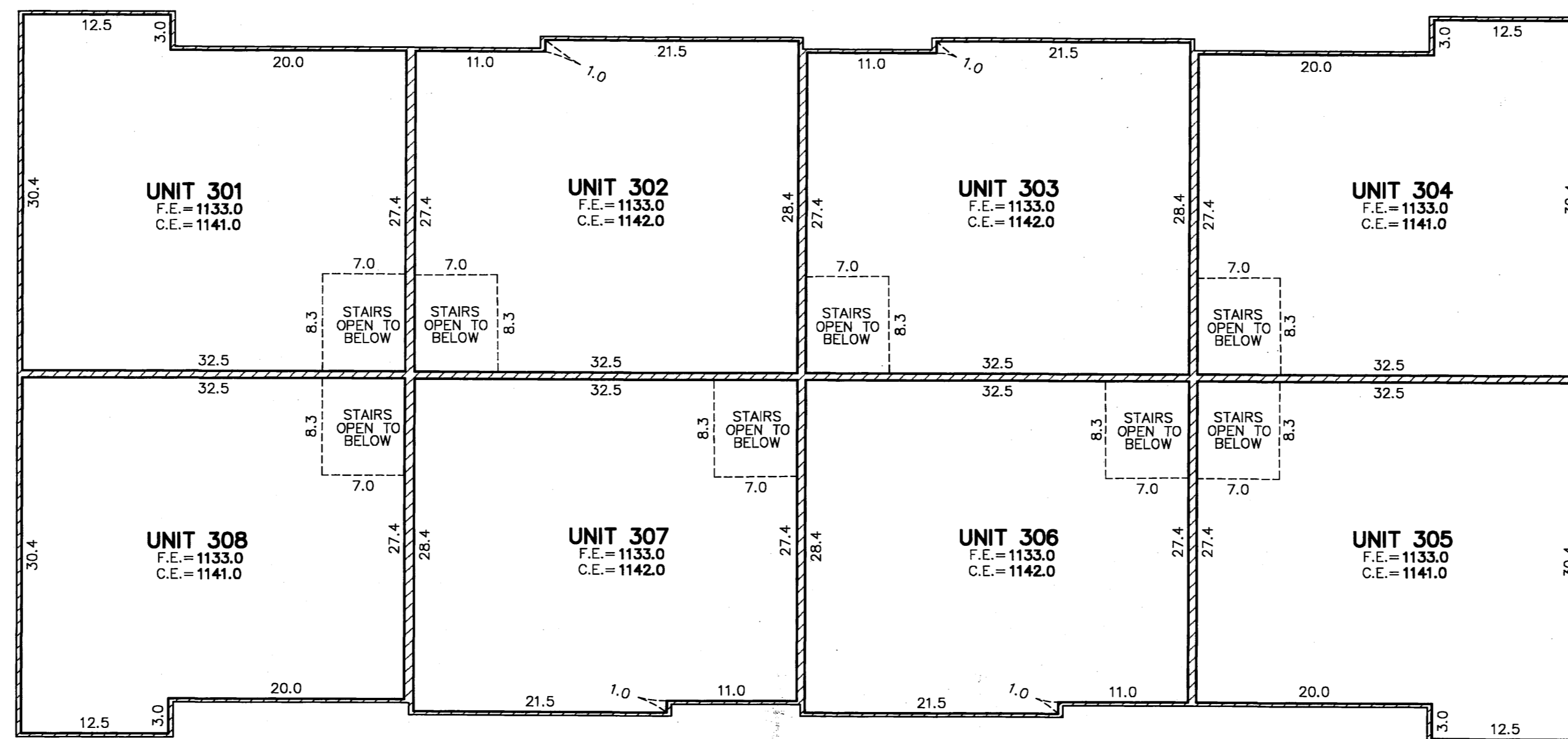
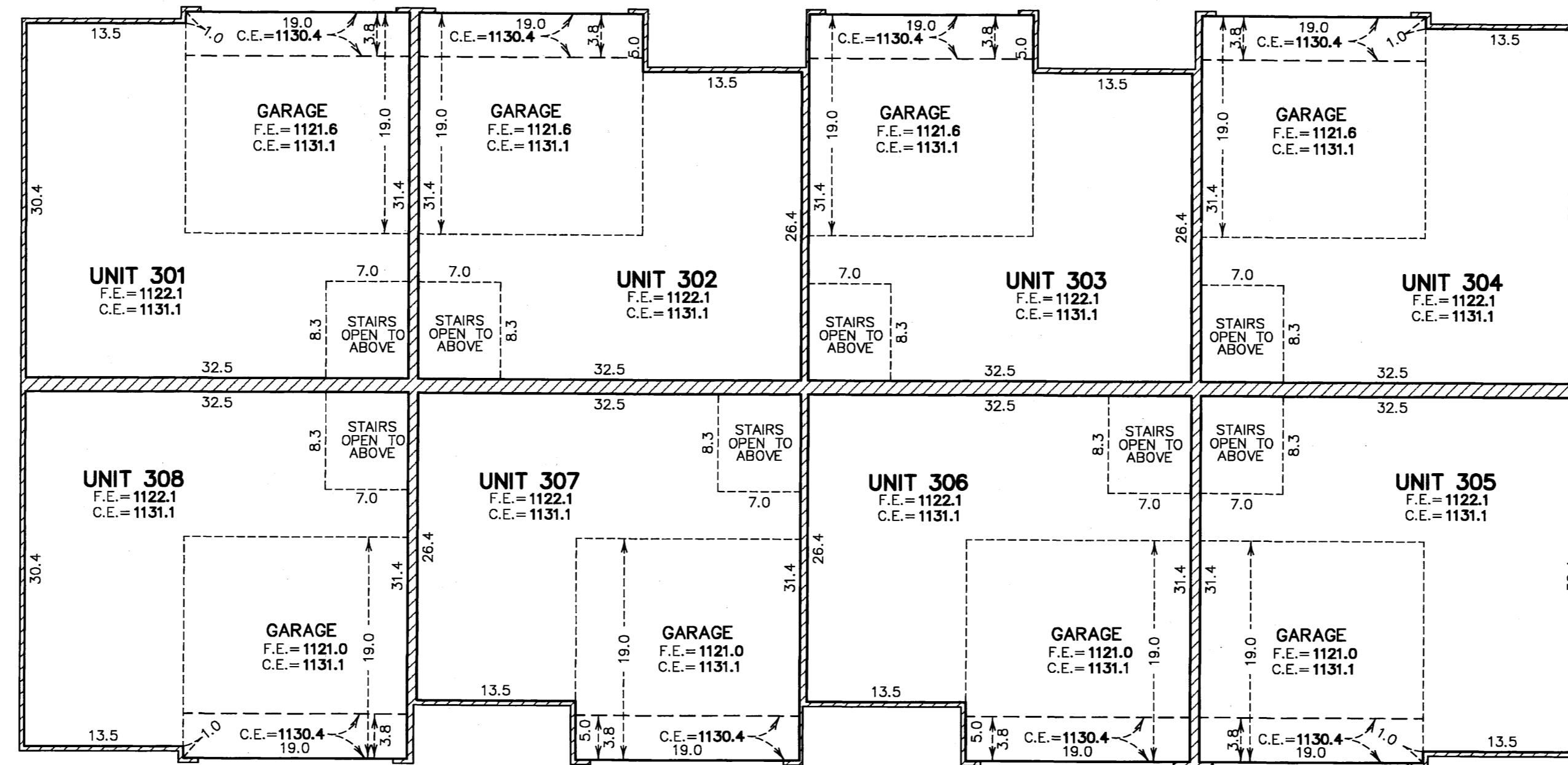
PIONEERengineering
CIVIL ENGINEERS LAND PLANNERS LAND SURVEYORS LANDSCAPE ARCHITECTS

Mendota Heights Office Coon Rapids Office
 2422 Enterprise Drive 201 85th Avenue N.W.
 Mendota Heights, MN 55120 Coon Rapids, MN 55433
 (651) 681 1914 Fax: 681 9488 (763) 783 1880 Fax: 783 1883

1153B

CIC NUMBER 313

A CONDOMINIUM
FOREST KNOLL
FOURTH SUPPLEMENTAL CIC PLAT



C. E. = CEILING ELEVATION
 F.E. = FLOOR ELEVATION
 L.C.E. = LIMITED COMMON ELEMENT
 ELEVATIONS ARE REFERENCED TO A BENCH MARK LISTED ON SHEET 1 OF 3 SHEETS

11530

PIONEER Engineering
CIVIL ENGINEERS LAND PLANNERS LAND SURVEYORS LANDSCAPE ARCHITECTS
 Mendota Heights Office 2422 Enterprise Drive Mendota Heights, MN 55120 (651) 681 1914 Fax: 681 9488
 Coon Rapids Office 201 85th Avenue N.W. Coon Rapids, MN 55433 (763) 783 1880 Fax: 783 1883