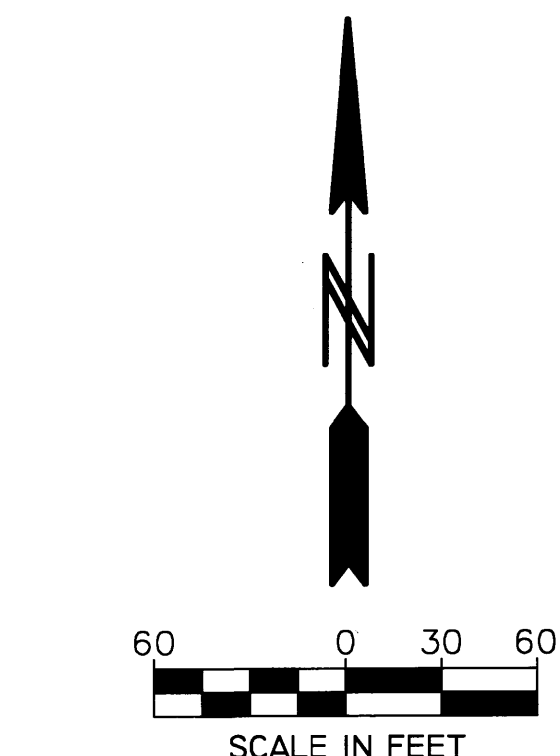
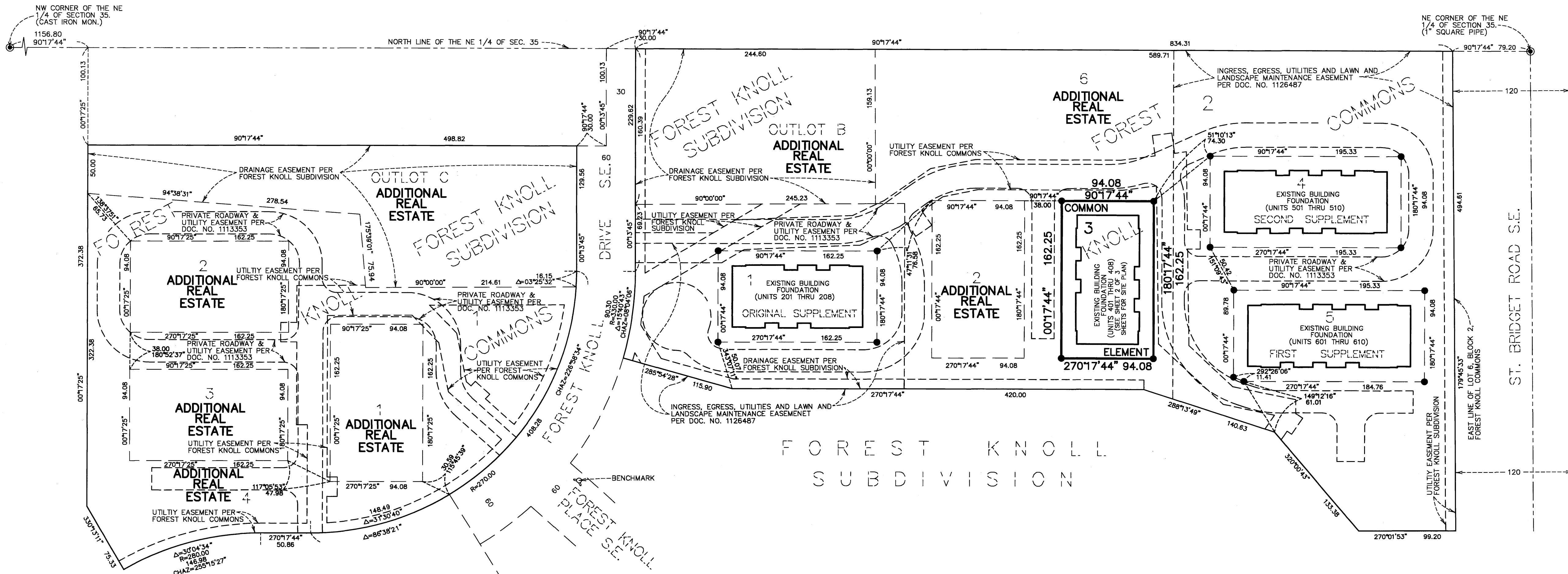


CIC NUMBER 313

A CONDOMINIUM FOREST KNOLL THIRD SUPPLEMENTAL CIC PLAT

This THIRD SUPPLEMENTAL CIC Plat is part of the Third Supplemental Declaration recorded as Document No. A-114350 on this 8th day of August, 2007.

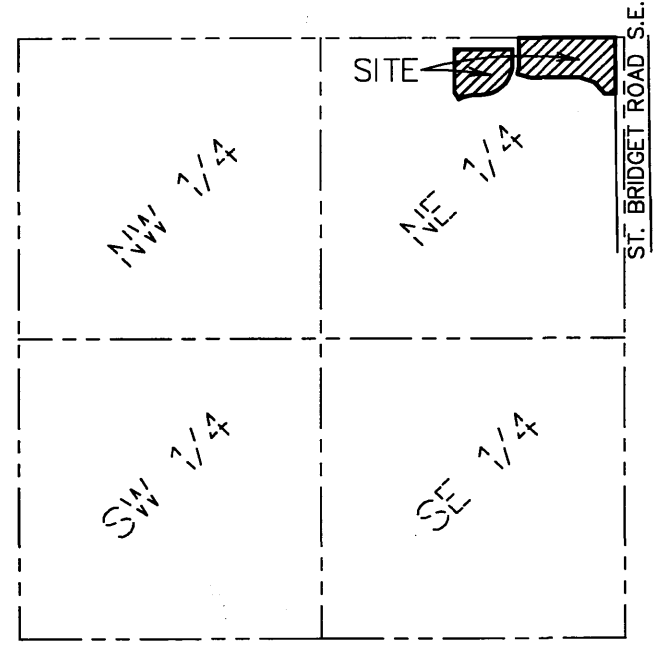
W. Mark Krupski
Director of Property Records and Licensing
Wendy von Wald
Deputy



BEARINGS ARE BASED ON THE EAST LINE OF LOT 6, BLOCK 2, FOREST KNOLL COMMONS WHICH IS ASSUMED TO HAVE A STATE PLANE GRID BASED AZIMUTH OF 179°45'33".

● DENOTES FOUND IRON MONUMENT

BENCH MARK: T.N.H. EAST QUADRANT OF FOREST KNOLL DRIVE S.E. AND FOREST KNOLL PLACE S.E. 20 FEET SOUTHEASTERLY OF THE SOUTHWEST CORNER OF LOT 2, BLOCK 1, FOREST KNOLL SUBDIVISION ELEV.=1119.00 FEET (N.G.V.D. 1929).



SECTION 35, TWP. 106, RGE. 14
LOCATION MAP
NO SCALE

I, John C. Larson, do hereby certify that the work was undertaken by or reviewed and approved by me for this THIRD SUPPLEMENTAL CIC Plat of CIC NUMBER 313, A CONDOMINIUM, FOREST KNOLL, located upon

Lot 3, Block 2, FOREST KNOLL COMMONS, according to the recorded plat thereof, Olmsted County, Minnesota and the additional real estate described as follows:

Lots 1, 2, 3, and 4, Block 1, and Lots 2, and 6, Block 2, said FOREST KNOLL COMMONS.

Together with:

Outlots B and C, FOREST KNOLL SUBDIVISION, according to the recorded plat thereof, Olmsted County, Minnesota.

fully and accurately depicts all information required by Minnesota Statutes, Section 515 B. 2-110, as amended.

Dated this 20 day of July, 2007

John C. Larson
John C. Larson, Professional Land Surveyor
Minnesota Registration No. 19828

STATE OF MINNESOTA
COUNTY OF Dakota

The foregoing instrument was acknowledged before me this 20 day of July, 2007, by John C. Larson, Registered Professional Land Surveyor.

NICHOLAS J KOLSRUD
NOTARY PUBLIC
MY COMM. EXP. 01/31/2010

Nicholas J. Kolsrud
Notary Public, Dakota County, Minnesota
My Commission Expires 1-31-2010

I, Peter J. Molinaro, pursuant to Minnesota Statutes, Section 515 B. 2-101 (c), do hereby certify that all structural components of the structures containing the units and the mechanical systems serving more than one unit, but not the units, are substantially completed.

Dated this 20 day of July, 2007.

Peter J. Molinaro
Peter J. Molinaro, Licensed Professional Engineer
Minnesota License No. 12677

STATE OF MINNESOTA
COUNTY OF Dakota

The foregoing instrument was acknowledged before me this 20 day of July, 2007, by Peter J. Molinaro, a Licensed Professional Engineer.

NICHOLAS J KOLSRUD
NOTARY PUBLIC
MY COMM. EXP. 01/31/2010

Nicholas J. Kolsrud
Notary Public, Dakota County, Minnesota
My Commission Expires 1-31-2010

OLMSTED COUNTY SURVEYOR

Pursuant to Minnesota Statutes, Chapter 389.09, Subd. 2, this CIC plat has been reviewed and approved this 8 day of August, 2007.

By: Edward P. Kenicle
Olmsted County Surveyor

PROPERTY RECORDS AND LICENSING

I hereby certify that the current and delinquent taxes on the lands described within are paid and the transfer is entered this 8th day of August, 2007.

Signed by: W. Mark Krupski
Director of Property Records & Licensing

Signed by: Wendy von Wald
Deputy

PIONEERengineering
CIVIL ENGINEERS LAND PLANNERS LAND SURVEYORS LANDSCAPE ARCHITECTS

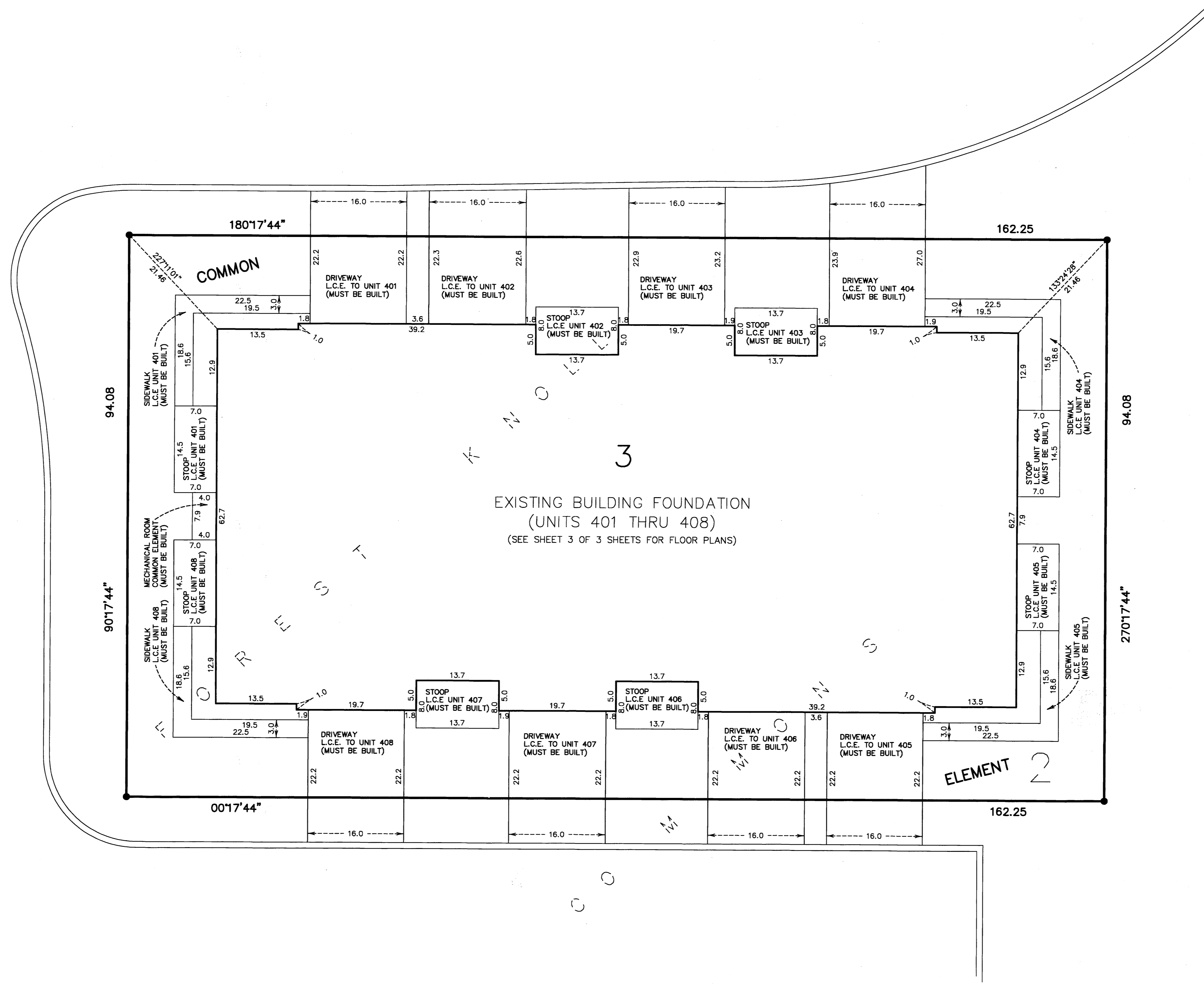
Mendota Heights Office
2422 Enterprise Drive
Mendota Heights, MN 55120
(651) 681 1914 Fax:681 9488

Coon Rapids Office
201 85th Avenue N.W.
Coon Rapids, MN 55433
(763) 783 1880 Fax:783 1883

1145A

CIC NUMBER 313

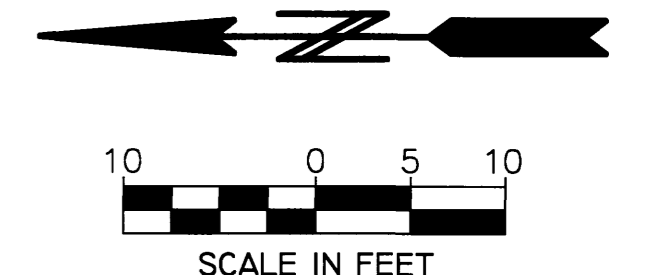
A CONDOMINIUM
FOREST KNOLL
THIRD SUPPLEMENTAL CIC PLAT



SITE PLAN

BEARINGS ARE BASED ON THE EAST LINE OF LOT 6, BLOCK 2, FOREST KNOLL COMMONS WHICH IS ASSUMED TO HAVE A STATE PLANE GRID BASED AZIMUTH OF 179°45'33".

● DENOTES FOUND IRON MONUMENT



PIONEERengineering
 CIVIL ENGINEERS LAND PLANNERS LAND SURVEYORS LANDSCAPE ARCHITECTS

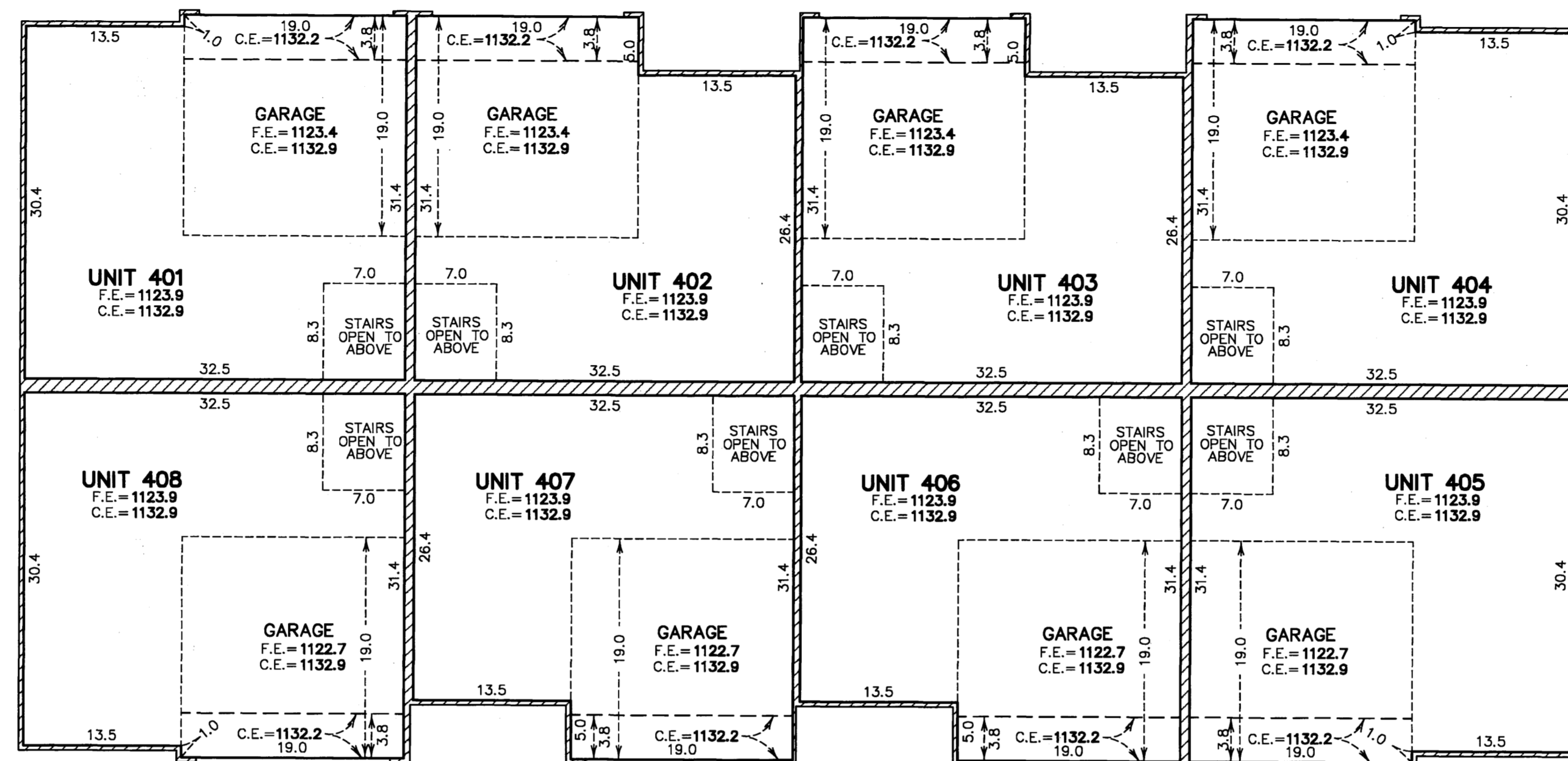
Mendota Heights Office
 2422 Enterprise Drive
 Mendota Heights, MN 55120
 (651) 681 1914 Fax: 681 9488

Coon Rapids Office
 201 85th Avenue N.W.
 Coon Rapids, MN 55433
 (763) 783 1880 Fax: 783 1883

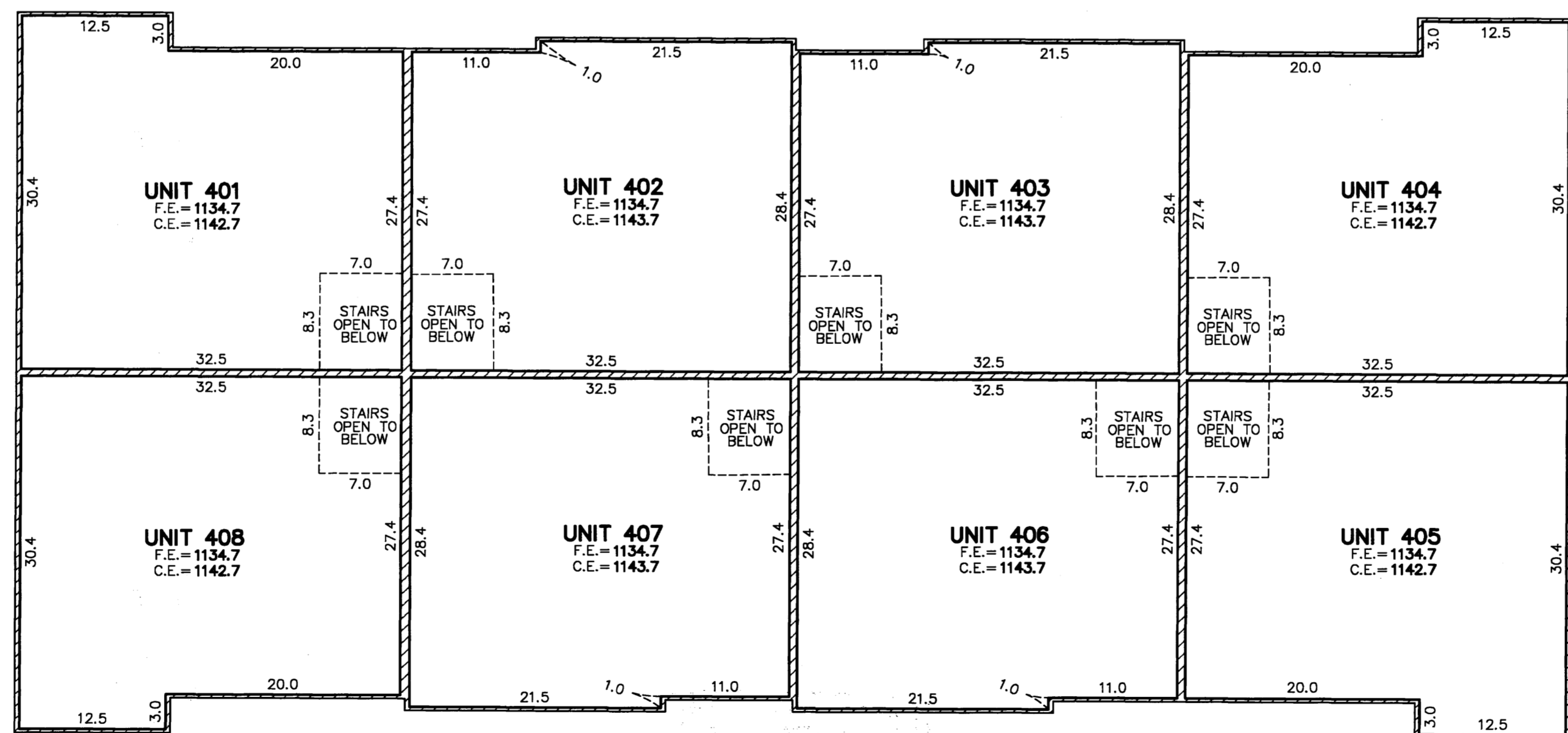
1145B

CIC NUMBER 313

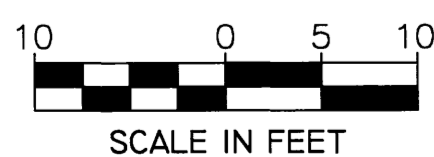
A CONDOMINIUM FOREST KNOLL THIRD SUPPLEMENTAL CIC PLAT



MAIN LEVEL
(AS-BUILT)



UPPER LEVEL
(AS-BUILT)



C. E. = CEILING ELEVATION
 F.E. = FLOOR ELEVATION
 L.C.E. = LIMITED COMMON ELEMENT
 ELEVATIONS ARE REFERENCED TO A BENCH MARK LISTED ON SHEET 1 OF 3 SHEETS

1145C

PIONEERengineering
 CIVIL ENGINEERS LAND PLANNERS LAND SURVEYORS LANDSCAPE ARCHITECTS
 Mendota Heights Office 2422 Enterprise Drive Mendota Heights, MN 55120 (651) 681 1914 Fax: 681 9488
 Coon Rapids Office 201 85th Avenue N.W. Coon Rapids, MN 55433 (763) 783 1880 Fax: 783 1883