

OFFICIAL PLAT

WHITE OAKS SECOND SUBDIVISION

Surveyor's Certificate

I hereby certify that I have surveyed and platted the property described on this plat as WHITE OAKS SECOND SUBDIVISION...

James E. Swanson, L.S. Minnesota License Number 11622

State of Minnesota County of Olmsted

The surveyor's certificate was subscribed and sworn to before me, a Notary Public, this 5th day of September, 1997.

Notary Public, Olmsted County, Minnesota

My commission expires: [Notary Seal]

County Surveyor

I certify that this plat has been checked mathematically and that the plat conforms to the applicable laws, this 16th day of September, 1997.

Edward P. Kniale, Olmsted County Surveyor

City Approval

State of Minnesota County of Olmsted City of Rochester

I, Judy K. Scherr, City Clerk, in and for the City of Rochester, do hereby certify that on the 18th day of August, 1997, the accompanying plat was duly approved by the Common Council of the City of Rochester.

Judy Kay Scherr, City Clerk

Tax Statements

Taxes payable in the year 1997 on the land herein described have been paid, there are no delinquent taxes and transfer has been entered this 7th day of October, 1997.

Bob Ryan, Olmsted County Auditor/Treasurer

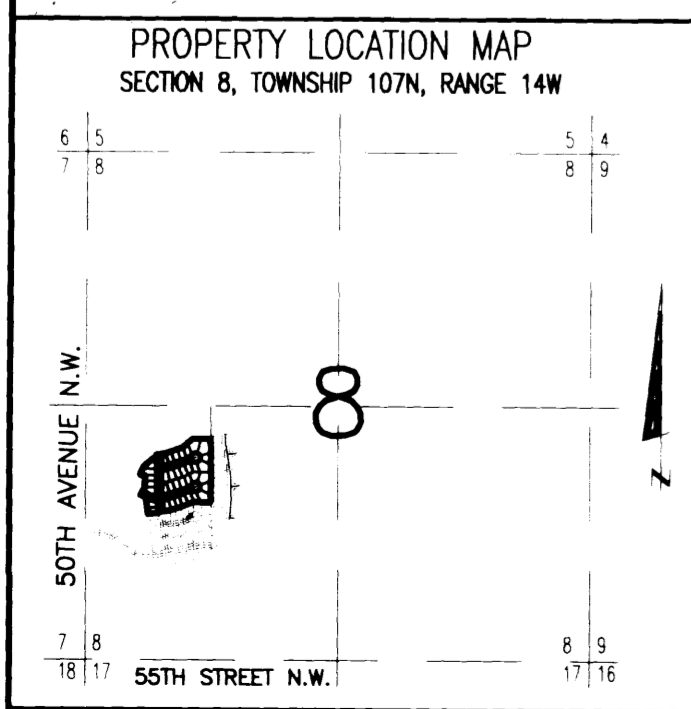
By [Signature] Deputy

County Recorder 762148 DOCUMENT NUMBER

I hereby certify that this instrument was filed in the office of the County Recorder for record on this 7th day of October, 1997, at 8 o'clock P.M., and was duly recorded in the Olmsted County records.

Daniel J. Hall, County Recorder

[Signature] Deputy



Instrument of Dedication

KNOW ALL MEN BY THESE PRESENTS: That Ronald L. Seeger and Theresa A. Seeger, husband and wife, Richard E. Rossi and Patricia J. Rossi, husband and wife, and Bettie E. Lang, Trustee of the Lang Trust under Declaration of Trust dated March 11, 1993, vendors of a recorded Contract for Deed, and White Oaks Development of Rochester, Inc., a Minnesota Corporation, vendees of a recorded Contract for Deed, being the owners and proprietors of the following described property situated in the City of Rochester, State of Minnesota, to wit:

That part of the West Half of the Southwest Quarter of Section 8, Township 107 North, Range 14 West, Olmsted County, Minnesota, described as follows:

Commencing at the northeast corner of said West Half, thence South 00 degrees 59 minutes 54 seconds West, assumed bearing, along the east line thereof, 341.01 feet for the point of beginning; thence continue South 00 degrees 59 minutes 54 seconds West, along said east line, 661.78 feet to the northeast corner of WHITE OAKS SUBDIVISION (the next five courses are along said northerly line); thence North 89 degrees 00 minutes 06 seconds West, 178.93 feet; thence South 71 degrees 59 minutes 05 seconds West, 273.43 feet; thence South 83 degrees 48 minutes 59 seconds West, 116.18 feet; thence southerly 5.64 feet along a nontangential curve, concave to the east, radius of 2528.01 feet, central angle of 00 degrees 07 minutes 40 seconds and the chord of said curve bears South 06 degrees 14 minutes 52 seconds East, 5.64 feet; thence South 83 degrees 41 minutes 18 seconds West not tangent to said curve, 110.30 feet; thence North 07 degrees 02 minutes 24 seconds West, 119.92 feet; thence North 00 degrees 58 minutes 41 seconds East, 44.66 feet; thence North 59 degrees 16 minutes 55 seconds West, 70.51 feet; thence North 30 degrees 43 minutes 05 seconds East, 94.60 feet; thence North 00 degrees 58 minutes 19 seconds East, 125.67 feet; thence North 89 degrees 01 minute 41 seconds West, 54.41 feet; thence North 25 degrees 51 minutes 41 second East, 99.98 feet; thence North 49 degrees 57 minutes 31 seconds East, 128.00 feet; thence South 89 degrees 01 minute 41 seconds East, 35.75 feet; thence northerly 40.42 feet along a nontangential curve, concave to the west, radius of 315.22 feet, central angle of 07 degrees 20 minutes 47 seconds and the chord of said curve bears North 02 degrees 42 minutes 05 seconds West, 40.39 feet; thence North 83 degrees 37 minutes 32 second East, not tangent to said curve, 98.92 feet; thence North 71 degrees 59 minutes 05 seconds East, 192.00 feet; thence North 51 degrees 58 minutes 15 seconds East, 140.59 feet; thence South 89 degrees 00 minutes 06 seconds East, 186.41 feet to the point of beginning.

Containing 9.88 acres more or less.

have caused the same to be surveyed and platted as WHITE OAKS SECOND SUBDIVISION and do hereby donate and dedicate to the public for the public use forever the thoroughfares and cul-de-sac and also dedicate the easements as shown on this plat for drainage and utility purposes only.

In witness where of said Ronald L. Seeger and Theresa A. Seeger, husband and wife, have caused these presents to be signed this 15th day of September, 1997.

Ronald L. Seeger, Theresa A. Seeger

State of Minnesota County of Olmsted

The foregoing instrument was acknowledged before me this 15th day of September, 1997, by Ronald L. Seeger and Theresa A. Seeger, husband and wife.

Kendrea Kim Moccia, Notary Public, Olmsted County, Minnesota

My commission expires 1-31-2000

In witness whereof said Richard E. Rossi and Patricia J. Rossi, husband and wife, have caused these presents to be signed this 15th day of September, 1997.

Richard E. Rossi, Patricia J. Rossi

State of Minnesota County of Olmsted Dodge

The foregoing instrument was acknowledged before me this 15th day of September, 1997, Richard E. Rossi and Patricia J. Rossi, husband and wife.

Beth Davis, Notary Public, Olmsted County, Minnesota Dodge 1-31-2000

In witness whereof said Bettie E. Lang, Trustee of the Lang Trust under Declaration of Trust dated March 11, 1993, has caused these presents to be signed this 10th day of September, 1997.

Bettie E. Lang, Trustee

State of Minnesota County of Dodge

The foregoing instrument was acknowledged before me this 10th day of September, 1997, by Bettie E. Lang, Trustee of the Lang Trust under Declaration of Trust dated March 11, 1993.

Beth Davis, Notary Public, Dodge County Minnesota 1-31-2000

In witness whereof said White Oaks Development of Rochester, Inc. has caused these presents to be signed by its proper officers, this 9th day of September, 1997.

Roger Carlsen, President, Jerry Nelson, Secretary-Treasurer

State of Minnesota County of Olmsted Dodge

The foregoing instrument was acknowledged before me this 9th day of September, 1997, by Roger Carlsen, President and Jerry Nelson, Secretary - Treasurer, officers of White Oaks Development of Rochester, Inc., a Minnesota Corporation, on behalf of the corporation.

Beth Davis, Notary Public, Olmsted County, Minnesota Dodge 1-31-2000

OFFICIAL PLAT

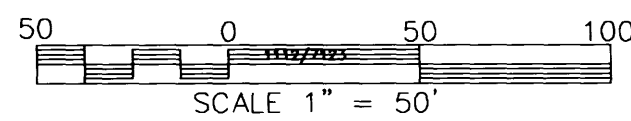
WHITE OAKS SECOND SUBDIVISION



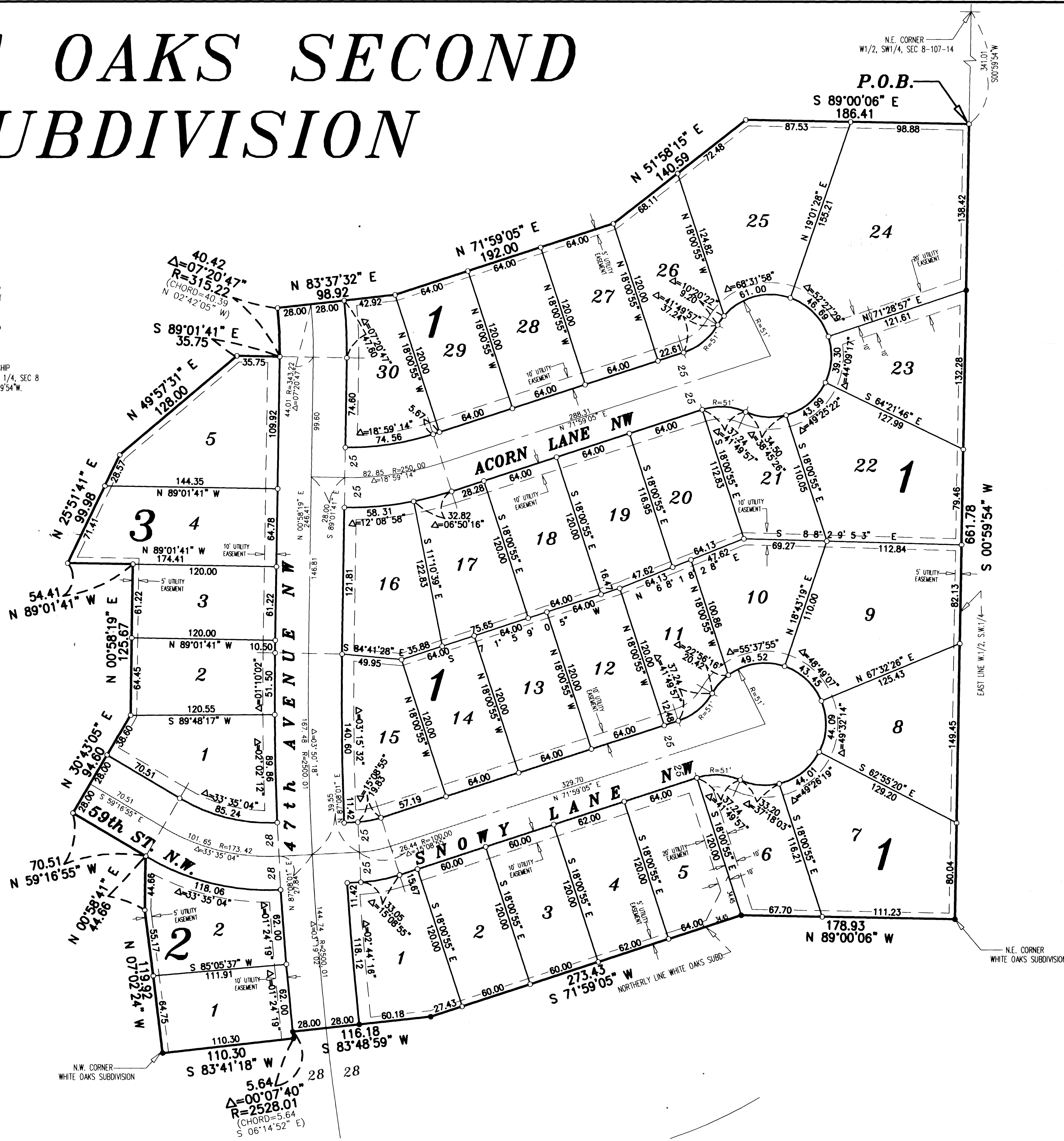
NOTE:
ALL MONUMENTS SHOWN THUS: ○
ARE 5/8" I.D. CAPPED PIPES SET
WITH REGISTRATION NO. 11622.

ALL MONUMENTS SHOWN THUS: ●
ARE FOUND 5/8" PIPE.

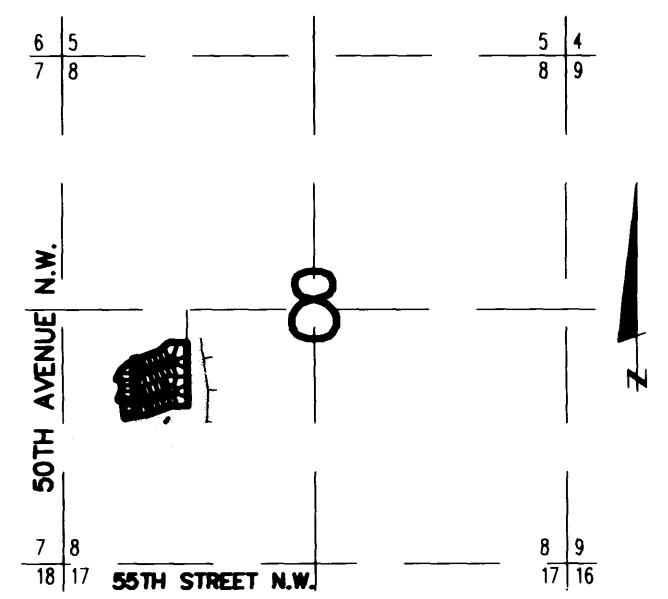
BASIS OF BEARING SYSTEM:
ALL BEARINGS ARE IN RELATIONSHIP
WITH THE EAST LINE W 1/2, SW 1/4, SEC 8
WHICH IS ASSUMED TO BE S00°59'54"W.



UTILITY EASEMENT defined:
An unobstructed easement for the construction
and maintenance of all necessary underground or
surface public utilities including rights to
conduct drainage and trimming on said easement.



PROPERTY LOCATION MAP
SECTION 8, TOWNSHIP 107N, RANGE 14W



PREPARED BY:
McGHEE & BETTS, INC.
CONSULTING ENGINEERS
PLANNERS, LAND SURVEYORS
ROCHESTER, MINNESOTA