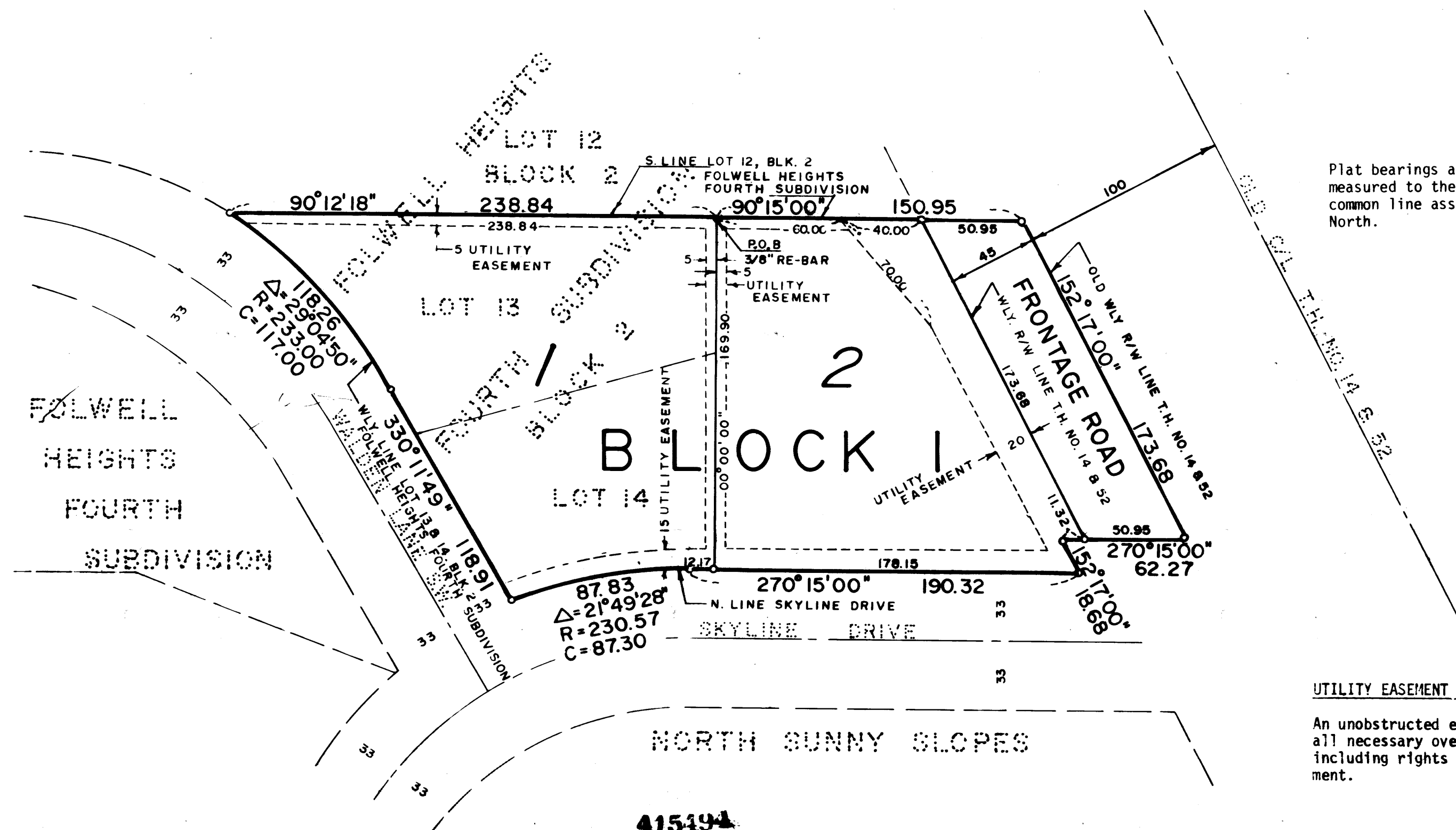
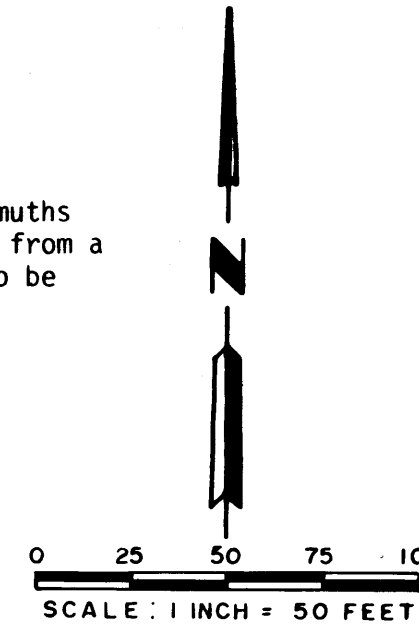


WALDEN SUBDIVISION



Plat bearings are azimuths measured to the right from a common line assumed to be North.



MONUMENTS
 ○ 3/4" IRON PIPES
 ● FOUND MONUMENT

All monuments set have a plastic cap stamped (R.L.S. 10162).

UTILITY EASEMENT DEFINED

An unobstructed easement for the construction and maintenance of all necessary overhead, underground, or surface public utilities, including rights to conduct drainage and trimming on said easement.

INSTRUMENT OF DEDICATION

KNOW ALL MEN BY THESE PRESENTS: That Homes by Erik, a Minnesota Corporation, owners and proprietors of the following described property situated in the County of Olmsted, State of Minnesota, to wit:

All of Lot 13 and Lot 14 of Block 2, Folwell Heights Fourth Subdivision, according to the plat thereof on file in the County Recorders Office, Olmsted County, Minnesota

And that A.B. Systems Incorporated, a Minnesota Corporation and Robert W. Weinrich and Nancy A. Weinrich, husband and wife, owners and proprietors of the following described property situated in the County of Olmsted, State of Minnesota, to wit:

That part of the Northwest Quarter of the Southeast Quarter of Section 3, Township 106 North, Range 14 West, Olmsted County, Minnesota described as follows:

Beginning at the Northeast corner of Lot 13, Block 2, Folwell Heights Fourth Subdivision; thence easterly on an assumed azimuth from north of 90 degrees 15 minutes 00 seconds along the south line of Lot 12, Block 2 of said Subdivision and an extension thereof 150.95 feet; thence southerly 152 degrees 17 minutes 00 seconds azimuth along the old westerly right-of-way line of State Highways No. 14 and 52 a distance of 173.68 feet; thence westerly 270 degrees 15 minutes 00 seconds azimuth along the right-of-way line of said Highway No. 14 and 52 a distance of 18.68 feet; thence westerly 270 degrees 15 minutes 00 seconds azimuth along the north line of Skyline Drive 178.15 feet; thence north 00 degrees 00 minutes 00 seconds azimuth along the easterly line of Lots 13 and 14, Block 2 of said Subdivision 169.90 feet to the point of beginning.

Have caused the same to be surveyed, platted and replatted as WALDEN SUBDIVISION and do hereby donate and dedicate to the public for public use forever the Frontage Road and grant the easements as shown on this plat.

In witness where of said Homes by Erik, a Minnesota Corporation, has caused these presents to be signed by its proper officers and its corporate seal to be hereunto affixed this 18th day of June, 1979 A.D.

Erik A. Danewick
 Erik A. Danewick
 President

Elmer A. Danewick
 Elmer A. Danewick
 Vice-President

State of Minnesota SS
 County of Olmsted

The foregoing instrument was acknowledged before me this 18th day of June, 1979 A.D. by Erik A. Danewick and Elmer A. Danewick, President and Vice-President, respectively, of Homes by Erik, a Minnesota Corporation, on behalf of the corporation.

Thomas F. Vagt
 Notary Public, Olmsted Co., MN

THOMAS F. VAGT
 Notary Public, Olmsted County, Minnesota
 My Commission Expires February 27, 1985
 My Commission Expires 2/27/85

In witness whereof said A.B. Systems Incorporated, a Minnesota Corporation has caused these presents to be signed by its proper officers and its corporate seal to be here unto affixed this 16th day of June, 1979 A.D.

Karl Schuller
 Karl Schuller
 President

Peter Schuller
 Peter Schuller
 Vice-President

State of Minnesota SS
 County of Olmsted

The foregoing instrument was acknowledged before me this 18th day of June, 1979 A.D. by Karl Schuller and Peter Schuller, President and Vice-President, respectively, of the A.B. Systems, Incorporated, a Minnesota Corporation, on behalf of the corporation.

Thomas F. Vagt
 Notary Public, Olmsted Co., MN

THOMAS F. VAGT
 Notary Public, Olmsted County, Minnesota
 My Commission Expires February 27, 1985
 My Commission Expires 2/27/85

In witness whereof we have hereunto set our hands this 18th day of June, 1979 A.D.

Robert W. Weinrich
 Robert W. Weinrich

Nancy A. Weinrich
 Nancy A. Weinrich

State of Minnesota SS
 County of Olmsted

The foregoing instrument was acknowledged before me this 18th day of June, 1979 A.D. by Robert W. Weinrich and Nancy A. Weinrich.

Thomas F. Vagt
 Notary Public, Olmsted Co., MN

THOMAS F. VAGT
 Notary Public, Olmsted County, Minnesota
 My Commission Expires February 27, 1985
 My Commission Expires 2/27/85

RECORDING DATA

Filed for record this 27 day of June, 1979 A.D., at 4:12 o'clock P.M. in book of plats, on pages

LOSS PREVENTION

Olmsted County Recorder
Carol M. Baker
 Deputy

TAX STATEMENT

No delinquent taxes due and transfer entered this 27th day of June, 1979 A.D.

Carol M. Baker
 Olmsted County Auditor
 Deputy

CITY APPROVAL

State of Minnesota SS
 County of Olmsted
 City of Rochester

I, Carol A. Grimm, City Clerk in and for the City of Rochester, Minnesota, do hereby certify that on the 18 day of June, 1979 A.D., the accompanying plat was duly approved by the Common Council of the City of Rochester. In testimony thereof I have here unto signed my name and affixed the Seal of said City of Rochester this 26 day of June, 1979 A.D.

Carol A. Grimm
 City Clerk

COUNTY SURVEYOR

I certify that this plat has been checked mathematically and that the plat conforms to the applicable platting laws

Approved this 18th day of June, 1979 A.D.

Robert W. Brand
 Olmsted County Surveyor

SURVEYOR'S CERTIFICATE

I do hereby certify that I have surveyed and platted the property described on this plat as WALDEN SUBDIVISION that this plat is a correct representation of said survey, that all distances are correctly shown on said plat in feet and hundredths of a foot, that all monuments have been correctly placed in the ground as shown, that the outside boundary lines are correctly designated and that there are no wetlands or public highways to be designated on said plat other than as shown.

Donald R. Borcharding
 Minnesota R.L.S. No. 10162

State of Minnesota SS
 County of Olmsted

The foregoing Surveyor's Certificate was acknowledged before me this 18 day of June, 1979 A.D. by Donald R. Borcharding, Minnesota R.L.S. No. 10162.

Thomas F. Vagt
 Notary Public, Olmsted County, Minn.
 My Commission Expires 2-27-85

PREPARED BY
YAGGY ASSOCIATES, INC.
 CONSULTING ENGINEERS
 ROCHESTER, MINNESOTA