

LOHUIS THIRD SUBDIVISION



BEARINGS

Plat bearings are azimuths measured to the right from an assumed North.

UTILITY EASEMENT DEFINED

An unobstructed easement for the construction and maintenance of all necessary overhead, underground or surface public utilities, including rights to conduct drainage and trimming on said easement.

DRAINAGE EASEMENT DEFINED

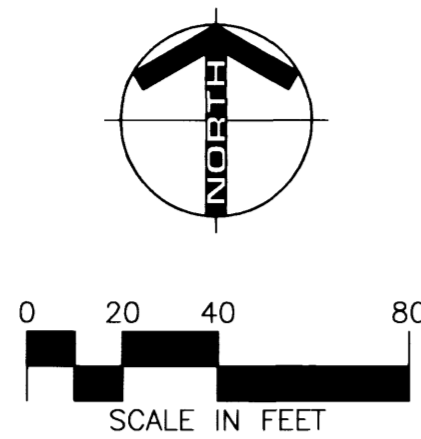
An unobstructed easement for the construction and maintenance of underground and surface drainage facilities and utility easement.

CONTROLLED ACCESS DEFINED

Ingress and egress to, from or across the abutting roadway is restricted by the road authority pursuant to Minnesota State Statute 160.08.

U.E. = UTILITY EASEMENT

D.E. = DRAINAGE EASEMENT



MONUMENTS

- 1/2" Rebars
- 3/4" Iron Pipes
- Found Monuments (Pipe, Rod, Etc.)
- No Monuments Found or Set

All monuments set have a plastic cap stamped L.S. 22422.

INSTRUMENT OF DEDICATION

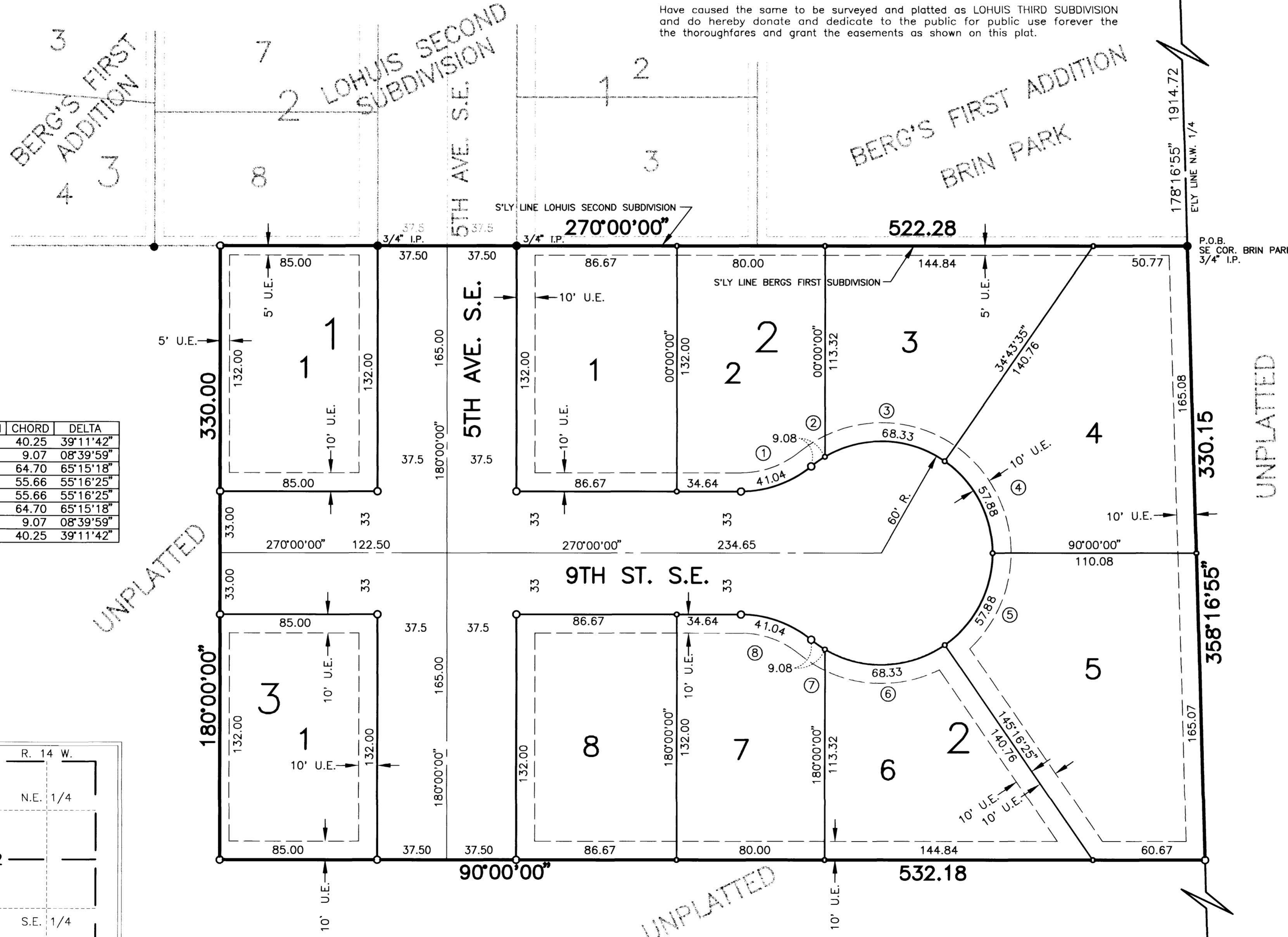
KNOW ALL MEN BY THESE PRESENTS: That Robert D. Lohuis and Suzanne R. Lohuis, husband and wife, owners and proprietors of the following described property situated in the County of Olmsted, State of Minnesota, to wit:

That part of the Southeast Quarter of the Northwest Quarter of Section 2, Township 104 North, Range 14 West, Olmsted County, Minnesota, described as follows:

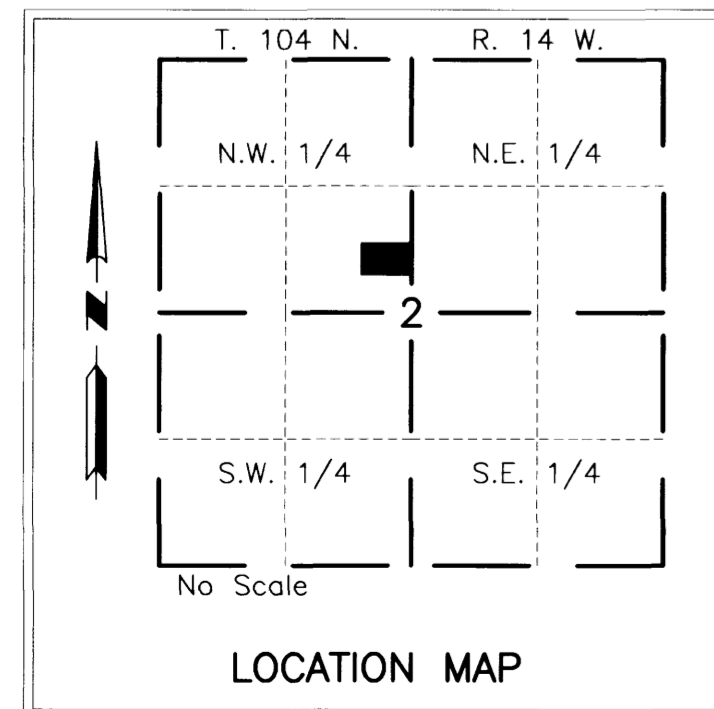
Commencing at the northeast corner of said Northwest Quarter; thence southerly on an assumed azimuth from north of 178 degrees 16 minutes 55 seconds along the east line of said Northwest Quarter 1914.72 feet to the southeasterly corner of Brin Park of Berg's First Subdivision, according to the plat thereof on file at the County Recorder's Office, Olmsted County, Minnesota and the point of beginning; thence westerly 270 degrees 00 minutes 00 seconds along the southerly line of said Berg's First Addition and the southerly line of Lohuis Second Subdivision according to the plat thereof on file at the County Recorder's Office, Olmsted County, Minnesota a distance of 522.28 feet; thence southerly 180 degrees 00 minutes 00 seconds azimuth 330.00 feet; thence easterly 90 degrees 00 minutes 00 seconds azimuth 532.18 feet to the east line of said Northwest Quarter; thence northerly 358 degrees 16 minutes 55 seconds along said east line 330.15 feet to the point of beginning.

Said tract contains 3.99 acres more or less.

Have caused the same to be surveyed and platted as LOHUIS THIRD SUBDIVISION and do hereby donate and dedicate to the public for public use forever the thoroughfares and grant the easements as shown on this plat.



CURVE	RADIUS	LENGTH	CHORD	DELTA
1	60.00	41.04	40.25	39°11'42"
2	60.00	9.08	9.07	08°39'59"
3	60.00	68.33	64.70	65°15'18"
4	60.00	57.88	55.66	55°16'25"
5	60.00	57.88	55.66	55°16'25"
6	60.00	68.33	64.70	65°15'18"
7	60.00	9.08	9.07	08°39'59"
8	60.00	41.04	40.25	39°11'42"



In witness whereof, said Robert D. Lohuis and Suzanne R. Lohuis, have hereunto set their hands this 18th day of August, 1997.

STATE OF MINNESOTA
COUNTY OF OLMTED

The foregoing instrument was acknowledged before me this 18th day of August, 1997, by Robert D. Lohuis and Suzanne R. Lohuis.

Cheryl Roeder
Notary Public, Olmsted County, MN
My Commission Expires 1-31-2001

COUNTY AUDITOR/TREASURER
Taxes payable in the year 1997 on the land herein described have been paid, there are no delinquent taxes and transfer has been entered this 20th day of Aug, 1997.

Bob Ryan
Olmsted County Auditor/Treasurer
By *Sawn Mandy* Deputy

COUNTY RECORDER
Document Number 759501

I hereby certify that this instrument was filed in the Office of the County Recorder for record on this 20 day of August, 1997, at 12 o'clock p.m. and was duly recorded in Olmsted County Records.

Daniel J. Weil
Olmsted County Recorder
Christine L. Brown, Deputy

COUNTY SURVEYOR
I certify that this plat has been checked mathematically and that the plat conforms to applicable platting laws.

This 19 day of August, 1997
Edward P. Kuisle
Edward P. Kuisle
Olmsted County Surveyor

CITY APPROVAL
STATE OF MINNESOTA
COUNTY OF OLMTED
CITY OF STEWARTVILLE

We do hereby certify that on the 22nd day of July, 1997, the accompanying plat was duly approved by the Common Council of the City of Stewartville. In testimony whereof, we have hereunto signed our names this 18th day of August, 1997.

Leigh J. Murphy
Leigh J. Murphy, Mayor
Larry Hansen
Larry Hansen
Clerk-Administrator

SURVEYOR'S CERTIFICATE
I do hereby certify that I have surveyed and platted the property described on this plat as LOHUIS THIRD SUBDIVISION, that this plat is a correct representation of said survey, that all distances are correctly shown on said plat in feet and hundredths of a foot, that all monuments have been correctly placed in the ground as shown or will be correctly placed in the ground as designated; that the outside boundary lines are correctly designated; and that there are no wetlands as defined in MS 505.02, Subd. 1, or public highways to be designated on said plat other than as shown.

Douglas G. Rude
Douglas G. Rude
Minnesota L.S. No. 22422

STATE OF MINNESOTA
COUNTY OF OLMTED
The foregoing Surveyor's Certificate was acknowledged before me this 14th day of August, 1997, by Douglas G. Rude, L.S. No. 22422.

Kathryn M. Malloy
Notary Public - Minnesota
My Commission Expires 1-31-2000

PROJECT NUMBER: 5279-97
COMPUTER FILE: 5279SF01.DWG
DATE: 02/18/97
DRAFTSPERSON: R.A.S.