

# CRAVATH'S FIRST ADDITION

## OLMSTED COUNTY, MINNESOTA

### SURVEYOR'S CERTIFICATE

I, K.M. McGhie, Registered Civil Engineer and Land Surveyor do hereby certify that at the request of **KENNETH C. CRAVATH** I have surveyed and platted into lots, blocks, streets, and easements as shown on the accompanying plat on which this certificate is written and which shall be known and designated as **CRAVATH'S FIRST ADDITION**, the following described tract of land:

A part of the NW 1/4 of Sec. 20-T10BN-R14W, described by metes and bounds as follows: Commencing at the N.E. Corner of said N.W. 1/4, thence west along the north line of said N.W. 1/4 a distance of 1582.8 feet for a place of beginning, thence south at a deflection angle of 90 degrees 29 minutes to the left for a distance of 1309.65 feet, thence west at a deflection angle of 90 degrees 29 minutes to the right for a distance of 528.0 feet, thence north at a deflection angle of 89 degrees 31 minutes to the right for a distance of 1309.65 feet, thence east at a deflection angle of 90 degrees 29 minutes to the right for a distance of 528.0 feet to the place of beginning.

And I further certify that said plat is a true and correct record of the survey, and that all distances are correctly shown in feet and decimals of feet, that monuments (iron pins) have been placed on the ground, for the guidance of future surveys, as shown on the plat thus (o), that the outside boundaries are correctly shown on the plat, that there are no wet lands thereon and that said plat has not been previously platted.

Dated this 19 day of Aug. 1959 A.D.

K.M. McGhie  
K.M. McGhie, Registered Civil Engineer and Land Surveyor Reg. No. 1613

Subscribed and sworn to me a Notary Public this 19<sup>th</sup> day of August 1959 A.D.  
My commission expires April 8, 1964.

Vivian Ashcroft  
Notary Public, Olmsted County, Minnesota

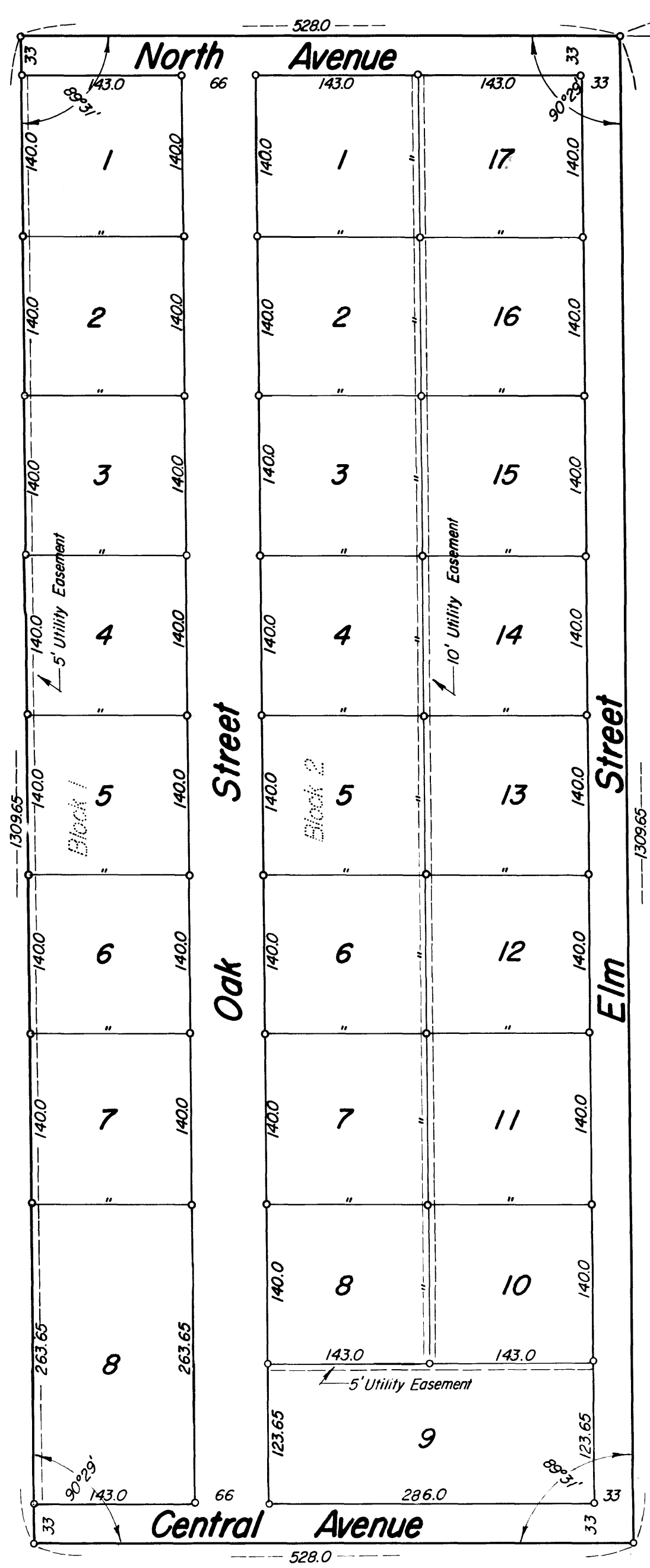
We, the members of the Executive Committee of the Olmsted County Planning Commission do hereby certify that we have examined the above plat and find that it conforms to the provisions of the Zoning Ordinance of the County of Olmsted.

Ch. J. Nahulka  
Chairman of Commission

We, the members of the Township Board of Supervisors for Oranoco Township, Olmsted County, Minnesota, do certify that we have approved the accompanying plat. In testimony whereof we have signed our names this 5<sup>th</sup> day of October 1959 A.D.

Signed:  
Alfred P. McKee  
Chairman  
George Wittel  
Supervisor  
Alex H. Kolnig  
Supervisor

Scale: 1" = 100'



Utility Easement Defined:  
Easement for construction and maintenance of electric power and telephone lines and trimming rights for said maintenance.

### DEDICATION

We, the undersigned, **KENNETH C. CRAVATH** and **ALYCE M. CRAVATH**, his wife, and **OTTO R. BAKER**, and **THEODORE H. BAKER**, do hereby certify that we are the sole interested parties in the parcel of land described in the foregoing Surveyor's Certificate, that we have caused the same to be surveyed and platted into lots, blocks, and streets under the name of **CRAVATH'S FIRST ADDITION** as shown on the accompanying plat on which this instrument is written, and that we hereby dedicate to the public for public use forever the streets shown thereon.

In the presence of:  
E. R. Sawyer  
R. B. Pearson

Signed:  
Kenneth C. Cravath  
Kenneth C. Cravath  
Alyce M. Cravath  
Alyce M. Cravath  
Otto R. Baker  
Otto R. Baker  
Theodore H. Baker  
Theodore H. Baker

State of Minnesota } s.s.  
County of Olmsted }  
On this 18 day of September 1959 before me a Notary Public in and for said county, personally appeared **KENNETH C. CRAVATH** and **ALYCE M. CRAVATH**, his wife, and **OTTO R. BAKER** and **THEODORE H. BAKER**, to me known to be the persons described in and who executed the foregoing instrument and acknowledged that they executed the same as their free act and deed.

My commission expires May 6 1960  
James Jester  
Notary Public, Olmsted County, Minn.

I hereby approve this plat as to water supply and sewage disposal this 5<sup>th</sup> day of October 1959  
Walter C. Wilson, M.D.  
Rochester Olmsted County Health Unit

State of Minnesota } s.s.  
County of Olmsted }  
I, Ross E. Browning, County Auditor in and for said county do hereby certify that the annexed plat was duly approved by the Board of County Commissioners at a meeting held on 23 day of Oct 1959, in testimony whereof I have signed and affixed the seal of said county this 5 day of Jan 1960

Ross Browning  
County Auditor

Taxes paid and transfer entered this 5 day of Jan 1960 A.D.  
Ross Browning  
County Auditor

Taxes for the year 1959 on the lands described within paid.  
Karl H. Postier  
Maria L. Heggen, Deputy  
County Treasurer

State of Minnesota } s.s.  
County of Olmsted }  
Filed for record this 5<sup>th</sup> day of January 1960 A.D. Instrument No. \_\_\_\_\_ at 7:21 M.  
Harry H. Evans  
Register of Deeds  
Said Enclaves, Deputy