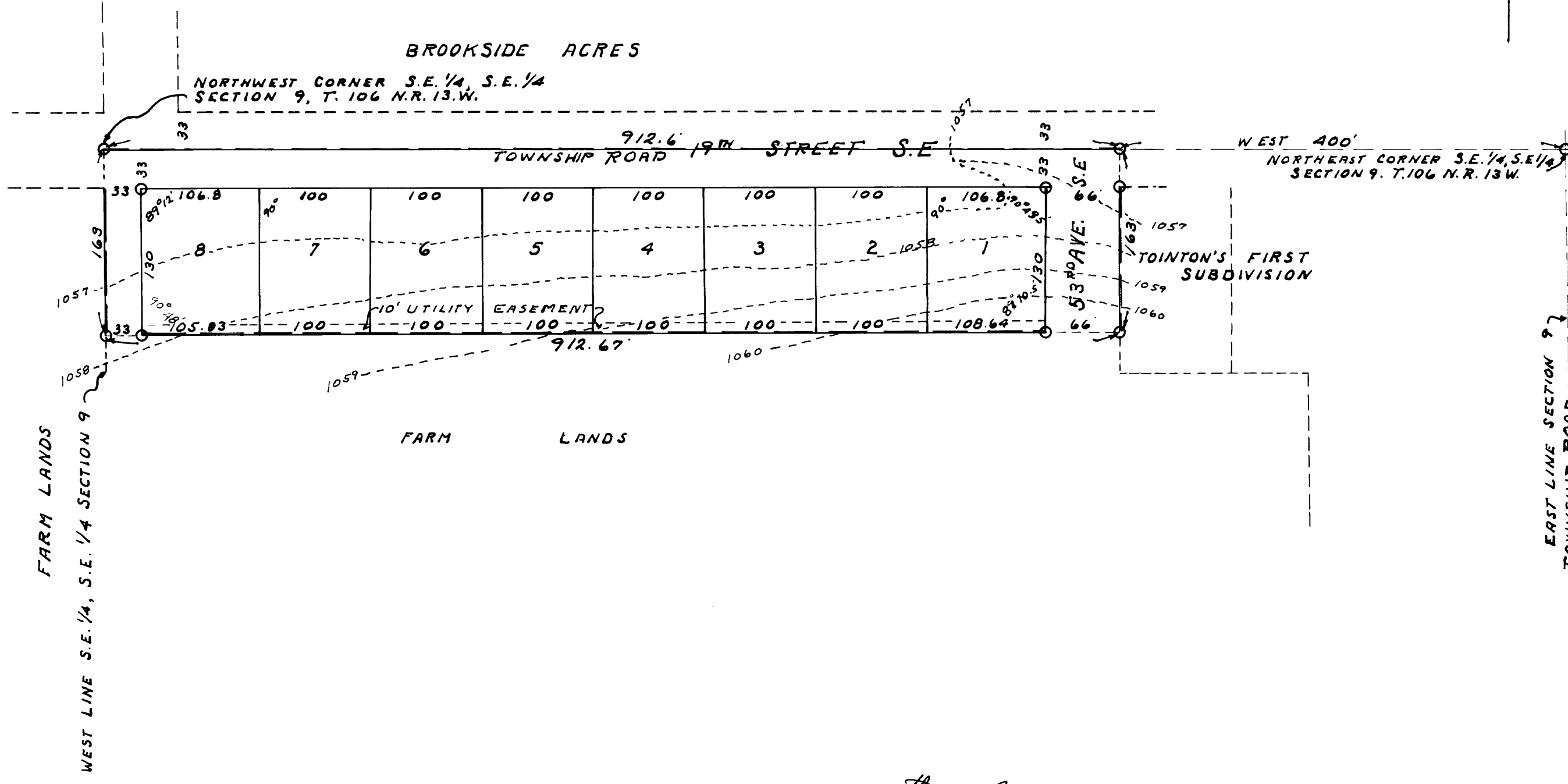
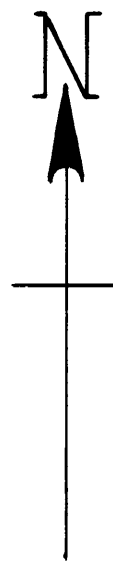


# TOINTON'S SECOND SUBDIVISION.

OLMSTED COUNTY, MINNESOTA.  
 BOUNDARY LINES SHOWN THUS ———  
 MONUMENTS SHOWN THUS ○  
 SCALE 1 INCH = 100 FEET.

1959.  
 John J. Kerr COUNTY SURVEYOR.  
 REGISTERED LAND SURVEYOR NO. 238.



APPROVED AS TO SEWAGE DISPOSAL AND WATER SUPPLY THIS 17<sup>th</sup> DAY OF November, 1959  
 ROCHESTER OLMSTED COUNTY HEALTH UNIT.  
 BY Victor O. Wilson, M.D. HEALTH OFFICER.

APPROVED THIS 30<sup>th</sup> DAY OF November, A.D. 1959, BOARD OF SUPERVISORS  
 MARION TOWNSHIP, OLMSTED COUNTY, MINNESOTA. (APPROVED UNDER 1945 M.S.A.  
 349.12 AND OVERRULING THE OLMSTED COUNTY PLANNING COMMISSION.  
 BY Paul Rubow CHAIRMAN.  
Wm O'Neill SUPERVISOR.  
Robert Salomon SUPERVISOR.

## DEDICATION.

KNOW ALL MEN BY THESE PRESENTS THAT CARLTON F. PENZ AND RUTH E. PENZ, HIS WIFE, OWNERS AND PROPRIETORS OF THE FOLLOWING DESCRIBED PROPERTY SITUATE IN THE STATE OF MINNESOTA AND COUNTY OF OLMSTED TO WIT: ALL THAT PART OF THE SOUTHEAST 1/4 OF SECTION 9, TOWNSHIP 106, NORTH OF RANGE 13 WEST ACCORDING TO THE UNITED STATES GOVERNMENT SURVEY THEREOF DESCRIBED AS FOLLOWS; COMMENCING AT THE NORTHEAST CORNER OF SAID SOUTHEAST 1/4 AND RUNNING THENCE WEST ALONG THE NORTH LINE THEREOF A DISTANCE OF 400 FEET FOR A PLACE OF BEGINNING SAID PLACE OF BEGINNING BEING IN THE CENTER LINE OF 19<sup>TH</sup> STREET SOUTHEAST AND THE EAST LINE OF 53RD AVENUE SOUTHEAST, RUNNING THENCE SOUTH PARALLEL WITH THE EAST LINE OF SAID SECTION A DISTANCE OF 163 FEET, THENCE WEST PARALLEL WITH THE NORTH LINE OF SAID SOUTHEAST 1/4 A DISTANCE OF 912.67 FEET TO THE WEST LINE THEREOF, THENCE NORTH A DISTANCE OF 163 FEET TO THE NORTHWEST CORNER THEREOF, THENCE EAST A DISTANCE OF 912.6 FEET TO THE PLACE OF BEGINNING, HAVE CAUSED THE SAME TO BE SURVEYED AS "TOINTON'S SECOND SUBDIVISION", AND DO HEREBY DONATE AND DEDICATE TO THE PUBLIC FOR THE PUBLIC USE THE STREETS AND AVENUES AS SHOWN ON THE ANNEXED PLAT, AND ALSO THE UTILITY EASEMENTS AS SHOWN ON THE ANNEXED PLAT FOR THE USE OF MUNICIPALITY OR OTHER PUBLIC UTILITIES FOR THE INSTALLATION AND MAINTENANCE OF FACILITIES IN AND OVER SAID EASEMENTS TO SERVE ADJACENT OR OTHER PREMISES IN THE VICINITY. IN WITNESS WHEREOF WE HAVE HEREUNTO SET OUR HANDS AND SEALS THIS 7<sup>th</sup> DAY OF DECEMBER, A.D. 1959.

IN THE PRESENCE OF:  
Kenneth Laudon WITNESS. Carlton F. Penz CARLTON F. PENZ  
Dwight W. Rieke WITNESS. Ruth E. Penz RUTH E. PENZ  
Norman Robert Hagstrom

## ACKNOWLEDGEMENT.

STATE OF MINNESOTA,  
 COUNTY OF OLMSTED, S. S.  
 ON THIS 7<sup>th</sup> DAY OF DECEMBER, A.D. 1959, BEFORE ME A NOTARY PUBLIC,  
 PERSONALLY APPEARED CARLTON F. PENZ AND RUTH E. PENZ, HIS WIFE, TO ME KNOWN TO BE THE PERSONS  
 DESCRIBED IN AND WHO EXECUTED THE FOREGOING INSTRUMENT, AND THEY ACKNOWLEDGED THAT THEY EXECUTED  
 THE SAME AS THEIR OWN FREE ACT AND DEED.  
Norman Robert Hagstrom NOTARY PUBLIC, OLMSTED COUNTY, MINNESOTA.  
 MY COMMISSION EXPIRES AUGUST 3, 1966.

## SURVEYORS CERTIFICATE.

STATE OF MINNESOTA,  
 COUNTY OF OLMSTED, S. S.  
 I, JOHN J. KERR COUNTY SURVEYOR IN AND FOR SAID COUNTY DO HEREBY CERTIFY THAT I HAVE SURVEYED  
 AND PLATTED THE PROPERTY DESCRIBED ON THIS PLAT AS TOINTON'S SECOND SUBDIVISION, THAT THE PLAT  
 IS A CORRECT REPRESENTATION OF SAID SURVEY, THAT ALL DISTANCES ARE CORRECTLY SHOWN ON THE PLAT.  
 IN FEET AND DECIMALS OF A FOOT, THAT MONUMENTS FOR THE GUIDANCE OF FUTURE SURVEYS ARE CORRECTLY  
 PLACED IN THE GROUND AS SHOWN ON THE PLAT, THAT THE OUTSIDE BOUNDARIES ARE CORRECTLY DESIGNATED  
 ON THE PLAT, THAT THE TOPOGRAPHY OF THE LAND IS CORRECTLY SHOWN ON THE PLAT, THAT THERE ARE NO  
 WET LANDS OR PUBLIC HIGHWAYS TO BE DESIGNATED ON SAID PLAT OTHER THAN AS SHOWN THEREON.  
John J. Kerr COUNTY SURVEYOR.  
 MINNESOTA REGISTERED LAND SURVEYOR NO. 238.

STATE OF MINNESOTA,  
 COUNTY OF OLMSTED, S. S.  
 THE ABOVE CERTIFICATE SUBSCRIBED AND SWORN TO BEFORE ME A NOTARY PUBLIC,  
 THIS 7<sup>th</sup> DAY OF DECEMBER, A.D. 1959.  
Norman Robert Hagstrom NOTARY PUBLIC, OLMSTED COUNTY, MINNESOTA.  
 MY COMMISSION EXPIRES AUGUST 3, 1966.

STATE OF MINNESOTA,  
 COUNTY OF OLMSTED, S. S.  
 I, ROSS BROWNING COUNTY AUDITOR IN AND FOR SAID COUNTY DO HEREBY CERTIFY THAT THE ATTACHED  
 PLAT WAS DULY APPROVED BY THE BOARD OF COUNTY COMMISSIONERS AT A MEETING HELD ON THIS 8<sup>th</sup> DAY  
 OF DECEMBER, A.D. 1959, IN TESTIMONY WHEREOF I HAVE SIGNED MY NAME AND AFFIXED THE  
 SEAL OF SAID COUNTY THIS 8<sup>th</sup> DAY OF DECEMBER, A.D. 1959.  
Ross Browning COUNTY AUDITOR.

TAXES PAID FOR THE YEAR OF 1957.  
Paul A. Peterson COUNTY TREASURER.

TAXES PAID AND TRANSFER ENTERED THIS 10<sup>th</sup> DAY OF DECEMBER, A.D. 1959.  
Ross Browning COUNTY AUDITOR.

STATE OF MINNESOTA,  
 COUNTY OF OLMSTED, S. S.  
 FILED FOR RECORD THIS 11<sup>th</sup> DAY OF DECEMBER, A.D. 1959 AT 11:20-CLOCK P. M.  
 AND RECORDED IN BOOK OF PLATS PAGE

Harry H. Swann REGISTER OF DEEDS.  
Mary B. Smyth, Deputy