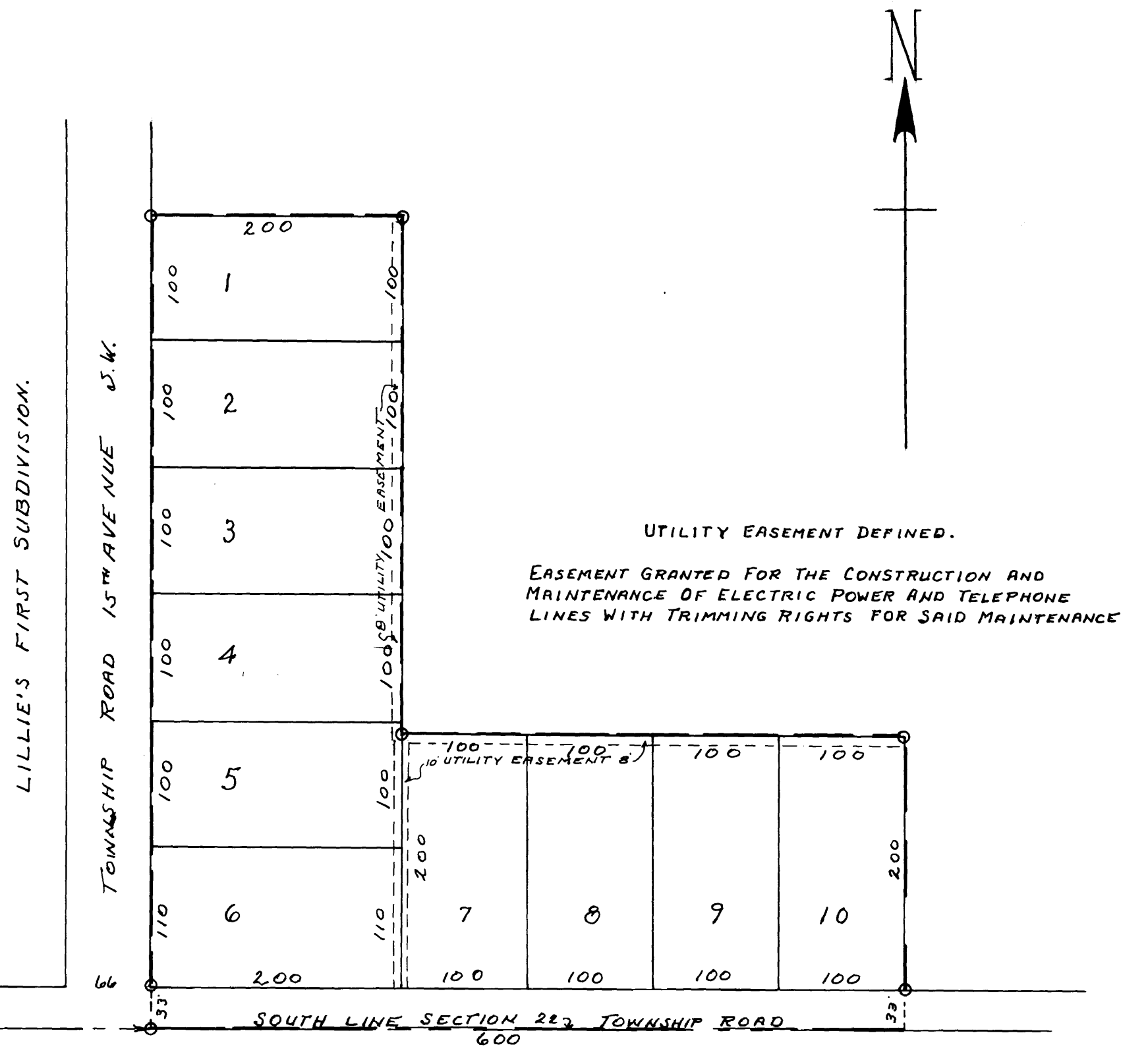


LILLIE'S SECOND SUBDIVISION.

OLMSTED COUNTY, MINNESOTA.

PROPERTY BOUNDARIES SHOWN THUS ——— .
 MONUMENTS SHOWN THUS O .
 SCALE 1 INCH = 100 FEET .
 1959.

John J. Kerr COUNTY SURVEYOR.
 REGISTERED LAND SURVEYOR NO. 238.



APPROVED AS TO WATER SUPPLY AND SEWAGE DISPOSAL
 THIS 3RD DAY OF August 1959.
 BY *Viktor C. Wilson, MD* HEALTH OFFICER.
 ROCHESTER, OLMSTED COUNTY HEALTH UNIT.

APPROVED THIS 6TH DAY OF August 1959.
 OLMSTED COUNTY PLANNING COMMISSION.

BY *Ed. J. Rabeck* CHAIRMAN.

APPROVED THIS 7TH DAY OF August 1959.
 BOARD OF SUPERVISORS, ROCHESTER TOWNSHIP.

Robert Bergeson CHAIRMAN.

Alfred Munsberg SUPERVISOR.

Ed. J. Rabeck SUPERVISOR.

SURVEYORS CERTIFICATE.

STATE OF MINNESOTA,
 COUNTY OF OLSTED, S. S.
 I, JOHN J. KERR COUNTY SURVEYOR IN AND FOR SAID COUNTY DO HEREBY CERTIFY THAT AT THE REQUEST OF JOSEPH D. LILLIE AND MARY E. LILLIE (HIS WIFE) OWNERS OF THE FOLLOWING DESCRIBED LANDS: COMMENCING AT THE SOUTHWEST CORNER OF THE SOUTHEAST 1/4 OF SECTION 22, TOWNSHIP 106, NORTH OF RANGE 14 WEST AND RUNNING THENCE EAST ALONG THE SOUTH LINE OF SAID SECTION A DISTANCE OF 660.61 FEET FOR A PLACE OF BEGINNING, THENCE NORTH PARALLEL WITH THE WEST LINE OF SAID SOUTHEAST 1/4 A DISTANCE OF 643 FEET, THENCE EAST PARALLEL WITH SAID SOUTH LINE A DISTANCE OF 200 FEET, THENCE SOUTH PARALLEL WITH SAID WEST LINE A DISTANCE OF 410 FEET, THENCE EAST A DISTANCE OF 400 FEET, THENCE SOUTH A DISTANCE OF 233 FEET TO A POINT IN THE SOUTH LINE OF SAID SECTION, THENCE WEST ALONG SAID SOUTH LINE A DISTANCE OF 600 FEET TO THE PLACE OF BEGINNING, I HAVE SURVEYED AND PLATTED SAID LANDS INTO LOTS AND A PUBLIC ROAD SUCH SUBDIVISION TO BE KNOWN AND DESIGNATED AS "LILLIE'S SECOND SUBDIVISION", I FURTHER CERTIFY THAT THE ACCOMPANYING PLAT IS A TRUE REPRESENTATION OF SAID SURVEY AS MADE, THAT MEASUREMENTS ARE SHOWN IN FEET AND DECIMALS OF A FOOT, THAT MONUMENTS FOR THE GUIDANCE OF FUTURE SURVEYS HAVE BEEN PLACED IN THE GROUND AT THE LOCATIONS MARKED THUS O, THAT THERE ARE NO WET LANDS THEREON, THAT SAID LANDS HAVE NOT HERETOFORE BEEN PLATTED, THAT ANGLES OF ENCLOSURE ARE SHOWN, AND THAT LAND TIES TO SECTION CONTROL POINTS ARE GIVEN. DATED THIS 1ST DAY OF AUGUST A.D. 1959.

John J. Kerr COUNTY SURVEYOR.
 REGISTERED LAND SURVEYOR NO. 238.

DEDICATION.

WE THE UNDERSIGNED JOSEPH D. LILLIE AND MARY E. LILLIE (HIS WIFE) DO HEREBY CERTIFY THAT WE ARE THE OWNERS OF THE LANDS DESCRIBED IN THE FOREGOING SURVEYORS CERTIFICATE, THAT WE HAVE CAUSED THE SAME TO BE SURVEYED AND PLATTED INTO LOTS AND A PUBLIC ROAD SUCH SUBDIVISION TO BE KNOWN AND DESIGNATED AS "LILLIE'S SECOND SUBDIVISION", THAT WE DO FOR OURSELVES, OUR HEIRS, ADMINISTRATORS, EXECUTORS AND ASSIGNS HEREBY GRANT AND DEDICATE THE ROADS AS SHOWN ON THE ACCOMPANYING PLAT TO THE PUBLIC USE AS SUCH FOREVER. IN TESTIMONY WHEREOF WE HAVE SET OUR HANDS AND SEALS THIS 1ST DAY OF AUGUST A.D. 1959.

George R. Kerr WITNESS.
John Daigneau WITNESS.

Joseph D. Lillie
 JOSEPH D. LILLIE
Mary E. Lillie
 MARY E. LILLIE

ACKNOWLEDGEMENT.

STATE OF MINNESOTA,
 COUNTY OF OLSTED, S. S.
 ON THIS 1ST DAY OF August A.D. 1959 BEFORE ME A NOTARY PUBLIC WITHIN AND FOR SAID COUNTY AND STATE PERSONALLY APPEARED JOSEPH D. LILLIE AND MARY E. LILLIE TO ME KNOWN TO BE THE PERSONS DESCRIBED IN AND WHO EXECUTED THE FOREGOING INSTRUMENT AND ACKNOWLEDGED THAT THEY EXECUTED THE SAME AS THEIR FREE ACT AND DEED.

George R. Kerr NOTARY PUBLIC, OLSTED COUNTY, MINNESOTA.
 MY COMMISSION EXPIRES MAY 1ST 1966.

STATE OF MINNESOTA,
 COUNTY OF OLSTED, S. S.
 I, ROSS BROWNING COUNTY AUDITOR IN AND FOR SAID COUNTY DO HEREBY CERTIFY THAT THE ATTACHED PLAT WAS DULY APPROVED BY THE BOARD OF COUNTY COMMISSIONERS AT A MEETING HELD ON THIS 1ST DAY OF August A.D. 1959. IN TESTIMONY WHEREOF I HAVE SIGNED MY NAME AND AFFIXED THE SEAL OF SAID COUNTY THIS 1ST DAY OF August A.D. 1959.

Ross Browning COUNTY AUDITOR.

TAXES PAID FOR THE YEAR OF 1957.

..... COUNTY TREASURER.

TAXES PAID AND TRANSFER ENTERED THIS 2ND DAY OF August A.D. 1959.

Ross Browning COUNTY AUDITOR.

STATE OF MINNESOTA,
 COUNTY OF OLSTED, S. S.
 FILED FOR RECORD THIS 2ND DAY OF August A.D. 1959 AT 3:20 O-CLOCK P.M.
 AND RECORDED IN BOOK OF PLATS PAGE

Harry H. Evans REGISTER OF DEEDS.
Levi Fortner Deputy