

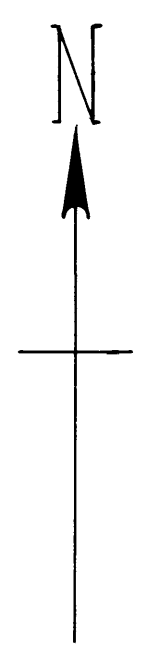
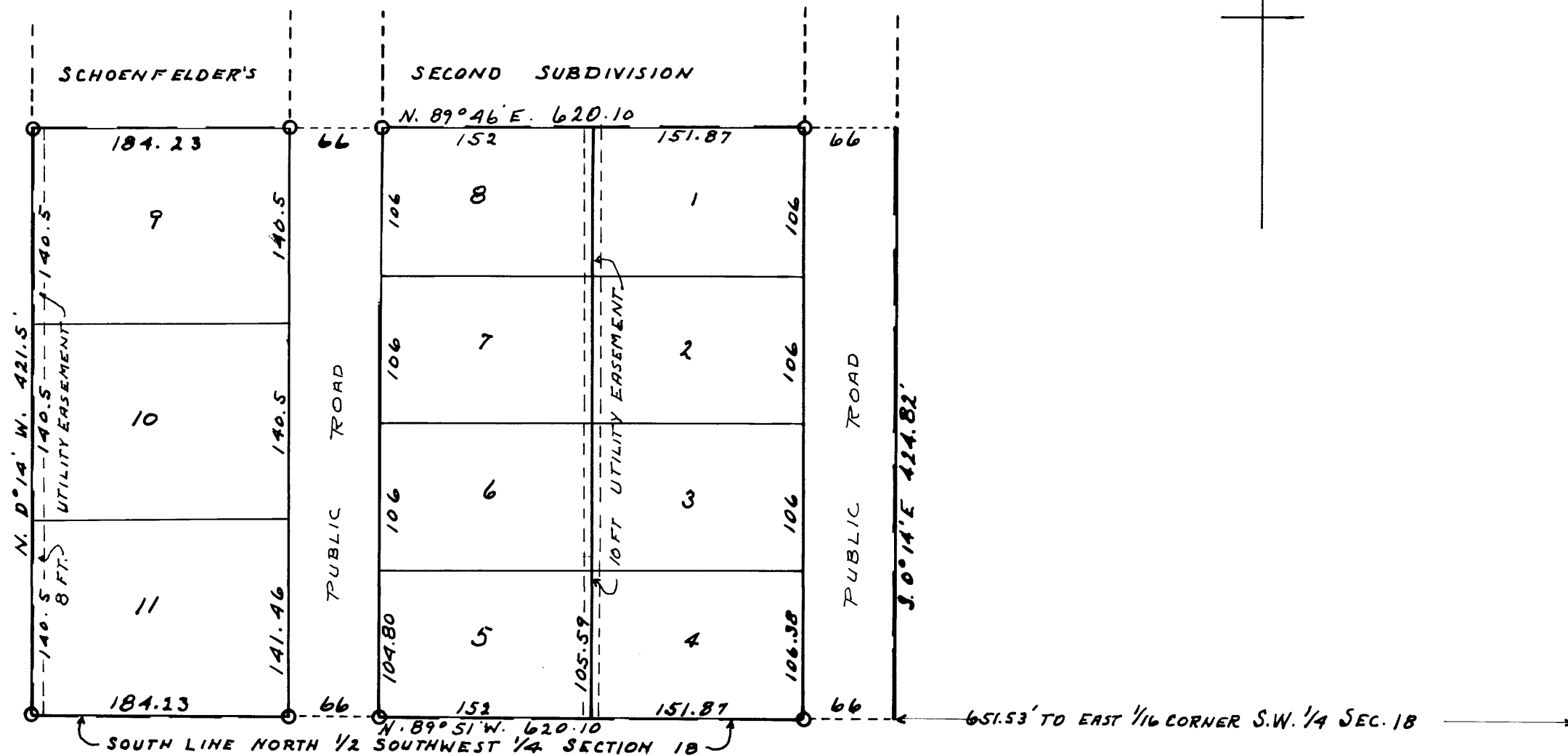


SCHOENFELDERS THIRD SUBDIVISION.

OLMSTED COUNTY, MINNESOTA.

MEASUREMENTS IN FEET AND DECIMALS.
 BOUNDARIES SHOWN THUS 
 MONUMENTS SHOWN THUS 
 SCALE 1 INCH = 100 FEET.
 1959.

John J. Kerr COUNTY SURVEYOR.
 REGISTERED LAND SURVEYOR NO. 238.



SURVEYORS CERTIFICATE.

STATE OF MINNESOTA,
 COUNTY OF OLSTED, S. S.
 I, JOHN J. KERR COUNTY SURVEYOR IN AND FOR SAID COUNTY DO HEREBY CERTIFY THAT AT THE REQUEST OF ROBERT SCHOENFELDER AND HELEN SCHOENFELDER (HIS WIFE) WILLIAM SCHOENFELDER AND MARY SCHOENFELDER (HIS WIFE) OWNERS OF THE FOLLOWING DESCRIBED LANDS TO-WIT: COMMENCING AT THE NORTHWEST CORNER OF THE SOUTHWEST 1/4 OF THE NORTHWEST 1/4 OF SECTION 18, TOWNSHIP 106, NORTH OF RANGE 13 WEST AND RUNNING THENCE SOUTH 31°51' EAST A DISTANCE OF 109.3 FEET, THENCE SOUTH A DISTANCE OF 129.74 FEET TO THE CENTER OF A TOWNSHIP ROAD, THENCE SOUTH 0°14' EAST A DISTANCE OF 1983.66 FEET TO THE SOUTHWEST CORNER OF LOT 15 SCHOENFELDER'S SECOND SUBDIVISION FOR A PLACE OF BEGINNING, THENCE NORTH 89°46' EAST A DISTANCE OF 620.10 FEET, THENCE SOUTH 0°14' EAST A DISTANCE OF 424.82 FEET, THENCE NORTH 89°51' WEST A DISTANCE OF 620.10 FEET, THENCE NORTH 0°14' WEST A DISTANCE OF 421.5 FEET TO THE PLACE OF BEGINNING, I HAVE SURVEYED AND PLATTED SAID LANDS INTO LOTS AND PUBLIC ROADS SUCH SUBDIVISION TO BE KNOWN AND DESIGNATED AS "SCHOENFELDER'S THIRD SUBDIVISION", I, FURTHER CERTIFY THAT THE ACCOMPANYING PLAT IS A TRUE REPRESENTATION OF SAID SURVEY AS MADE, THAT THE LENGTHS OF ALL LINES ARE SHOWN IN FEET AND DECIMALS OF A FOOT, THAT THE OUTSIDE BOUNDARIES ARE SHOWN, THAT MONUMENTS FOR THE GUIDANCE OF FUTURE SURVEYS HAVE BEEN PLACED IN THE GROUND AT THE LOCATIONS MARKED THUS O, THAT THE SAID LANDS HAVE NOT HERE-TO-FORE BEEN PLATTED, THAT THERE ARE NO WET LANDS THEREON, THAT ANGLES OF ENCLOSURE ARE SHOWN AND THAT LAND TIES ARE SHOWN ON SAID PLAT. DATED THIS 26th DAY OF JUNE 1959.

John J. Kerr COUNTY SURVEYOR.
 REGISTERED LAND SURVEYOR NO. 238.

DEDICATION.

WE THE UNDERSIGNED ROBERT SCHOENFELDER AND HELEN SCHOENFELDER (HIS WIFE) WILLIAM SCHOENFELDER AND MARY SCHOENFELDER (HIS WIFE) DO HEREBY CERTIFY THAT WE ARE THE OWNERS OF THE LANDS DESCRIBED IN THE FOREGOING SURVEYORS CERTIFICATE, THAT WE HAVE CAUSED THE SAME TO BE SURVEYED AND PLATTED INTO LOTS AND PUBLIC ROADS AND UTILITY EASEMENTS SUCH SUBDIVISION TO BE KNOWN AND DESIGNATED AS "SCHOENFELDER'S THIRD SUBDIVISION", THAT WE DO FOR OURSELVES, OUR HEIRS, EXECUTORS, ADMINISTRATORS AND ASSIGNS HEREBY GRANT AND DEDICATE THE PUBLIC ROADS AS SHOWN ON SAID PLAT TO THE USE OF THE PUBLIC AS SUCH FOREVER, AND WE ALSO GRANT AND DEDICATE THE SAID UTILITY EASEMENTS FOR THE CONSTRUCTION AND MAINTENANCE OF SUCH UTILITIES INCLUDING TRIMMING RIGHTS. IN TESTIMONY WHEREOF WE HAVE SET OUR HANDS AND SEALS THIS 1st DAY OF July 1959.

AK Cunningham WITNESS. *Robert Schoenfelder* ROBERT SCHOENFELDER.
Marion Altony WITNESS. *Helen S. Schoenfelder* HELEN SCHOENFELDER.
AK Cunningham WITNESS. *William Schoenfelder* WILLIAM SCHOENFELDER.
Marion Altony WITNESS. *Mary Schoenfelder* MARY SCHOENFELDER.

ACKNOWLEDGEMENT.

STATE OF MINNESOTA,
 COUNTY OF OLSTED, S. S.
 ON THIS 1st DAY OF July 1959 BEFORE ME A NOTARY PUBLIC WITHIN AND FOR SAID STATE AND COUNTY PERSONALLY APPEARED ROBERT SCHOENFELDER AND HELEN SCHOENFELDER (HIS WIFE) WILLIAM SCHOENFELDER AND MARY SCHOENFELDER (HIS WIFE) TO ME KNOWN TO BE THE PERSONS DESCRIBED IN AND WHO EXECUTED THE FOREGOING INSTRUMENT AND ACKNOWLEDGED THAT THEY EXECUTED THE SAME AS THEIR FREE ACT AND DEED.

AK Cunningham NOTARY PUBLIC, OLSTED COUNTY, MINNESOTA.
 MY COMMISSION EXPIRES October 7 1961.

APPROVED AS TO WATER SUPPLY AND SEWAGE DISPOSAL
 THIS 2nd DAY OF July 1959.

BY *Viktor Al Wilson, M.D.* HEALTH OFFICER.
 ROCHESTER OLSTED COUNTY HEALTH UNIT.

APPROVED THIS 2nd DAY OF July A.D. 1959
 BOARD OF SUPERVISORS MARION TOWNSHIP, OLSTED COUNTY,
 MINNESOTA., (APPROVED UNDER 1945 M.S.A. 349.12 AND
 OVERRULING THE OLSTED COUNTY PLANNING COMMISSION).

Paul Rubin CHAIRMAN.
Wm O mill SUPERVISOR.
Robert Schoenfelder SUPERVISOR.

STATE OF MINNESOTA,
 COUNTY OF OLSTED, S. S.
 I, ROSS BROWNING COUNTY AUDITOR IN AND FOR SAID COUNTY DO HEREBY CERTIFY THAT THE ATTACHED PLAT WAS DULY APPROVED BY THE BOARD OF COUNTY COMMISSIONERS AT A MEETING HELD ON THIS 12th DAY OF July 1959. IN TESTIMONY WHEREOF I HAVE SIGNED MY NAME AND AFFIXED THE SEAL OF SAID COUNTY THIS 13th DAY OF July A.D. 1959.

Ross Browning COUNTY AUDITOR.

TAXES PAID FOR THE YEAR OF 1958.

Karl H. Petter COUNTY TREASURER.

TAXES PAID AND TRANSFER ENTERED THIS 13th DAY OF July A.D. 1959.

Ross Browning COUNTY AUDITOR.

STATE OF MINNESOTA,
 COUNTY OF OLSTED, S. S.
 FILED FOR RECORD THIS 20th DAY OF July A.D. 1959 AT 10:00-CLOCK A.M. AND RECORDED
 IN BOOK OF PLATS PAGE 100.

Wm J. Schmitt REGISTER OF DEEDS.