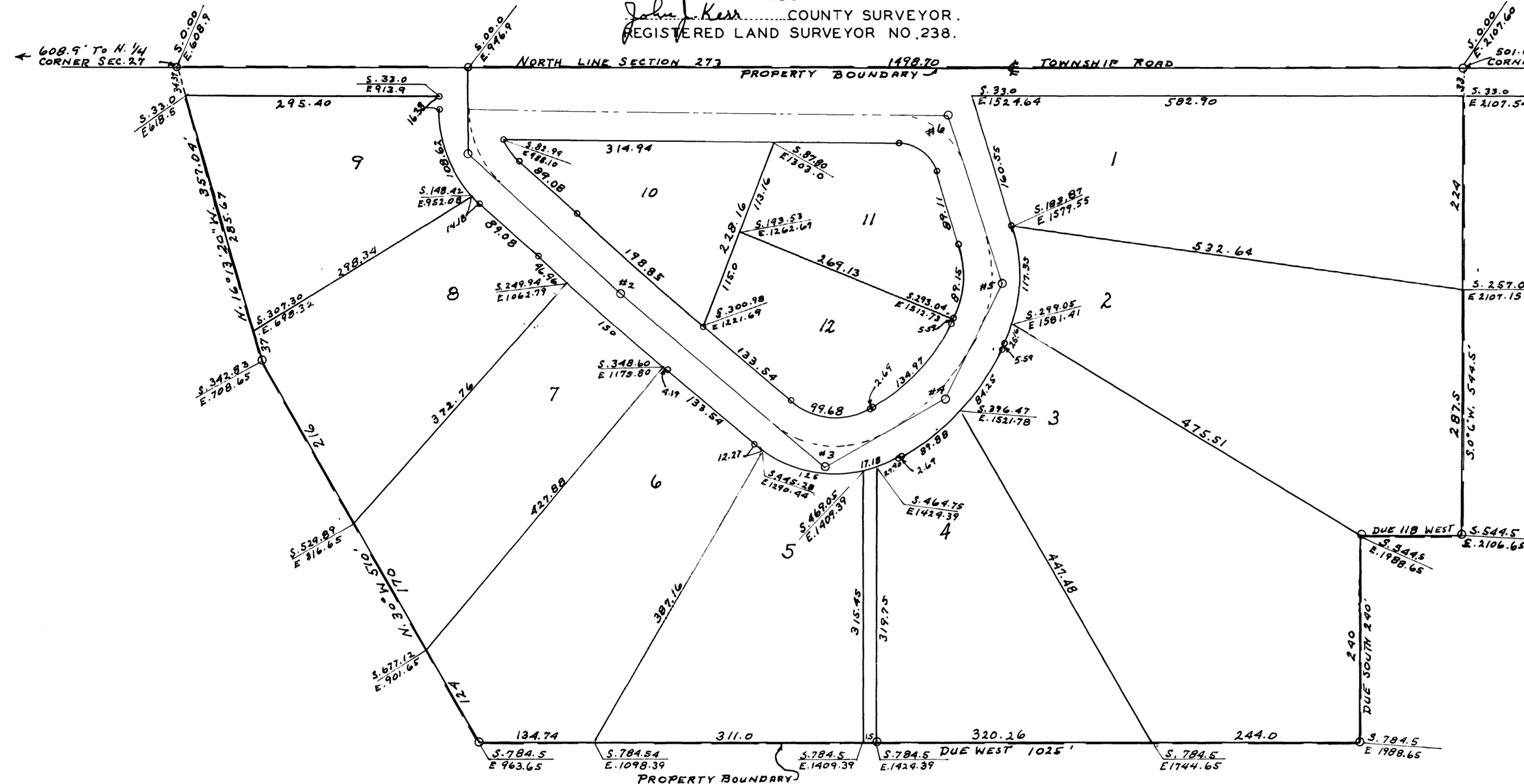
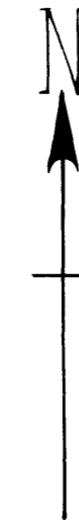


WINDSOR CHASE FIRST SUBDIVISION. OLMSTED COUNTY, MINNESOTA.

MONUMENTS SHOWN THUS ○
MEASUREMENTS IN FEET AND DECIMALS.
SCALE 1 INCH = 100 FEET.
1959.

John J. Kerr COUNTY SURVEYOR.
REGISTERED LAND SURVEYOR NO. 238.



SURVEYORS CERTIFICATE.

STATE OF MINNESOTA,
COUNTY OF OLMSTED, S. S.
I, JOHN J. KERR COUNTY SURVEYOR IN AND FOR SAID COUNTY DO HEREBY CERTIFY THAT AT THE REQUEST OF ALBERT A. MESSENBURG AND MOLLY MESSENBURG (HIS WIFE) AND THE FEDERAL LAND BANK OF SAINT PAUL (MORTGAGEE) OWNERS OF THE FOLLOWING DESCRIBED LANDS TO-WIT: ASSUMING THE NORTH LINE OF THE NORTHEAST 1/4 OF SECTION 27, TOWNSHIP 106, NORTH OF RANGE 14 WEST TO BE A DUE EAST AND WEST LINE AND COMMENCING AT THE NORTHWEST CORNER OF THE NORTHEAST 1/4 OF SAID SECTION AND RUNNING THENCE DUE EAST A DISTANCE OF 608.9 FEET FOR A PLACE OF BEGINNING, THENCE DUE EAST ALONG THE NORTH LINE OF SAID NORTHEAST 1/4 A DISTANCE OF 1498.70 FEET TO A POINT WHICH IS 501.6 FEET WEST OF THE NORTHEAST CORNER OF SAID SECTION, THENCE SOUTH 0° 6' WEST A DISTANCE OF 544.5 FEET, THENCE DUE WEST A DISTANCE OF 118.00 FEET, THENCE DUE SOUTH A DISTANCE OF 240.00 FEET, THENCE DUE WEST A DISTANCE OF 1025.00 FEET, THENCE NORTH 30° WEST A DISTANCE OF 510.00 FEET, THENCE NORTH 16° 13' 20" WEST A DISTANCE OF 357.04 FEET TO THE PLACE OF BEGINNING, I HAVE SURVEYED AND PLATTED SAID LANDS INTO LOTS AND PUBLIC ROADS SUCH SUBDIVISION TO BE KNOWN AND DESIGNATED AS "WINDSOR CHASE FIRST SUBDIVISION", I FURTHER CERTIFY THAT THE ACCOMPANYING PLAT IS A TRUE REPRESENTATION OF SAID SURVEY AS MADE, THAT THE LENGTHS OF ALL LINES ARE SHOWN IN FEET AND DECIMALS OF A FOOT, THAT MONUMENTS FOR THE GUIDANCE OF FUTURE SURVEYS HAVE BEEN PLACED IN THE GROUND AT THE LOCATIONS MARKED THUS ○, THAT SAID LANDS HAVE NOT HERETOFORE BEEN PLATTED, THAT THERE ARE NO WET LANDS THEREON, THAT OUTSIDE BOUNDARIES ARE SHOWN AND DESIGNATED, THAT ANGLES OF ENCLOSURE ARE SHOWN AND THAT LAND TIES TO THE SECTION CORNERS ARE SHOWN.
DATED THIS 2nd DAY OF July, A.D. 1959.

John J. Kerr COUNTY SURVEYOR.
REGISTERED LAND SURVEYOR NO. 238.

DEDICATION.

WE THE UNDERSIGNED ALBERT A. MESSENBURG AND MOLLY MESSENBURG (HIS WIFE) AND THE FEDERAL LAND BANK OF SAINT PAUL DO HEREBY CERTIFY THAT WE ARE RESPECTIVELY THE OWNERS AND MORTGAGEE OF THE LANDS DESCRIBED IN THE FOREGOING SURVEYORS CERTIFICATE, THAT WE HAVE CAUSED THE SAME TO BE SURVEYED AND PLATTED INTO LOTS AND PUBLIC ROADS SUCH SUBDIVISION TO BE KNOWN AND DESIGNATED AS "WINDSOR CHASE FIRST SUBDIVISION", THAT WE DO FOR OURSELVES, OUR HEIRS, EXECUTORS, ADMINISTRATORS AND ASSIGNS HEREBY GRANT AND DEDICATE THE PUBLIC ROADS AS SHOWN ON THE ACCOMPANYING PLAT TO THE PUBLIC USE AS SUCH FOREVER. IN TESTIMONY WHEREOF WE HAVE SET OUR HANDS AND SEALS THIS 6th DAY OF July, A.D. 1959.
IN THE PRESENCE OF:

Witness

THE FEDERAL LAND BANK OF SAINT PAUL.

Witness

Witness

VICE PRESIDENT

Witness

ASSISTANT SECRETARY

ACKNOWLEDGEMENT.

STATE OF MINNESOTA,
COUNTY OF OLMSTED, S. S.
ON THIS 6th DAY OF July, A.D. 1959 BEFORE ME A NOTARY PUBLIC WITHIN AND FOR SAID STATE AND COUNTY PERSONALLY APPEARED ALBERT A. MESSENBURG AND MOLLY MESSENBURG (HIS WIFE) TO ME KNOWN TO BE THE PERSONS DESCRIBED IN AND WHO EXECUTED THE FOREGOING INSTRUMENT AND ACKNOWLEDGED THAT THEY EXECUTED THE SAME AS THEIR FREE ACT AND DEED.

Notary Public, Olmsted County, Minnesota.
MY COMMISSION EXPIRES 1966.

CORPORATE ACKNOWLEDGEMENT.

STATE OF MINNESOTA,
COUNTY OF RAMSEY, S. S.
ON THIS 14th DAY OF July, A.D. 1959 BEFORE ME A NOTARY PUBLIC PERSONALLY APPEARED ALBERT A. MESSENBURG AND MOLLY MESSENBURG (HIS WIFE) TO ME PERSONALLY KNOWN TO BE OFFICERS TO-WIT, VICE PRESIDENT AND ASSISTANT SECRETARY, RESPECTIVELY, OF THE FEDERAL LAND BANK OF SAINT PAUL, A CORPORATION, AND TO ME PERSONALLY TO BE THE PERSONS WHO EXECUTED THE WITHIN AND FOREGOING INSTRUMENT IN BEHALF OF SAID CORPORATION AS SUCH, WHO BEING EACH BY ME DULY SWORN DID EACH FOR HIMSELF SAY, THAT THEY ARE SUCH OFFICERS OF SAID CORPORATION DESCRIBED IN AND WHICH EXECUTED THE WITHIN AND FOREGOING INSTRUMENT, THAT THE SEAL AFFIXED TO THE WITHIN AND FOREGOING INSTRUMENT IS THE CORPORATE SEAL OF SAID CORPORATION AND THAT SAID INSTRUMENT WAS EXECUTED IN BEHALF OF SAID CORPORATION BY AUTHORITY OF ITS BOARD OF DIRECTORS AND SAID OFFICERS ACKNOWLEDGED SAID INSTRUMENT TO BE THE FREE ACT AND DEED OF SAID CORPORATION AND FURTHER ACKNOWLEDGED TO ME THAT SAID CORPORATION EXECUTED THE SAME.

Notary Public, Ramsey County, Minnesota.
MY COMMISSION EXPIRES 1962.

STATE OF MINNESOTA,
COUNTY OF OLMSTED, S. S.
I, ROSS BROWNING COUNTY AUDITOR IN AND FOR SAID COUNTY DO HEREBY CERTIFY THAT THE PLAT ATTACHED WAS DULY APPROVED BY THE BOARD OF COUNTY COMMISSIONERS AT A MEETING HELD ON THIS 3rd DAY OF August, 1959. IN TESTIMONY WHEREOF I HAVE SIGNED MY NAME AND AFFIXED THE SEAL OF SAID COUNTY THIS 3rd DAY OF August, A.D. 1959.

County Auditor.

TAXES PAID FOR THE YEAR OF 1952.

County Treasurer.

TAXES PAID AND TRANSFER ENTERED THIS 4th DAY OF August, A.D. 1959.

County Auditor.

STATE OF MINNESOTA,
COUNTY OF OLMSTED, S. S.
FILED FOR RECORD THIS 4th DAY OF August, A.D. 1959 AT 2 O'CLOCK P.M.
AND RECORDED IN BOOK OF PLATS PAGE

Register of Deeds.

APPROVED AS TO WATER SUPPLY AND SEWAGE DISPOSAL
THIS 2nd DAY OF July, 1959.

By Victor Wilson, M.D. HEALTH OFFICER.
ROCHESTER, OLSTED COUNTY, HEALTH UNIT.

APPROVED THIS 2nd DAY OF July, 1959
OLMSTED COUNTY PLANNING COMMISSION.

By Chas. J. Radtke CHAIRMAN.

APPROVED THIS 4th DAY OF August, 1959.
BOARD OF SUPERVISORS, ROCHESTER TOWNSHIP.

Robert Bergelson CHAIRMAN.

Alvin H. ... SUPERVISOR.

Chas. J. Radtke SUPERVISOR.

CURVE NO.	DELTA ANGLE	DEGREE	RADIUS	TANGENT LENGTH	P.I.	COORDINATE LOCATION
1	47° 40'	50°	114.59	50.62	95.33	S. 100.00 E. 946.90
2	2°	1°	5729.58	100.00	200.0	S. 261.42 E. 1124.10
3	70°	50°	114.59	80.23	140.0	S. 464.50 E. 1363.28
4	34°	22°	260.44	79.62	154.55	S. 384.05 E. 1504.51
5	46° 20'	40°	143.24	61.29	115.83	S. 252.75 E. 1569.50
6	69° 7' 30"	70°	81.85	56.39	98.75	S. 58.43 E. 1498.77

SURVEYORS NOTE:
THE NORTH LINE OF THE NORTHEAST 1/4 OF SECTION 27 IS ASSUMED TO BE A DUE EAST AND WEST LINE.
THE COORDINATE DISTANCES ARE MEASURED FROM THE NORTH 1/4 CORNER WHICH IS ASSIGNED COORDINATE SOUTH 0.00 AND EAST 0.00, ALL POINTS IN THIS PLAT BEING SOUTH AND EAST OF SAID 1/4 CORNER.
ALL P.I.'S OF CURVES ARE PLACED 1/2 INCH STEEL RODS.
THE P.C. AND P.T. OF CURVES ARE PLACED AT THE PROPERTY LINES.