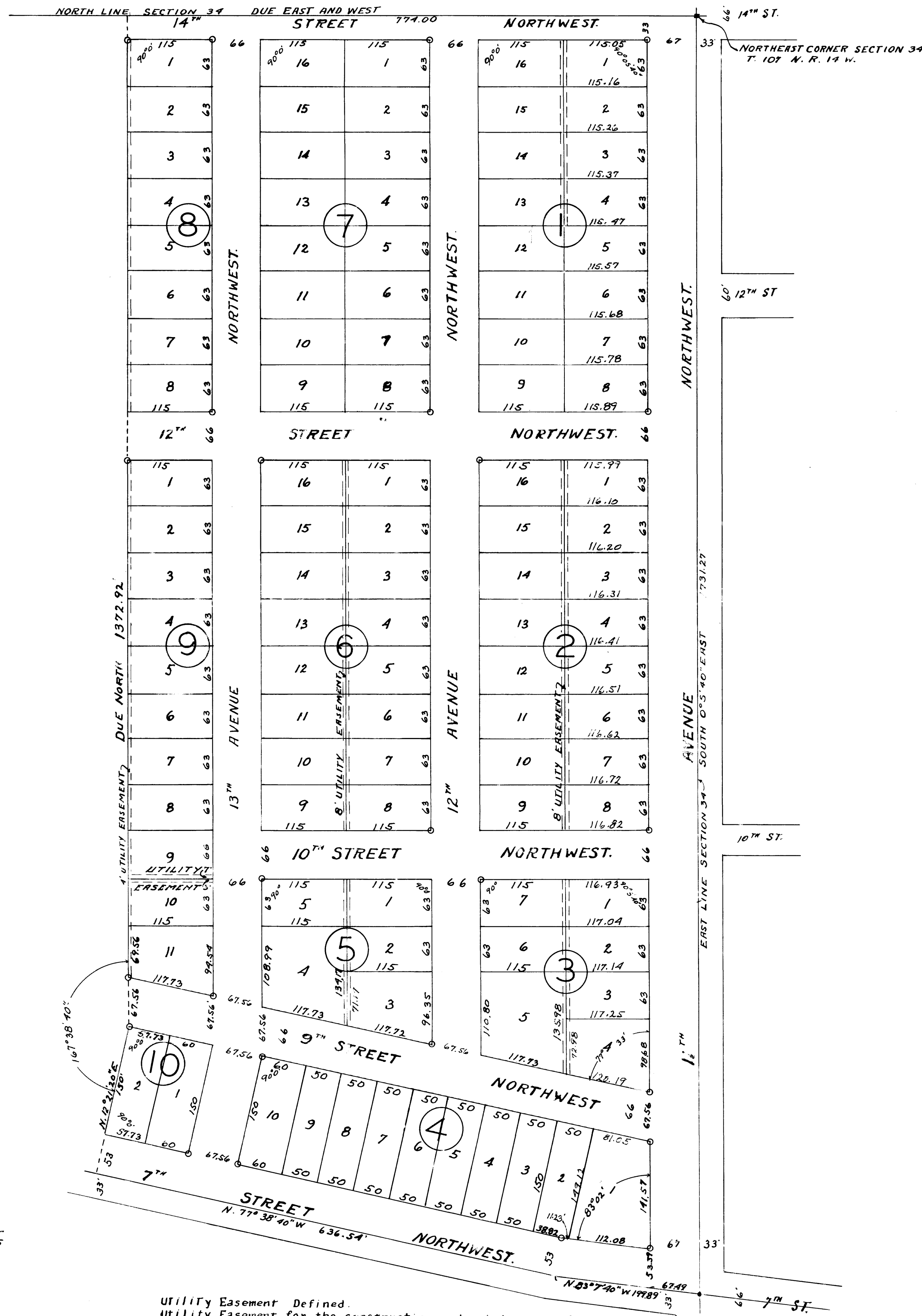


# GOODING'S ADDITION.

ROCHESTER, MINNESOTA.

SCALE 1" = 100'

John J. Kerr COUNTY SURVEYOR.  
REGISTERED LAND SURVEYOR NO. 238.



## SURVEYOR'S CERTIFICATE.

I, John J. Kerr, County Surveyor do hereby certify that at the request of Frances G. Twyeffort and Louis V. Twyeffort (her husband), I have surveyed and platted into Streets and Avenues, Lots and blocks as shown upon the accompanying plat the following described lands; Commencing at the northeast corner of Section 34 Township 107 north of range 14 west for a place of beginning and running thence south 5' 40" east along the east line of said section a distance of 1731.27 feet to the center of Seventh Street Northwest as now located, Thence north 83° 40' west along the center line of said seventh Street if projected 199.89 feet, Thence North 77° 38' 40" west 636.57 feet, Thence North 12° 21' 20" East 203.00 feet, Thence due north 1372.92 feet to the north line of said section, Thence due east along the north line of said section 774.0 feet to the place of beginning, Said subdivision to be known and designated as "GOODING'S ADDITION"

I further certify that the accompanying plat is a true and correct representation of said survey as made, That all distances are shown in feet and decimals of a foot, That Monuments for the guidance of future surveys have been placed in the ground at the locations marked thus That the outside boundaries are correctly shown, That there are no wet lands thereon, That said lands has not here-to-fore been subdivided or platted.

Dated this 29th day of September, A.D. 1952.

John J. Kerr County Surveyor.  
Registered Land Surveyor No. 238.

We, The undersigned Frances G. Twyeffort and Louis V. Twyeffort (her husband) do hereby certify That we are the owners of the lands described in the foregoing surveyors certificate, That we have caused the same to be surveyed and platted into Streets and Avenues, Lots and Blocks and Utility easements under the name of "GOODING'S ADDITION" as shown by the accompanying plat and We do for Ourselves, Our Heirs, Executors, Administrators and Assigns hereby grant and dedicate to the public the Streets and Avenues shown thereon to the use as such forever, and we also hereby grant Utility easements as shown on said plat and defined thereon.

Witness  
Frances G. Twyeffort

Witness  
Louis V. Twyeffort

State of Connecticut,  
County of Fairfield, S.S.

On this 29th Day of September, A.D. 1952, Before me a Notary Public within and for the State of Connecticut and County of Fairfield, Personally appeared Frances G. Twyeffort and Louis V. Twyeffort to me known to be the persons who executed the foregoing instrument and acknowledged that they executed the same as their free act and deed. Subscribed and sworn to before me this 29th Day of September, A.D. 1952.

Notary Public, Fairfield County, Connecticut.  
My Commission expires 1952.

State of Minnesota,  
County of Olmsted,  
City of Rochester, S.S.

I, F. R. Finch City Clerk in and for said City do hereby certify that the accompanying plat was duly approved by the Common Council of the City of Rochester, in testimony whereof I have here-un-to set my hand and affixed the seal of said City this 29th Day of September, A.D. 1952.

F. R. Finch City Clerk.

Taxes paid for the year 1951.

County Treasurer.

Taxes paid and transfer entered this 29th Day of September, 1952.

County Auditor.

State of Minnesota,  
County of Olmsted, S.S.

I, Tom Moore Register of Deeds in and for said County do hereby certify that the foregoing plat and instrument were filed in this office on this 29th day of September, 1952 at 10:00 O-Clock P.M. and were duly filed in Book of plats Page 100.

Register of Deeds.

Approved by:  
ROCHESTER PUBLIC UTILITY DEPT.  
GENERAL MANAGER OF UTILITIES

Utility Easement Defined.  
Utility Easement for the construction and maintenance of electric power and telephone lines and trimming rights as necessary for said maintenance.